

SafeTruck

by  MS. CARITA

HEAVY HAUL
HEADQUARTERS

2018 CATALOG

Quality Leader of Transportation Safety Products.

WHO WE ARE i
OSL CONTEST WINNERS i

SAFETY FLAGS
SAFETY FLAGS 1-8
FLAG ACCESSORIES 9-10

OD SIGNS AND BANNERS
OD BANNERS (GROMMET / BUNGEE) 11-12
OD REFLECTIVE BANNERS AND MAGNETIC SIGNS 13
OD ALUMINUM SIGNS 14
OD WOOD SIGNS 15
OD VINYL DECALS AND SPECIALTY BANNERS 16

SAFETY PRODUCTS
FOXFIRE LIGHTS / PERSONAL SAFETY LIGHT / SAFETY LIGHTS 17-21
TURN SIGNAL LIGHTS 22
CONES / CONE COLLARS / CONE LED LIGHTS 23
CONSTRUCTION SAFETY SIGNS & STANDS 24
LED FLASHLIGHTS / MULTI-COLOR BATON / TRIPLE BURST STROBES 25
SLOW-MOVING VEHICLE EMBLEMS / VEHICLE CONSPICUITY TAPE / BUMPER GUIDES .. 26
PERSONAL SAFETY (VESTS • HARD HATS • WINTER LINER • LIGHTS • GLOVES) 27-32
TRAFFIC PADDLES (STOP/STOP & STOP/SLOW) 33
TAILGATE LIGHT BAR / SEAT BELT COVERS / FIRST AID KIT 34

DECALS AND PLACARDS
DECALS 35-37
D.O.T. HAZARDOUS DECAL PLACARDS 38
FLIP PLACARDS 39-40

TRUCK PRODUCTS
EZ FLIP STICK 41
27' MEASUREMENT POLE 42
GOOD-N-TIGHT RATCHET TIGHTENING HANDLE 43
RATCHET WRENCH / TANDEM AXLE STOP 44
EZ STEPPER TIRE LADDER / PIN PULLERS 45
PALLET JACKSTOP 46
MIRROR MITTS / WORKPADDS™ 47
TARP STRAPS / CARGO STRAPS / NEW YORK STATE MAGNET, DECAL AND PATCH ... 48
WHEEL CHOCKS / DOCK BUMPERS 49
SKP REPAIR TAPE 50

OUT OF SERVICE PRODUCTS
ABSOLUTE BRAKE LOCKOUTS 50
OUT OF SERVICE STEERING WHEEL COVERS 51
OUT OF SERVICE WARNING FLAG / LABEL / CARGO SEALS 52

ACCESSORIES
MIC KEEPERS / BATTERIES 53
LOG BOOKS / INSPECTION FORMS 54

RETAIL DISPLAYS 55-56

INTRO PACK & ROADSIGN MESSAGE INDEX 57

STATE REQUIREMENTS INDEX 58

PRODUCT INDEX 59-60

The **WIDE LOAD** *Sign Continues*



Our founder Merritt Mosby and Carita Mosby
Rest in Peace Merritt Mosby
April 27, 1933 - April 25, 2016

For more than 40 years, SafeTruck by Ms. Carita has been the leader in quality Oversize Load products including signs, banners, and flags. We have the widest variety of OSL products with the best quality of any nationally distributed line in the market today, as well as more than 600 safety products for the professional trucker.

We are dedicated to continuing the legacy and vision of Merritt Mosby, Founder of SafeTruck by Ms. Carita, who passed away in April 2016.

Thank you for your support and loyalty to our brand. Merritt's legacy will live on through his sons and the leadership of this company. We will continue to bring you products that are bigger, stronger, and safer.



Gordon Mosby, Vice President (left)
Michael Mosby, President/CEO (right)

CONTEST WINNERS



NOVEMBER 2016
Jason Hill
Tracy, California



DECEMBER 2016
James Adcock
Corn, Oklahoma



JANUARY 2017
Dennis Miller
Sacramento, California



FEBRUARY 2017
Frank Sanchez
Oklahoma



MARCH 2017
Ed Petrosyan
Sunland, California



APRIL 2017
Corey Cahoon
Grantsboro, NC



MAY 2017
Art Gale
Caldwell, Idaho



JUNE 2017
Freddy Martinez
Utopia, Texas



JULY 2017
Payton Trahan
Cut Off, Louisiana



AUGUST 2017
John Miller
Chinook, Montana



SEPTEMBER 2017
Frank Leady
San Angelo, Texas



OCTOBER 2017
Stanley Jones
Hillsborough, North Carolina

THE EZ MOUNT FLAG ASSEMBLY KIT

NOW WITH DOUBLE STITCHING

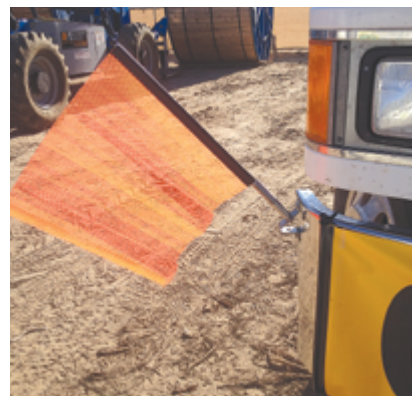
EZ-MOUNT FLAG ASSEMBLY KIT

The EZ-Mount Flag Assembly Kit is machined from stainless steel with a solid aluminum rod and features a stainless steel spring receiver. Allows for quick connect and disconnect to the EZ-Mount Bracket.

Improvements:

- Kit contains all parts needed for installation
- Jersey flag sewn directly to welting
- Stainless steel bracket
- Provides a 45° or 90° angle for mounting the flag assembly
- Welting allows for free rotation of flag on the staff
- Stainless steel spring receiver for fast connect/disconnect
- No need for bungees or clamps
- Mounting hardware included

P/N: FZK300C RED FLAG ASSEMBLY
P/N: FZK700C ORANGE FLAG ASSEMBLY



**APPROVED
HEAVY HAUL
HEADQUARTERS**

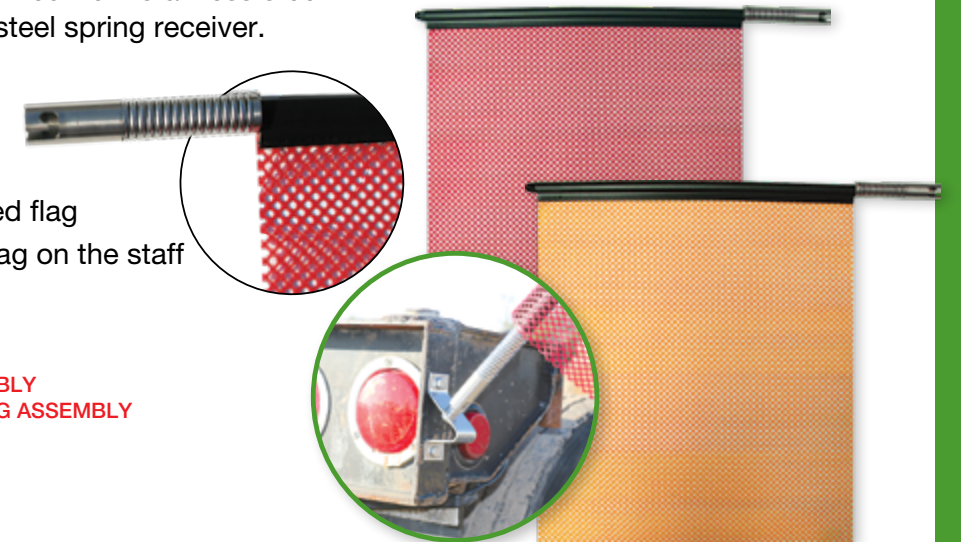


EZ-MOUNT FLAG ASSEMBLY

The EZ-Mount Flag Assembly is machined from stainless steel with a solid aluminum rod and a stainless steel spring receiver.

- Jersey flag sewn directly to welting
- Stainless steel bracket
- Provides a 45° or 90° angle mounted flag
- Welting allows for free rotation of flag on the staff
- Stainless steel spring receiver for fast connect/disconnect

P/N: FZA300C - 18" RED FLAG ASSEMBLY
P/N: FZA700C - 18" FLO-ORANGE FLAG ASSEMBLY

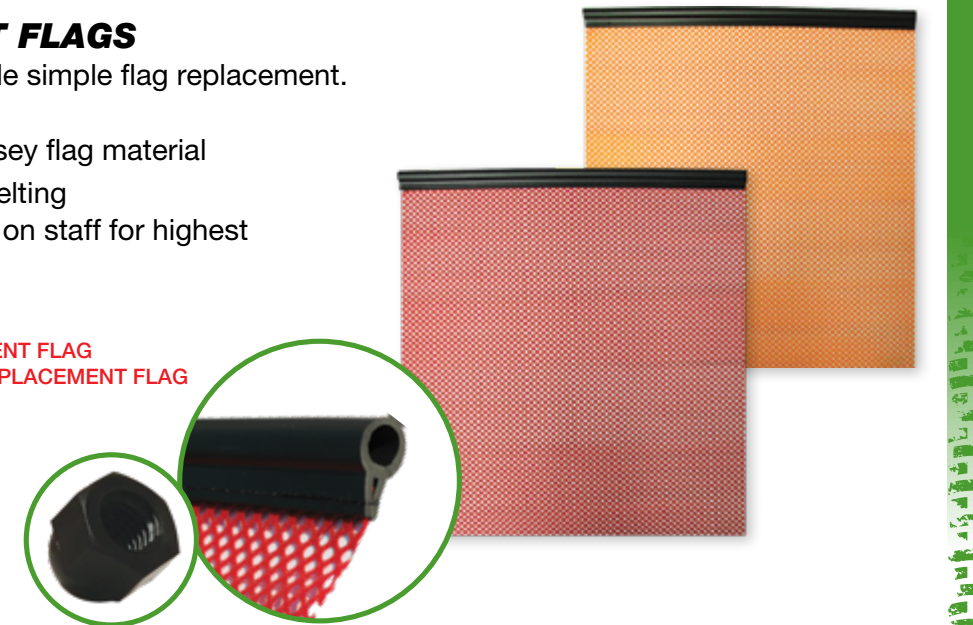


EZ-MOUNT REPLACEMENT FLAGS

EZ-Mount Replacement Flags provide simple flag replacement.

- Available in Red or Flo-Orange jersey flag material
- Jersey Material sewn directly to welting
- Welting allows flag to rotate freely on staff for highest visibility and easy replacement
- Replacement nut included

P/N: FZR300C - 18" RED REPLACEMENT FLAG
P/N: FZR700C - 18" FLO-ORANGE REPLACEMENT FLAG



EZ-MOUNT BRACKET

The EZ-Mount Bracket is a stainless steel bracket that mounts to the truck or trailer.

- Stainless steel bracket
- Provides a 45° or 90° surface for the 5/8" stainless steel EZ-Mount stud
- Mounting hardware included

P/N: FZB101 - BRACKET



STAFF FLAGS

All staff flags have sewn pockets with a 3/4" x 30" wood dowel. Four sizes, two colors, and four different materials to choose from. Each flag is double-stitched with a reinforced hem. Unbreakable plastic staffs are also available (see page 8).



3/4" diameter dowel. Attaches with our Flag Bracket Pipe or Flag Bracket Clamp (see page 9).

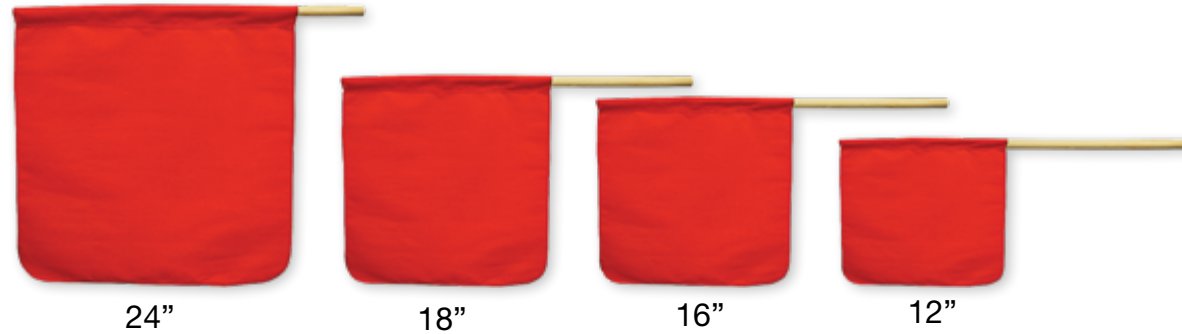
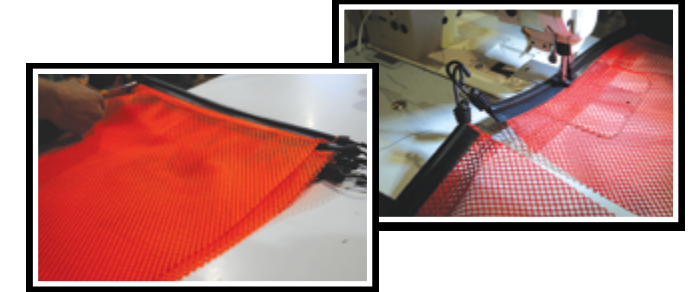
2" Vinyl-coated, heavy gauge steel hooks. Protective coating resists corrosion and won't mar paint.

BUNGEE FLAGS

These 18" flags are great for most applications, with built-in Heavy Duty 3/8" Bungee Cord and flexible welting. Available in Red and Flo-Orange. Each flag is double-stitched with a reinforced hem. Choose from four fabrics, including our most popular Jersey Knit.



Kyle Nelson • Tennessee Gas Pipeline



SOLID

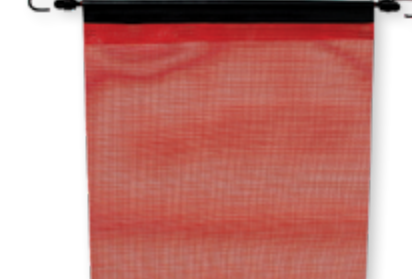
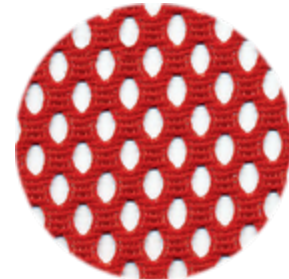
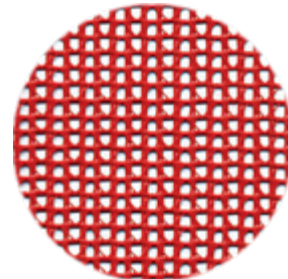
MESH

JERSEY

SOLID

MESH

JERSEY



Red Cotton

Heavy 7-oz Poly/Cotton Twill
Not recommended for highway use.

Red Mesh

Vinyl-Coated Polyester

Red Jersey

Fray-Resistant Knit Polyester
great for highway use.
Our best flag!

Red Cotton

Heavy 7-oz Poly/Cotton Twill, Not recommended for highway use.

Red Mesh

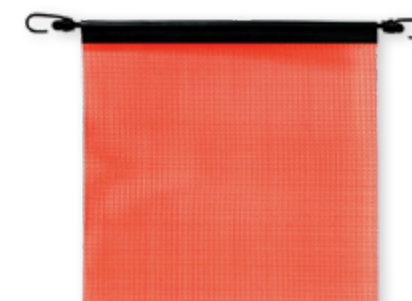
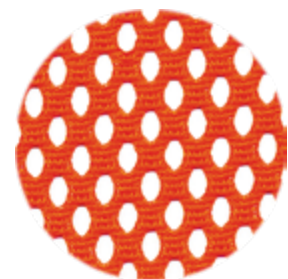
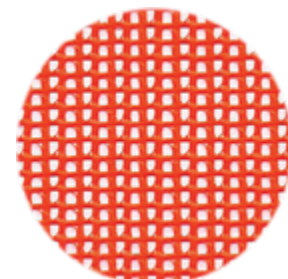
Vinyl-Coated Polyester

Red Jersey

Fray-Resistant Knit Polyester
Great for highway use.
Our best flag!

P/N	SIZE	P/N	SIZE	P/N	SIZE
FS200A	12" x 12"	FS400AR	12" x 12"	FS300A	12" x 12"
FS200B	16" x 16"	FS400BR	16" x 16"	FS300B	16" x 16"
FS200C	18" x 18"	FS400CR	18" x 18"	FS300C	18" x 18"
FS200D	24" x 24"	FS400DR	24" x 24"	FS300C-R	18" x 18" <small>RETAIL READY PACKAGING</small>
				FS300D	24" x 24"

P/N	SIZE	P/N	SIZE	P/N	SIZE
FB200C	18" x 18"	FB400CR	18" x 18"	FB300C	18" x 18"
				FB300C-R	18" x 18" <small>RETAIL READY PACKAGING</small>



Flo-Orange Poly

High Visibility Knit Polyester
Not recommended for highway use.

Flo-Orange Mesh

Fluorescent Vinyl-Coated Polyester

Flo-Orange Jersey

High Visibility Knit Polyester, Fray Resistant, Great for highway use.

Flo-Orange Poly
High Visibility Knit Polyester, Not recommended for highway use.

Flo-Orange Mesh
Fluorescent Vinyl-Coated Polyester

Flo-Orange Jersey
High Visibility Knit Polyester, Fray Resistant, Great for highway use.

P/N	SIZE	P/N	SIZE	P/N	SIZE
FS500A	12" x 12"	FS400A	12" x 12"	FS700A	12" x 12"
FS500B	16" x 16"	FS400B	16" x 16"	FS700B	16" x 16"
FS500C	18" x 18"	FS400C	18" x 18"	FS700C	18" x 18"
FS500D	24" x 24"	FS400D	24" x 24"	FS700C-R	18" x 18" <small>RETAIL READY PACKAGING</small>
				FS700D	24" x 24"

P/N	SIZE	P/N	SIZE	P/N	SIZE
FB500C	18" x 18"	FB400C	18" x 18"	FB700C	18" x 18"
				FB700C-R	18" x 18" <small>RETAIL READY PACKAGING</small>

Grommet flags are versatile enough to attach to a load with bungees, rope or Flag-Mags.

GROMMET FLAGS

Grommet flags are double-stitched, with a reinforced hem and two large #5 toothed grommets. Choose from poly/cotton twill, mesh, polyester and jersey knit. Depending on your state requirements, flags are available in 12", 16", 18", and 24" Red and Flo-Orange.

Great for attaching to machinery or trailers with our top selling Flag-Mags.

WIRE LOOP FLAGS

All wire flags have heavy 10-gauge steel wire with 1/2" loops. 16" and 18" flags have plastic sleeves over wire to protect the shoulder of the flag. Each flag is double-stitched with reinforced hem. Attaches with our Flag-Mag or Flag Straps (see page 7 & 10).

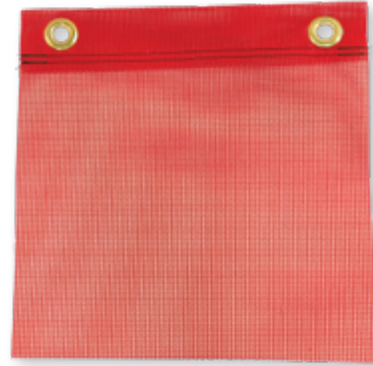
SOLID



Red Cotton

Heavy 7-oz Poly/Cotton Twill
Not recommended for highway use.

MESH



Red Mesh

Vinyl-Coated Polyester

JERSEY



Red Jersey

Fray-Resistant Knit Polyester
Great for highway use.
Our best flag!

SOLID



Red Cotton

Heavy 7-oz Poly/Cotton Twill
Not recommended for highway use.

MESH



Red Mesh

Vinyl-Coated Polyester

JERSEY



Red Jersey

Fray-Resistant Knit Polyester
Great for highway use.
Our best flag!

P/N	SIZE
FG200A	12" x 12"
FG200B	16" x 16"
FG200C	18" x 18"
FG200D	24" x 24"

P/N	SIZE
FG400AR	12" x 12"
FG400BR	16" x 16"
FG400CR	18" x 18"
FG400DR	24" x 24"

P/N	SIZE
FG300A	12" x 12"
FG300B	16" x 16"
FG300C	18" x 18"
FG300C-R	18" x 18" <small>RETAIL READY PACKAGING</small>
FG300D	24" x 24"

P/N	SIZE
FW200A	12" x 12"
FW200B	16" x 16"
FW200C	18" x 18"

P/N	SIZE
FW400AR	12" x 12"
FW400BR	16" x 16"
FW400CR	18" x 18"

P/N	SIZE
FW300A	12" x 12"
FW300B	16" x 16"
FW300C	18" x 18"
FW300C-R	18" x 18" <small>RETAIL READY PACKAGING</small>



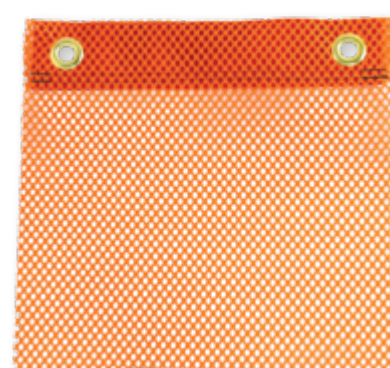
Flo-Orange Poly

High Visibility Knit Polyester
Not recommended for highway use.



Flo-Orange Mesh

Fluorescent Vinyl-Coated Polyester



Flo-Orange Jersey

High Visibility Knit Polyester,
Fray Resistant,
Great for highway use.



Flo-Orange Poly

High Visibility Knit Polyester
Not recommended for highway use.



Flo-Orange Mesh

Fluorescent Vinyl-Coated Polyester



Flo-Orange Jersey

High Visibility Knit Polyester,
Fray Resistant,
Great for highway use.

P/N	SIZE
FG500A	12" x 12"
FG500B	16" x 16"
FG500C	18" x 18"
FG500D	24" x 24"

P/N	SIZE
FG400A	12" x 12"
FG400B	16" x 16"
FG400C	18" x 18"
FG400D	24" x 24"

P/N	SIZE
FG700A	12" x 12"
FG700B	16" x 16"
FG700C	18" x 18"
FG700C-R	18" x 18" <small>RETAIL READY PACKAGING</small>
FG700D	24" x 24"

P/N	SIZE
FW500A	12" x 12"
FW500B	16" x 16"
FW500C	18" x 18"

P/N	SIZE
FW400A	12" x 12"
FW400B	16" x 16"
FW400C	18" x 18"

P/N	SIZE
FW700A	12" x 12"
FW700B	16" x 16"
FW700C	18" x 18"
FW700C-R	18" x 18" <small>RETAIL READY PACKAGING</small>

REFLECTIVE STRIPE SAFETY FLAGS

Reflective Stripe Flags identify heavy haul trucks and trailers.

- Perfect for low visibility conditions
- Fluorescent Orange Mesh
- 1 3/8" PVC Micro Prism Reflective Stripe
- Black 5/8" Edge Binding to keep edges from fraying
- Double-stitched, reinforced vinyl-coated mesh construction helps resist wind and is great for highway use



INCREASE VISIBILITY FOR ADDED SAFETY

P/N FB400C-EBR	SIZE 18" x 18"	P/N FG400A-EBR	SIZE 12" x 12"
P/N FG400B-EBR	SIZE 16" x 16"	P/N FS400A-EBR	SIZE 12" x 12"
P/N FG400C-EBR	SIZE 18" x 18"	P/N FS400B-EBR	SIZE 16" x 16"
		P/N FS400C-EBR	SIZE 18" x 18"
		P/N FW400A-EBR	SIZE 12" x 12"
		P/N FW400B-EBR	SIZE 16" x 16"
		P/N FW400C-EBR	SIZE 18" x 18"

FLAG STRAPS

FLAG STRAPS WITH SWIVEL SNAP HOOK

The perfect solution for hanging safety flags around the end of any long load. This strap features a cam buckle and steel swivel snap hook for easy installation around logs, pipes, lumber, concrete and more.

- Strong 1" wide red polyester web strap
- Available in 48 inch and 12 foot lengths
- Metal Cam Buckle sewn to strap for added strength
- Steel Swivel Snap Hook securely holds wire loop flags, see page 6

P/N	SIZE
MSFS48	2'
MSFS12	12'



AIRPORT FLAGS WITH GROMMETS AND POCKETS

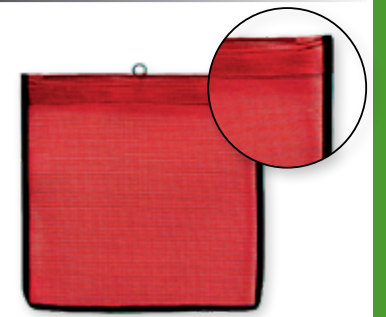
Strong grommets and stitched pole pocket. Hemmed on all four sides. Required on construction vehicles working at airports. (Staff not included). (Size: 36" x 36")

P/N: MSAF-101

OUT OF SERVICE WARNING FLAG

High visibility fluorescent orange knit polyester flag. A great way to prevent accidental hook-ups to an out-of-service trailer. Get your trailers marked and noticed effortlessly. Ideal for use with our popular Flag-Mag. (Page 10)

P/N: FW500C-005



EDGE BINDING

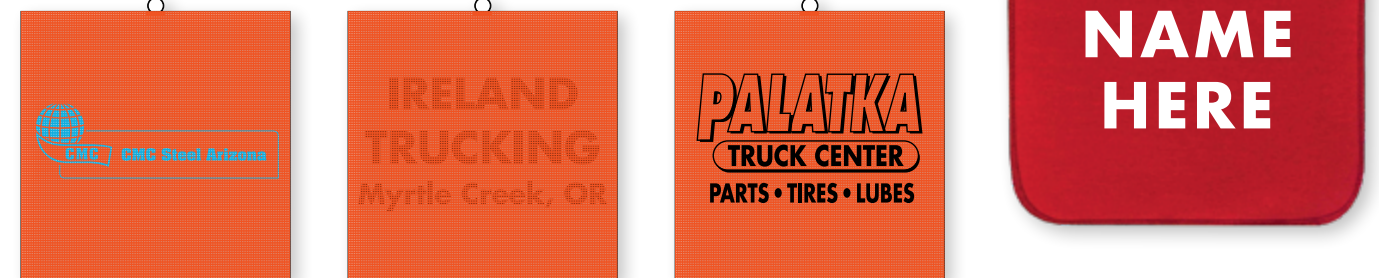
All mesh flags are available with sewn-on black 5/8" edge binding.

P/N: Add "EB" to flag part number

CUSTOM PRINTED FLAGS

Flags can be custom printed with your company's name, logo, phone number, etc.

Minimum run 100 pieces.



UNBREAKABLE PLASTIC FLAG STAFF

No more broken staffs! 3/4" x 30" polypropylene tubing will bend but not break.

P/N: Add "PS" to flag part number



FLAG BRACKET CLAMP

Great for temporary or removable mounts.

- Extruded aluminum "J" clamp
- Stainless steel bolt
- Two clamps recommended for highway use
- Two per bag

P/N: FBC101-R



FLAG BRACKET PIPE

Simple and easy method for mounting staff flags to bumpers, trailers or equipment.

- Mounts to bumpers, fenders and trailers
- Bolt on flag mount
- Galvanized pipe with zinc plated hardware
- Two per bag

P/N: FBP101-R



FLAG-MAGS

Great for attaching our wire loop flags to trailers, machinery and flat steel surfaces. Three sizes of chrome cup magnets with 80, 110 and 120 lbs. of pull on 1/2" steel. Extra epoxy added around magnet to help prevent cracking and failure.



P/N	DIA	HOLE	DESCRIPTION
MF101	2.625"	0.280"	80 LB FLAG MAG W/HARDWARE
MF101-R	2.625"	0.280"	80 LB FLAG MAG W/HARDWARE <small>RETAIL READY PACKAGING</small>
MF180	3.20"	0.280"	110 LB FLAG MAG W/HARDWARE
MF185	3.79"	0.380"	120 LB FLAG MAG W/HARDWARE

ROUND BASE MAGNETS

Standard round base magnet assemblies are made with ceramic magnets in steel base cups. They are magnetized together with the casings to create a holding force that is up to 32 times stronger than an individual ceramic magnet.

Neodymium rare earth magnets are extremely powerful and are nickel plated with a protective cover.

P/N	DIA	HOLE	DESCRIPTION
RB75	2.625"	0.280"	80 LB ROUND BASE MAGNET
RB-50NEO	2.030"	0.187	90 LB. NEO W / COVER
RB80	3.20"	0.280"	110 LB ROUND BASE MAGNET
RB85	3.79"	0.380"	120 LB ROUND BASE MAGNET
RB90	4.90"	0.500"	210 LB ROUND BASE MAGNET

**Ratings based on Manufacturer's data*

Pull strength is measured on a flat 0.50" thick steel plate. Use caution when handling our magnets. Their exceptional magnetic force will attract to metal and each other, don't get pinched.



Common Applications

Antenna mounts • Work lamp bases • Emergency light holders • Vehicle flag holders • Sign and banner holders

VINYL BANNERS

Our Vinyl Banners are exceptionally strong and durable. Printed on 13 oz. vinyl-laminated polyester, they are tear and fray resistant. Fitted with large #5 toothed grommets or heavy 3/8" bungee cords. Grommets have a 9/16" center hole and are set with 90 lbs of pressure.

Bungees are 18" with coated steel hooks. Our 18"x 84" banners exceed AASHTO requirements for all 50 states. All banners are double-stitched.



P/N	SIZE	MESSAGE	PRINT	TEXT HEIGHT	STYLE
AV100	18" x 84"	WIDE LOAD	1-SIDED	12" LETTERS	GROMMET
AV102	18" x 84"	OVERSIZE LOAD / WIDE LOAD	2-SIDED	12" LETTERS	GROMMET
AV103	18" x 84"	OVERSIZE LOAD / LONG LOAD	2-SIDED	12" LETTERS	GROMMET
AV104	18" x 84"	OVERSIZE LOAD	1-SIDED	12" LETTERS	GROMMET
AVB100	18" x 84"	WIDE LOAD	1-SIDED	12" LETTERS	BUNGEE
AVB102	18" x 84"	OVERSIZE LOAD / WIDE LOAD	2-SIDED	12" LETTERS	BUNGEE
AVB104	18" x 84"	OVERSIZE LOAD	1-SIDED	12" LETTERS	BUNGEE
CV100	12" x 72"	WIDE LOAD	1-SIDED	10" LETTERS	GROMMET
CV102	12" x 72"	OVERSIZE LOAD / WIDE LOAD	2-SIDED	10" LETTERS	GROMMET
CV103	12" x 72"	OVERSIZE LOAD / LONG LOAD	2-SIDED	10" LETTERS	GROMMET
CV104	12" x 72"	OVERSIZE LOAD	1-SIDED	10" LETTERS	GROMMET
CV104AZ	12" x 72"	OVERSIZE LOAD w/BORDER	1-SIDED	8" LETTERS	GROMMET
CV104AZ/CA	12" x 72"	OVERSIZE LOAD / OVERSIZE LOAD w/BORDER	2-SIDED	8" & 10" LETTERS	GROMMET
CVB102	12" x 72"	OVERSIZE LOAD / WIDE LOAD	2-SIDED	10" LETTERS	BUNGEE
CVB104	12" x 72"	OVERSIZE LOAD	1-SIDED	10" LETTERS	BUNGEE
CV104CO	12" x 60"	OVERSIZE LOAD	1-SIDED	10" LETTERS	GROMMET
CV110AK	12" x 48"	OVERSIZE	1-SIDED	10" LETTERS	GROMMET
CVB110AK	12" x 48"	OVERSIZE LOAD w/BUNGEE	1-SIDED	10" LETTERS	BUNGEE



"The product holds up well. I fly the signs most of the ride and can get 6 months of use out of one banner!"
~Ed - Boise, ID

"We use SafeTruck products on our oversize loads because of the durability. They last much longer than any other flags or banners that we have used in the past! The color holds much better as well."
~William - Barto, PA

MESH BANNERS

Our mesh banners are made of 9 oz. vinyl-coated polyester that allow up to 30% airflow for less wind resistance. All mesh banners are double-stitched with edge binding top and bottom.



P/N	SIZE	MESSAGE	PRINT	TEXT HEIGHT	STYLE
AVM100	18" x 84"	WIDE LOAD	1-SIDED	12" LETTERS	GROMMET
AVM104	18" x 84"	OVERSIZE LOAD	1-SIDED	12" LETTERS	GROMMET
AVM105OR	18" x 84"	LONG LOAD	1-SIDED	12" LETTERS	GROMMET
AVMB100	18" x 84"	WIDE LOAD	1-SIDED	12" LETTERS	BUNGEE
AVMB104	18" x 84"	OVERSIZE LOAD	1-SIDED	12" LETTERS	BUNGEE
AVMB105OR	18" x 84"	LONG LOAD	1-SIDED	12" LETTERS	BUNGEE
CVM100	12" x 72"	WIDE LOAD	1-SIDED	10" LETTERS	GROMMET
CVM104	12" x 72"	OVERSIZE LOAD	1-SIDED	10" LETTERS	GROMMET
CVM104AZ	12" x 72"	OVERSIZE LOAD w/BORDER	1-SIDED	8" LETTERS	GROMMET
CVMB104	12" x 72"	OVERSIZE LOAD	1-SIDED	10" LETTERS	BUNGEE
CVM104CO	12" x 60"	OVERSIZE LOAD	1-SIDED	10" LETTERS	GROMMET
CVMB104CO	12" x 60"	OVERSIZE LOAD	1-SIDED	10" LETTERS	BUNGEE
CVM110AK	12" x 48"	OVERSIZE	1-SIDED	10" LETTERS	GROMMET
CVMB110AK	12" x 48"	OVERSIZE	1-SIDED	10" LETTERS	BUNGEE



"The thing I like best about the SafeTruck Mesh Banners with Bungees is that they are easy to use - Just hook and go, as handy as a pocket in pants!"
~James - Denver, PA

REFLECTIVE BANNERS

Ideal for added safety during night moves and inclement weather.

CHOOSE FROM STANDARD GRADE
OR OUR **NEW HIGH INTENSITY REFLECTIVE**



OVERSIZE LOAD

ALUMINUM SIGNS

Aluminum signs are made from .090" premium quality aluminum. Hinged aluminum signs can be bolted to bumpers and folded down when not in use.



P/N	SIZE	MESSAGE	PRINT	MATERIAL	TEXT HEIGHT	STYLE
AVR104	18" x 84"	OVERSIZE LOAD	1-SIDED	REFLECTIVE	12" LETTERS	GROMMET
AVR104-HI	18" x 84"	OVERSIZE LOAD	1-SIDED	HIGH INTENSITY REFLECTIVE	12" LETTERS	GROMMET
AVR105OR	18" x 84"	LONG LOAD	1-SIDED	REFLECTIVE	12" LETTERS	GROMMET
AVR105OR-HI	18" x 84"	LONG LOAD	1-SIDED	HIGH INTENSITY REFLECTIVE	12" LETTERS	GROMMET
AVRB104	18" x 84"	OVERSIZE LOAD	1-SIDED	REFLECTIVE	12" LETTERS	BUNGEE
AVRB104-HI	18" x 84"	OVERSIZE LOAD	1-SIDED	HIGH INTENSITY REFLECTIVE	12" LETTERS	BUNGEE
AVRB105OR	18" x 84"	LONG LOAD	1-SIDED	REFLECTIVE	12" LETTERS	BUNGEE
AVRB105OR-HI	18" x 84"	LONG LOAD	1-SIDED	HIGH INTENSITY REFLECTIVE	12" LETTERS	BUNGEE
CVR104	12" x 72"	OVERSIZE LOAD	1-SIDED	REFLECTIVE	10" LETTERS	GROMMET
CVR104-HI	12" x 72"	OVERSIZE LOAD	1-SIDED	HIGH INTENSITY REFLECTIVE	10" LETTERS	GROMMET
CVR104AZ	12" x 72"	OVERSIZE LOAD w/BORDER	1-SIDED	REFLECTIVE	8" LETTERS	GROMMET
CVR104AZ-HI	12" x 72"	OVERSIZE LOAD w/BORDER	1-SIDED	HIGH INTENSITY REFLECTIVE	8" LETTERS	GROMMET
CVR104CO	12" x 60"	OVERSIZE LOAD	1-SIDED	REFLECTIVE	10" LETTERS	GROMMET
CVR104CO-HI	12" x 60"	OVERSIZE LOAD	1-SIDED	HIGH INTENSITY REFLECTIVE	10" LETTERS	GROMMET
CVR110AK	12" x 48"	OVERSIZE	1-SIDED	REFLECTIVE	10" LETTERS	GROMMET
CVR110AK-HI	12" x 48"	OVERSIZE	1-SIDED	HIGH INTENSITY REFLECTIVE	10" LETTERS	GROMMET

P/N	SIZE	MESSAGE	HINGED	REFLECTIVE	TEXT HEIGHT
AA101	18" x 84"	WIDE LOAD	NO	NO	12" LETTERS
AA104	18" x 84"	OVERSIZE LOAD	NO	NO	12" LETTERS
AAH101	18" x 84"	WIDE LOAD	YES	NO	12" LETTERS
AAH104	18" x 84"	OVERSIZE LOAD	YES	NO	12" LETTERS
AAR101	18" x 84"	WIDE LOAD	NO	YES	12" LETTERS
AAR104	18" x 84"	OVERSIZE LOAD	NO	YES	12" LETTERS
AAR105	18" x 84"	LONG LOAD	NO	YES	12" LETTERS
AARH101	18" x 84"	WIDE LOAD	YES	YES	12" LETTERS
AARH104	18" x 84"	OVERSIZE LOAD	YES	YES	12" LETTERS
AARH105	18" x 84"	LONG LOAD	NO	YES	12" LETTERS
CA100	12" x 72"	WIDE LOAD	NO	NO	10" LETTERS
CA104	12" x 72"	OVERSIZE LOAD	NO	NO	10" LETTERS
CA104AZ	12" x 72"	OVERSIZE LOAD w/BORDER	NO	NO	8" LETTERS
CAH100	12" x 72"	WIDE LOAD	YES	NO	10" LETTERS
CAH104	12" x 72"	OVERSIZE LOAD	YES	NO	10" LETTERS
CAH104AZ	12" x 72"	OVERSIZE LOAD w/BORDER	YES	NO	8" LETTERS
CAR100	12" x 72"	WIDE LOAD	NO	YES	10" LETTERS
CAR104	12" x 72"	OVERSIZE LOAD	NO	YES	10" LETTERS
CAR104AZ	12" x 72"	OVERSIZE LOAD w/BORDER	NO	YES	8" LETTERS
CARH100	12" x 72"	WIDE LOAD	YES	YES	10" LETTERS
CARH104	12" x 72"	OVERSIZE LOAD	YES	YES	10" LETTERS
CARH104AZ	12" x 72"	OVERSIZE LOAD w/BORDER	YES	YES	10" LETTERS
CA104CO	12" x 60"	OVERSIZE LOAD	NO	NO	10" LETTERS
CAH104CO	12" x 60"	OVERSIZE LOAD	YES	NO	10" LETTERS
CAR104CO	12" x 60"	OVERSIZE LOAD	NO	YES	10" LETTERS
CARH104CO	12" x 60"	OVERSIZE LOAD	YES	YES	10" LETTERS
AA100	18" x 30"	WIDE LOAD (2-PIECE)	NO	NO	12" LETTERS

Double-sided aluminum signs also available - Page 60

MAGNETIC SIGNS

Made from heavy .030" magnetic sheeting material, they are perfect for bumpers, tailgates, dozer blades, cranes, or any steel surface. Magnets are flexible and can be rolled for easy storage.



P/N	SIZE	MESSAGE	PRINT	MATERIAL	TEXT HEIGHT	STYLE
AM104	18" x 84"	OVERSIZE LOAD	1-SIDED	FLEX-MAG	12" LETTERS	MAGNETIC
CM104	12" x 72"	OVERSIZE LOAD	1-SIDED	FLEX-MAG	10" LETTERS	MAGNETIC
CM104CO	12" x 60"	OVERSIZE LOAD	1-SIDED	FLEX-MAG	10" LETTERS	MAGNETIC



"I recommend SafeTruck Aluminum Signs to anyone!
ALL of my safety products are ST/MS. Carita - and as far as I'm concerned it is going to stay that way.
I've used other products and your products out last them all!"
~Paul - Cheyenne, WY

WOOD SIGNS

Our wood signs are made from premium quality 3/8" DMDO (double medium density overlay). We seal the edges and prime the surface before coating with enamel. After printing they are top-coated to ensure a long service life.



"SafeTruck Wood Signs are easy to purchase, not too expensive, very durable, and the color seems to last a long time. SafeTruck's customer service is excellent as are the vendors I work with."
~JD - Petaluma, CA

P/N	SIZE	MESSAGE	PRINT	REFLECTIVE	TEXT HEIGHT
AWD204	18" x 84"	OVERSIZE LOAD	2-SIDED	NO	12" LETTERS
AWR204	18" x 84"	OVERSIZE LOAD	1-SIDED	YES	12" LETTERS
AWS204	18" x 84"	OVERSIZE LOAD	1-SIDED	NO	12" LETTERS
CWD204	12" x 72"	OVERSIZE LOAD	2-SIDED	NO	10" LETTERS
CWR204	12" x 72"	OVERSIZE LOAD	1-SIDED	YES	10" LETTERS
CWR204AZ	12" x 72"	OVERSIZE LOAD w/BORDER	1-SIDED	YES	8" LETTERS
CWS200	12" x 72"	WIDE LOAD	1-SIDED	NO	10" LETTERS
CWS204	12" x 72"	OVERSIZE LOAD	1-SIDED	NO	10" LETTERS
CWS204AZ	12" x 72"	OVERSIZE LOAD w/BORDER	1-SIDED	NO	8" LETTERS
CWS210CA	12" x 72"	OVERSIZE	1-SIDED	NO	10" LETTERS
CWD204CO	10" x 60"	OVERSIZE LOAD	2-SIDED	NO	8" LETTERS
CWD204PC	12" x 60"	OVERSIZE LOAD	2-SIDED	NO	10" LETTERS
CWS204CO	10" x 60"	OVERSIZE LOAD	1-SIDED	NO	8" LETTERS
CWS204PC	12" x 60"	OVERSIZE LOAD	1-SIDED	NO	10" LETTERS
NPC110480CA	10" x 48"	OVERSIZE	2-SIDED	NO	8" LETTERS
NPC110459CA	13.5" x 34"	OVERSIZE	2-SIDED	NO	8" LETTERS



**BIGGER.
STRONGER.
SAFER.**

This SafeTruck Wood Sign was purchased in the 1980s. Still going strong today!

San Luis Delta Mendota Water Authority
Byron, CA

OVERSIZE VINYL DECALS

Available in high quality reflective and non-reflective 5 year outdoor vinyl decals with permanent adhesive. Our decals can be applied directly to crane bumpers, wood, aluminum or steel.



P/N	SIZE	MESSAGE	REFLECTIVE	TEXT HEIGHT
AD100	18" x 84"	WIDE LOAD	NO	12" LETTERS
AD104	18" x 84"	OVERSIZE LOAD	NO	12" LETTERS
ADR100	18" x 84"	WIDE LOAD	YES	12" LETTERS
ADR104	18" x 84"	OVERSIZE LOAD	YES	12" LETTERS
CD100	12" x 72"	WIDE LOAD	NO	10" LETTERS
CD104	12" x 72"	OVERSIZE LOAD	NO	10" LETTERS
CD104AZ	12" x 72"	OVERSIZE LOAD w/BORDER	NO	8" LETTERS
CDR100	12" x 72"	WIDE LOAD	YES	10" LETTERS
CDR104	12" x 72"	OVERSIZE LOAD	YES	10" LETTERS
CDR104AZ	12" x 72"	OVERSIZE LOAD w/BORDER	YES	8" LETTERS
CD104CO	12" x 60"	OVERSIZE LOAD	NO	10" LETTERS
CDR104CO	12" x 60"	OVERSIZE LOAD	NO	10" LETTERS

SPECIALTY BANNERS

Printed on 13 oz. vinyl-laminated polyester. These banners are tear and fray resistant. Fitted with large #5 toothed grommets. Grommets have a 9/16" center hole and are set with 90 lbs of pressure. Our specialty banners meet the requirements for special hauls.



P/N	SIZE	MESSAGE	PRINT	MATERIAL	TEXT HEIGHT	STYLE
AVFMI	18" x 84"	OVERSIZE LOAD / 16', 14' & 12' WIDE LOAD	2-SIDED	VINYL	12" CHANGEABLE NUMBERS	GROMMET
AVRMI	18" x 96"	OVERSIZE LOAD / 16', 14' & 12' WIDE LOAD	2-SIDED	VINYL	12" & 16" LETTERS CHANGEABLE NUMBERS	GROMMET
CV104AZ/MX	12" x 72"	OVERSIZE LOAD w/BORDER/SPANISH	2-SIDED	VINYL	8" & 10" LETTERS	GROMMET
CV112	12" x 96"	"D"	1-SIDED	VINYL	8" LETTERS	GROMMET
CVR112	12" x 96"	"D"	1-SIDED	VINYL	8" LETTERS	GROMMET
CY100	12" x 48"	CONVOY	1-SIDED	VINYL	10" LETTERS	GROMMET

FOX FIRE®

FOX FIRE® PREMIUM MAGNETIC LED LIGHTS

Features polycarbonate lens with optic magnifiers for maximum visibility. Sold with two 90lb Neodymium magnets (moving vehicles). Our 2018 release features improved water resistance and upgraded electronics elements including:

- Upgraded compression gasket between lens and base
- Redesigned battery door - compression gasket, tighter seal
- Enhanced switch cover for improved water resistance
- Entire board conformal coated
- 20% brighter LED lights
- Side-facing LED's for 360 degree illumination
- Does not fit in kit carrying case
- 90-lb magnets



- 26 bright LEDs
- Constant On / Fast Flash / Wig-Wag Flash
- 360 degree illumination
- 4 "AA" batteries required (not included)

P/N#	DESCRIPTION
MSF263M-RED	Red
MSF263M-AMBER	Amber

FOX FIRE® LIGHT KITS

- 4 light kits with 90-lb. magnets
- Batteries included

P/N#	DESCRIPTION
MSMPFM-4LKA	4 Amber
MSMPFM-4LKR	4 Red
MSMPFM-4LKAR	2 Amber & 2 Red

*All kits filled with F262 style lights



FOX FIRE®

PREMIUM MAGNETIC LED LIGHTS



STANDARD MAG	90lb MAG
MSF262-BLUE	MSF262M-BLUE
MSF262-WHITE	MSF262M-WHITE
MSF262-GREEN	MSF262M-GREEN
MSF262-RED	MSF262M-RED
MSF262-AMBER	MSF262M-AMBER



FOX FIRE® LOGGER LIGHT

- Constant On/Fast Flash/Wig-Wag Flash
- 26 super bright LEDs
- Available in Amber or Red LEDs
- Durable polycarbonate lens
- Completely portable - no wires to deal with
- "T-Handle" mounting tool included
- Visible over 1 mile
- Incredibly easy to install and maintain
- Battery operated - requires 4 "AA" (included)

P/N: MSFLLKB-A (AMBER)
P/N: MSFLLKB-R (RED)

*Replacement T-Handle's Available:
(P/N: 6005099)



FOX FIRE® ARROW LIGHTS

Great for directing traffic on any worksite or emergency situation. Sold with standard magnetic backing or with two 90 lb. magnets. (standard magnets for stationary use only and 90 lb. magnets recommended on moving vehicles.)

- 20 super bright LEDs
 - 20 LEDs flash in directional arrow pattern
 - LED magnifiers
 - Magnetic backing
 - Available in Red and Amber
 - 4 "AA" batteries required (not included)
- (See page 53 for batteries)



P/N#	DESCRIPTION
MSSL193-RED	Standard Magnets
MSSL193M-RED	90-lb. Magnets
MSSL193-AMBER	Standard Magnets
MSSL193M-AMBER	90-lb. Magnets

FOX FIRE®

ADJUSTABLE MAGNETIC BASE

Equipped with a strong magnet, this adjustable base adds considerable utility to the Foxfire® Lights. With the AMB-FF, any of our lights can be attached to most metal surfaces and easily adjusted to any angle within a 90° range. Light easily removes from base using a quick release interlock feature.



P/N: AMB-FF

*Light sold separately



*Does not fit 263 series Foxfires

FOXFIRE[®] PERSONAL SAFETY LIGHTS

Don't let their size fool you – these small lights pack a lot of punch! Multiple LEDs housed in a lightweight casing provide maximum visibility for maximum safety.

If you need to be visible during outdoor activities, these lights are an excellent way to ensure you are seen.

- 4 LEDs
- 3 light patterns
- Other colors available
- 2 “AA” batteries required (not included)
(See page 53 for batteries)

PN: PSL-43-AMBER
PN: PSL-43-RED



PERSONAL SAFETY LIGHT / BICYCLE TAIL LIGHT

Increase visibility and stay safe with this personal safety light.

- 5 LEDs
- 6 light patterns
- Quick-release seatpost mount
- Visible up to 1/2 mile
- Includes belt clip for personal safety use
- 2 “AA” batteries required (not included)
(See page 53 for batteries)

PN: SPL-56-R



MAXIMUM VISIBILITY for MAXIMUM SAFETY

FOXFIRE[®] BY MARPAC

LIGHTED SAFETY BAND

PERFECT FOR:
NIGHT CONSTRUCTION
TRAFFIC CONTROL
HIGHWAY SAFETY
EMS

**HI-VIS REFLECTIVE EDGE
BANDING MATERIAL**

Use grommet to
hang Safety Band
in rigid flattened state.

P/N#	DESCRIPTION
6001751	Orange
6001752	Green



**NO Snaps
NO Buttons
Just slap it on!**

**SUPER BRIGHT RED LIGHT
LASTS 100,000 HOURS!**

**2 LIGHT MODES! CONSTANT ON & FLASH
100 HOURS BATTERY LIFE**
Includes replaceable lithium coin cell



HARD HAT SAFETY LIGHT

Essential for anyone working in a hard hat environment.

- 4 LEDs
- 3 light patterns
- Custom molded bracket
- Adheres to hard hat polymers
- 2 “AA” batteries (included)

PN: EHHL43-AMBER
PN: EHHL43-RED



- Mining
- Logging
- Construction

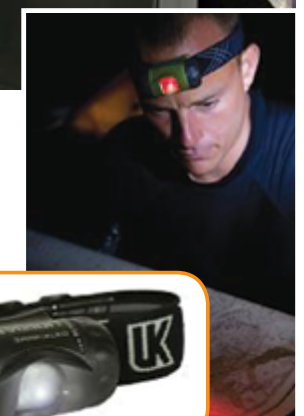
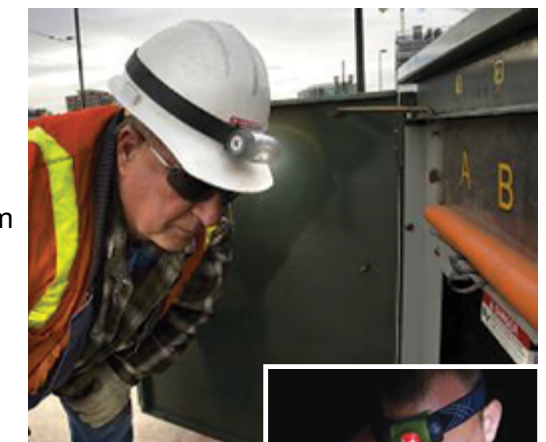


VIZION[™] 1 HARD HAT LIGHT

For superior hands-free illumination in every situation, count on the Vizion[™] 1.

- Waterproof to 15 feet
- Intrinsically safe
- Proprietary Compound Path Optics (CPO) permits high efficiency and compact size
- Thermal Recovery System recycles heat from the LED to warm batteries for improved performance in low temperatures
- Remarkably lightweight and waterproof design for all weather use
- 3 selectable beam patterns - Spot, Diffused and Red Diffused
- High and Low power settings
- Large push button control switch works with heavy gloves
- LED lamp module can be removed from mounting strap for use as a portable work light
- Rotating beam angle adjustment knob, no hinge to break
- High impact ABS, LEXAN[®] and molded rubber construction for durability
- Fits any hard hat
- Requires 3 “AAA” batteries (included)
- Made in the USA

P/N: MS17018



STANDARD MAGNETIC SIGNAL LIGHT (SL SERIES)

Sold with standard magnetic backing or with two 90 lb. magnets. (Standard magnets for stationary use only and 90 lb. magnets recommended for moving vehicles.)

- 18 super bright LEDs
 - Constant On/Fast Flash
 - Polycarbonate lens
 - Rugged construction
 - Completely portable
 - 4 "AA" batteries required (not included)
- (See page 53 for batteries)

P/N#	DESCRIPTION
MSSL182-RED	Standard Magnets
MSSL182M-RED	90-lb. Magnets
MSSL182-AMBER	Standard Magnets
MSSL182M-AMBER	90-lb. Magnets



MAGNETIC TOW LIGHTS

- High quality, low cost
- Adjustable rubber heads with sealed lamps
- 30 ft all weather cable
- 4-way diecast plug
- Great for towing cars, trailers and dollies

P/N: MTL101



PORTABLE SAFETY LIGHT

- Compact and portable (size: 4.75" x 3.90")
 - 24 ultra-bright LEDs
 - Visible 360-degree lighting
 - Includes carrying strap and magnetic base
 - Optional use photocell
 - Runs on two "D" batteries for 300-400 hours (batteries not included)
- (See page 53 for batteries)

P/N: PSLM2-A



All of our wide turn kits are CHP and D.O.T. approved under section #108 and are made from 18-gauge galvanized steel construction.

LEFT OR RIGHT WIDE TURN SIGNAL

- 8" amber arrow, 12 volt
- 8" x 15" D.O.T. decal approved statement
- Replaceable 1156 bulb
- Overall Size: 8" x 24"

Left - P/N: MSGL101
Right - P/N: MSGR101



UNIVERSAL WIDE TURN SIGNAL KIT

- 8" amber arrow, 12 volt
- D.O.T. approved decal
- Fits on trailers with skirts
- Replaceable 1156 bulb
- Overall Size: 8" x 18"

P/N: MSG1800



*You apply decal to indicate left or right turn

SEAL BEAM UNIVERSAL WIDE TURN KIT

- 12-volt
- Standard 4" seal beam
- 3-wire, PL-3 pigtail included
- Overall Size: 8" x 18"

P/N: SB-G-1800

*You apply decal to indicate left or right turn



7-DIODE UNIVERSAL WIDE TURN KIT

- 12-volt
- Fits on trailers with skirts
- 2-wire, PL-3 pigtail included
- Overall Size: 8" x 18"

P/N: LED-G-7-1800

*You apply decal to indicate left or right turn



9-DIODE UNIVERSAL WIDE TURN KIT

- 9 to 28-volt
- Fits on trailers with skirts
- 3-wire, PL-3 pigtail included
- Overall Size: 8" x 18"

P/N: LED-G-9-1800

*You apply decal to indicate left or right turn



36-DIODE UNIVERSAL WIDE TURN KIT

- 9 to 28-volt
- Fits on trailers with skirts
- 3-wire, PL-3 pigtail included
- Overall Size: 8" x 18"

P/N: LED-G-36-1800

*You apply decal to indicate left or right turn



All units include pigtails or once mounting hardware



LED SAFETY CONE LIGHTS

- Size: 2" L x 2" W x 3.75" H
- Available in Red or Amber
- Fits safety cones with a 7/8" opening
- 2 AAA batteries required (not included)
- (See page 53 for batteries)

P/N: MS1195 (RED)
P/N: MS1196 (AMBER)

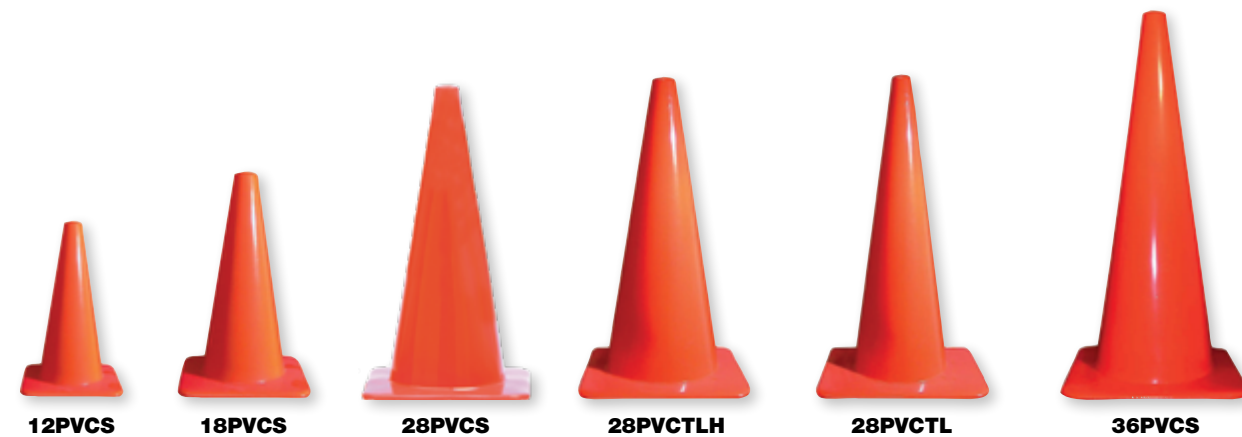


FLUORESCENT ORANGE TRAFFIC CONES

Tough enough for any work area. One-piece, flow-molded polyvinyl chloride, anti-fade fluorescent orange color with broad base for stability.

- Heat resistant to 160° F
- Elongation: 200%
- Tensile strength: 1200 psi minimum
- Hardness 80±5 conical, 75±5 base
- Tear strength: 250 lbs. psi

MODEL#	CONE HEIGHT	TOP THICKNESS	BOTTOM THICKNESS	WEIGHT LBS.	PER CRTN.
12PVCS	12"	.065"	.120"	1½	30
18PVCS	18"	.065"	.120"	3	20
28PVCS	28"	.075"	.130"	7	10
28PVCTL	28"	.075"	.130"	5	10
28PVCTLH	28"	.080"	.135"	10	10
36PVCS	36"	.075"	.130"	10	10



REFLECTIVE CONE COLLAR SETS

Cone collars provide brilliant reflectivity and help to keep safe zones vividly clear. Meets all MUTCD requirements.
(Available for 28" and 36" Cones Only)

P/N	DESCRIPTION	FITS
6CC4C-28S	28" Standard Cone Collar Set	28PVCS
6CC4C-28T	28" Trimline Cone Collar Set	28PVCTL & 28PVCTLH
6CC4C-36S	36" Standard Cone Collar Set	36PVCS

6" UPPER COLLAR
4" LOWER COLLAR

Permanent Stenciling Available

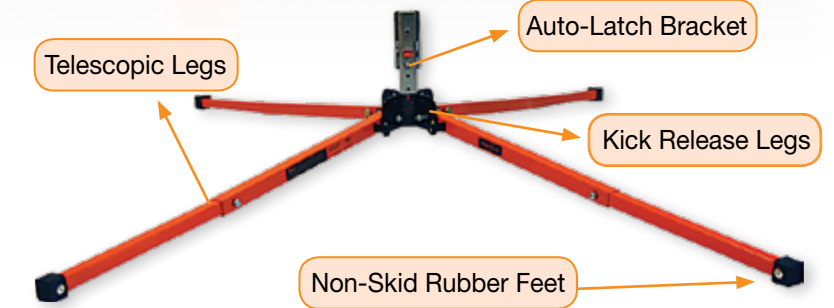


SAFEZONE SIGN STANDS

The SafeZone Series SZ-412 is a lightweight compact sign stand for use with roll-up signs. Legs have three height adjustments for use on uneven terrain making it easy to set up along right of ways and medians. The right choice for Utility Companies, DOT's, City and County Governments or anyone working along secondary roads or city streets.

- Auto-Latch Bracket
- Compact and Lightweight
- Telescopic Legs
- Pull Pin / Kick release lever
- NCHRP350 Approved

P/N: SZ-412 (without spring)
P/N: SZ-412-S (spring included)



SAFEZONE SIGNS

All SafeZone Signs and overlays are made of premium grade materials.

- Choose from: Reflective, Solid Vinyl, Mesh
- Corner Pockets
- Heavy-duty polyglass sign frame
- Anti-kiting device
- Hook and loop tie strap for storage
- Conforms to MUTCD requirements
- NCHRP-350 tested and certified



See page 57 for message index

P/N: 36 3M REFL P/N: 36 MESH P/N: 36 VINYL

P/N: 36 VINYL P/N: 36 MESH P/N: 36 VINYL

LEFT CENTER
1000FT
500FT
1500FT
SNAP ON OVERLAYS

SUPER BRIGHT 9 LED FLASHLIGHT

These lightweight, aluminum, and compact flashlights are the perfect flashlight for on the go and storage in your glove compartment.

- Nine LEDs
- Size: 1-1/8" x 3-3/4"
- On/Off button on the bottom
- Uses 3 "AAA" batteries (included)



P/N#
LED721-RED
LED721-BLUE
LED721-BLACK

MULTI-COLOR BATON

Batons are durable and water resistant.

- 21" Traffic baton
- 3 colors: Red, Green and Blue
- 2 modes: Steady on and Flashing
- Uses 3 "C" batteries (not included)
(See page 53 for batteries)



Handy Belt Clip

Three Colors in one Baton

P/N: MSXG408RGB

RED COLORED LIGHT WAND

- 15" red traffic wand
- Built-in 5 LED flashlight
- 4 Functions: Flashlight, Flashlight w/Red Flashing, Red Flashing, Steady On
- Handy belt clip and mesh strap
- Uses 2 "D" batteries (not included)
(See page 53 for batteries)



P/N: MSXG411TW

TRIPLE BURST STROBES



P/N#	DESCRIPTION
MSTR551CA-ST	6" Clear Lens, Amber LEDs Regular Strobe Light
MSTR551A-ST	6" Amber Lens, Amber LEDs Regular Strobe Light
MSTR550CA-ST	4" Clear Lens, Amber LEDs Regular Strobe Light
MSTR550A-ST	4" Amber Lens, Amber LEDs Regular Strobe Light
MSTR553CALED	Clear Lens, Amber LEDs Surface Mount Strobe Light
MSTR553CWLED	Clear Lens, Clear LEDs Surface Mount Strobe Light
MSPT-3	3-Prong Pigtail

SLOW-MOVING VEHICLE EMBLEM

SMV emblems are required for all heavy equipment, farm machinery, as well as horse drawn buggies, when used on public roads and highways. The center triangle panel is fluorescent orange for daytime visibility. Border is high intensity red reflective for night visibility.



P/N: SMV104 (DECAL)

P/N: SMV105 (PLASTIC)

P/N: SMV106 (METAL)

V-MARK CONSPICUITY TAPE

Smooth, flat, exterior film with retro-reflective elements embedded beneath the film.

- 7 year durability decal
- Rolls: 2" W x 150' L
- Strips: 2" W x 18" L
- Conforms to DOT-C2 photometry requirements



P/N: MSGBC2R

P/N: MSGBCS-18"

PRODUCT	DESCRIPTION	SPECS	GRADE
MSGBC2R	11" Red / 7" Silver	2" x 150' Roll	7 YR
MSGBCS-18"	11" Red / 7" Silver, Pre-cut Strips	2" x 18" (100/box)	7 YR

CONSPICUITY TAPE

3M™ Flexible Prismatic Conspicuity Markings Series 963.

- Thin, flexible prismatic tape for application to smooth surfaces as well as around rivets and corners
- 5 year warranty
- DOT-C2 certified

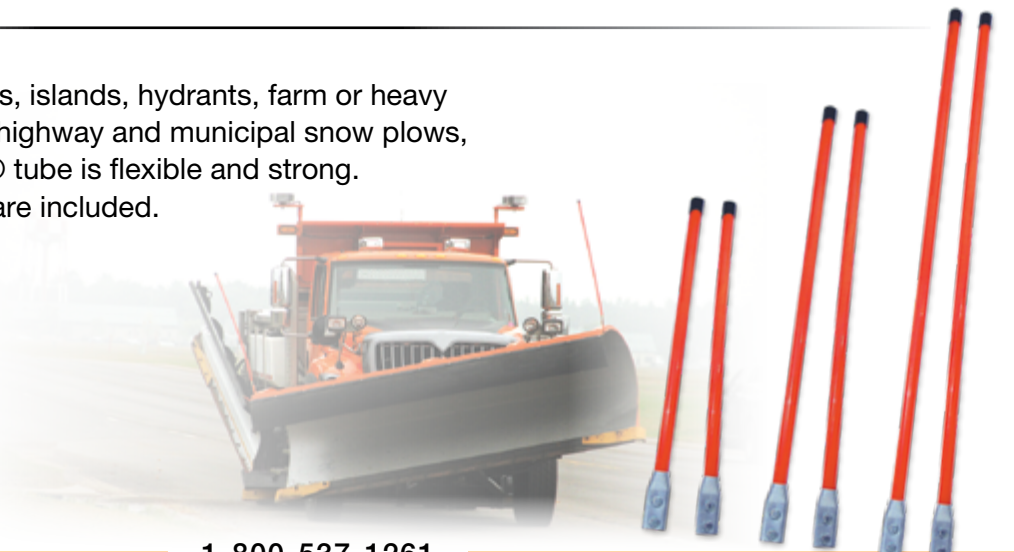


PRODUCT	DESCRIPTION	SPECS	WARRANTY
845704	11" Red / 7" Silver	2" x 150' Roll	5 YR
845772	11" Red / 7" Silver, Pre-cut Strips	2" x 18" (100/box)	5 YR

BUMPER GUIDES

Heavy duty marker for curbs, islands, hydrants, farm or heavy equipment. Designed to fit highway and municipal snow plows, .75" O.D. DuPont™ Hytrel® tube is flexible and strong. Available in 3 sizes. Hardware included. Made in USA.

- 48" - P/N: BG48F
- 36" - P/N: BG36F
- 28" - P/N: BG28F



REFLECTIVE SAFETY VEST

The high-visibility color helps to make individuals wearing this vest easy to spot. Be Seen. Be Safe.

Features:

- Lightweight, fluorescent knit polyester mesh fabric
- 3/8" black trim
- Two 1" reflective silver stripes vertically sewn front to back
- Elastic side straps for universal One-Size-Fits-Most
- Hook and loop front closure
- Foldable and washable

Note:

This vest does not meet ANSI standards but is acceptable in many circumstances requiring increased daytime and nighttime visibility. Vest should be used where increased visibility is required.



REFLECTIVE SAFETY VEST	
PART NUMBER	PRODUCT DESCRIPTION
VH201	Flo-Orange, 3/4" Reflective Green Stripes
VH302	Green, 1" Reflective Silver Stripes
VH303	Green, 1" Reflective Flo-Orange Stripes



Nighttime Visibility

HIGH-VISIBILITY CLASS 2 SAFETY VESTS

- Type R, Class 2
- ANSI/ISEA 107-2015
- Polyester Mesh
- Zipper Closure
- 2" Reflective Tape
- 2 Horizontal Stripes
- 1 Inside Pocket

LIME CLASS 2 SAFETY VEST	
MSV241-L	
MSV241-XL	



VINYL COATED POLYESTER MESH VESTS

Vinyl-coated polyester vests are lightweight yet firmer than knit vests. Hook and loop front closures with elastic side straps. One-Size-Fits-Most.

VINYL COATED POLYESTER MESH VEST	
PART NUMBER	PRODUCT DESCRIPTION
VH100	Flo-Orange with No Stripes
VH101	Flo-Orange with Lime Green Stripes



HIGH VISIBILITY POLYESTER VEST

2" orange with reflective silver striping, zipper front closure with multi-pockets.

- Custom logo printing available
- Minimum print run - 50 pieces
- Sizes: L - 5X

HIGH VISIBILITY POLYESTER VEST		
VH500-L	VH500-2XL	VH500-4XL
VH500-XL	VH500-3XL	VH500-5XL



CLASS 2 SAFETY VESTS

- ANSI/ISEA 107-2004 Class 2
- 100% Polyester
- Open weave mesh upper, solid on lower body
- Zipper front closure
- 2 vertical and 1 horizontal 2" wide reflective stripes both front and back
- Individual chest pockets for pens and 1 tool/cell phone pocket
- 2 flap pockets
- Sizes: M-4XL

ORANGE CLASS 3 SAFETY VEST		
MS330C-2-M	MS330C-2-XL	MS330C-2-3XL
MS330C-2-L	MS330C-2-2XL	MS330C-2-4XL

LIME CLASS 3 SAFETY VEST		
MS530C-2-M	MS530C-2-XL	MS530C-2-3XL
MS530C-2-L	MS530C-2-2XL	MS530C-2-4XL



CLASS 3 SAFETY VESTS

- ANSI/ISEA 107-2004 Class 3
- 100% Polyester
- Open weave mesh upper, solid on lower body
- Zipper front closure
- 2 vertical and 2 horizontal 2" wide reflective stripes both front and back
- 2" wide reflective stripes on sleeves
- Chest pockets: Pens, 1 tool/cell phone pocket
- 2 flap pockets
- Size: L-4XL

ORANGE CLASS 3 SAFETY VEST		
MS339C-3-L	MS339C-3-2XL	MS339C-3-4XL
MS339C-3-XL	MS339C-3-3XL	

LIME CLASS 3 SAFETY VEST		
MS539C-3-L	MS539C-3-2XL	MS539C-3-4XL
MS539C-3-XL	MS539C-3-3XL	



NEW DOT STYLE CLASS 2 SAFETY VESTS

- ANSI/ISEA 107-2004 Class 2
- 100% Polyester
- Open weave mesh
- Zipper front closure
- Adjustable sides
- 4.5" wide tape with 2" wide reflective stripes
- Large radio pocket w/mic. or badge tab
- Individual chest pockets for pens and tools
- 2 inside pockets
- Size: S-5XL

LIME CLASS 2 SAFETY VEST	
DS525C-2-S/M	DS525C-2-2/3XL
DS525C-2-L/XL	DS525C-2-4/5XL



SAFETY VEST RATINGS:

- 1** To be used in low speed environments - where vehicles are not exceeding 25 MPH.
- 2** Environments where vehicle speeds are in the 25-55 MPH range.
- 3** Environments where vehicle speeds are in excess of 55 MPH