



00170



00159



00163



00169



COMMERCIAL SERVICE BOOSTER CABLES

Cables are made of 4 gauge 100% copper conductors. Tough PVC insulation, color-coded tangle-free dual cable construction.

Part #	Gauge	Length	Clamp	Color	Packaging	Master Carton	
						Quantity	Weight
00159 ¹	4	20'	500G	Black/White	Retail Box	4	38 lbs.
00163 ¹	4	20'	600P	Black/White	Retail Box	4	40 lbs.
00170 ¹	4	16'	500G	Black/White	Retail Box	4	33 lbs.
00337 ¹	4	16'	600P	Black/White	Retail Box	4	34 lbs.
00164 ¹	4	12'	500G	Black/White	Retail Box	4	28 lbs.

¹Includes storage bag
 • English and Spanish

⚠ WARNING: Cancer and Reproductive Harm www.P65Warnings.ca.gov

HEAVY SERVICE BOOSTER CABLES

Cables are made of 6 gauge 100% copper conductors. Tough PVC insulation, color-coded tangle-free dual cable construction.

Part #	Gauge	Length	Clamp	Color	Packaging	Master Carton	
						Quantity	Weight
00162 ¹	6	12'	500G	Black/Orange	Retail Box	6	33 lbs.
00169 ¹	6	16'	500G	Black/Orange	Retail Box	6	37 lbs.

¹Includes storage bag
 • English and Spanish

⚠ WARNING: Cancer and Reproductive Harm www.P65Warnings.ca.gov





00160



00168

MEDIUM SERVICE BOOSTER CABLES

Cables are made of 8 gauge 100% copper conductors. Tough PVC insulation, color-coded tangle-free dual cable construction.

Part #	Gauge	Length	Clamp	Color	Packaging	Master Carton	
						Quantity	Weight
00160 ¹	8	12'	500G	Black/Yellow	Retail Box	6	27 lbs.
00168 [▲]	8	12'	200C	Black/Yellow	Storage Bag	12	37 lbs.

- ¹Includes storage bag
- English and Spanish
- ▲ English, French, and Spanish

▲ WARNING: Cancer and Reproductive Harm www.P65Warnings.ca.gov



00153

00146

STANDARD SERVICE BOOSTER CABLES

Cables are made of 10 gauge 100% copper conductors. Tough PVC insulation with tangle-free dual cable and color-coded clamps.

Part #	Gauge	Length	Clamp	Color	Packaging	Master Carton	
						Quantity	Weight
00146 ^{▲2}	10	10'	50A	Yellow/Yellow	Storage Bag	12	16 lbs.
00153 [▲]	10	12'	200C	Black/Black	Sleeve	12	27 lbs.

- ²Used for small engine/motorcycle service
- ▲ English, French, and Spanish

▲ WARNING: Cancer and Reproductive Harm www.P65Warnings.ca.gov



04848

04955

04850

04851

04852

COPPER CLAD ALUMINUM BOOSTER CABLES

Tough PVC insulation, color-coded tangle-free dual cable construction.



BSB1

Part #	Gauge	Length	Clamp	Color	Packaging	Master Carton	
						Quantity	Weight
04369 ^{●1}	2	20'	600P	Red/Black	Retail Box	4	36 lbs.
04848 [▲]	2	20'	600P	Red/Black	Retail Box	4	34 lbs.
04370 [●]	4	20'	500G	White/Black	Retail Box	4	36 lbs.
04955 [▲]	4	20'	400B	Red/Black	Retail Box	4	22 lbs.
04850 [▲]	6	16'	400B	Red/Black	Retail Box	6	23 lbs.
04851 [▲]	8	12'	400B	Red/Black	Retail Box	6	15 lbs.
04852 [▲]	10	12'	200C	Red/Black	Sleeve	12	21 lbs.
00179 [▲]	10	12'	200C	Black/Black	Storage Bag	12	21 lbs.

- ¹Includes storage bag
- English and Spanish
- ▲ English, French, and Spanish

▲ WARNING: Cancer and Reproductive Harm www.P65Warnings.ca.gov

BOOSTER CABLE STORAGE BAG

All PVC with zipper closure.

Part #	Packaging	Master Carton		Dimensions	
		Quantity	Weight	Diameter	Thickness
BSB1	Bulk	10	5 lbs.	13.5"	1.75"

▲ WARNING: Cancer and Reproductive Harm www.P65Warnings.ca.gov



PLUG CONNECTOR BOOSTER CABLES

Cables are made of 100% copper conductors.

- 03667 consists of a 5' battery connector cable with plug connector and 15' cable with clamps.
- 04665 consists of a 5' battery connector cable with plug connector and 25' cable with clamps.
- Connector cable allows for easy access to battery power without opening the hood of charging vehicle.
- Clamp-end cable allows stranded vehicle to be easily reached.
- Tough PVC insulation, color-coded tangle free dual cable construction.
- Comes equipped with plug cover to prevent damage to plug when not in use.
- Clamp and jaw designed for 3 jump starting applications: top post, side terminal, and remote battery access terminal.
- Instructions included.

Part #	Gauge	Length	Clamp	Color	Packaging	Master Carton	
						Quantity	Weight
03667	4	20'	500G	Black/White	Retail Box	1	18 lbs.
04665	2	30'	600E	Black/Red	Retail Box	1	39 lbs.
04890	4	5'	—	Black/White	Retail Box	1	2 lbs.
04891	2	5'	—	Black/Red	Retail Box	1	3 lbs.

⚠ WARNING: Cancer and Reproductive Harm www.P65Warnings.ca.gov



03667



04665



04890



04891

PLUG CONNECTOR COVER

- Cover prevents damage to plug when not in use.
- Fits 175A connectors, used on the above cables sets.



Part #	Color	Packaging	Master Carton	
			Quantity	Weight
31120	Black	Box of 4	1	1 lb.

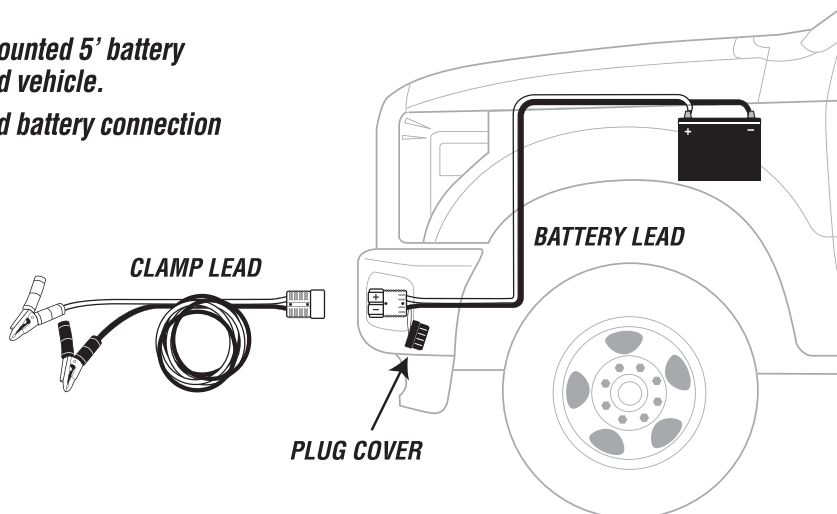
⚠ WARNING: Cancer www.P65Warnings.ca.gov

IDEAL FOR SERVICE & FLEET EQUIPMENT

Allows mounting on service vehicle, using the 5' battery connection cable.

Simply plug the clamp cable into the mounted 5' battery connection cable to service the stranded vehicle.

Plug cover prevents damage to mounted battery connection cable plug when not in use.



ROADSIDE EMERGENCY KITS

BASIC KIT

Safety Kit Includes:

- Storage Case with Storage Velcro
- Booster Cable (8ft. 10ga.)
- Tow Strap (12ft. 1500lb. work load)
- Flashlight & 2 Batteries
- Rain Poncho & Gloves
- SOS/Help Sign
- First Aid Kit



31051

PREMIUM KIT

Premium Safety Kit Includes:

- Storage Case with Storage Velcro
- Booster Cable (8ft. 10ga.)
- Tow Strap (12ft. 1500lb. work load)
- Safety Triangle
- 7 LED Headlamp & 3 Batteries
- Blanket
- Rain Poncho & Gloves
- SOS/Help Sign
- First Aid Kit



31052



Part #	Kit Type	Packaging	Master Carton	
			Quantity	Weight
31051	Basic	Bag	4	17 lbs.
31052	Premium	Bag	4	21 lbs.

⚠ WARNING: Cancer and Reproductive Harm www.P65Warnings.ca.gov



00184



00182



08756

Booster cable clamps are designed to grip securely to side terminal, post terminal batteries, and remote battery access terminals for maximum current carrying capacity. All booster cable clamps are color coded (Red/Black) for safety and visual appeal.

1000C 100% COPPER CLAMP

- For use with 1ga, 1/0ga, and 2/0ga cable

600P EXTRA HEAVY-DUTY CLAMP

Parrot Type

- For use with 2ga and 4ga cable

500G PVC COATED STEEL HEAVY-DUTY CLAMP

- For use with 4ga, 6ga and 8ga cable

500E PVC COATED STEEL HEAVY-DUTY CLAMP

E-Z Reach™ Type

- For use with 4ga, 6ga and 8ga cable

200C COPPER-PLATED STEEL CLAMP

Crimp Type

- For use with 8ga and 10ga cable



Part #	Packaging	Insulation Color	Master Carton	
			Quantity	Weight
08756	Clam Shell of 2	Red/Black	2	4 lbs.

WARNING: Cancer and Reproductive Harm www.P65Warnings.ca.gov

Part #	Packaging	Insulation Color	Master Carton	
			Quantity	Weight
00184	Clam Shell of 2	Red/Black	2	2 lbs.
06137	Bulk	Red	10	5 lbs.
06138	Bulk	Black	10	5 lbs.

WARNING: Cancer and Reproductive Harm www.P65Warnings.ca.gov

Part #	Packaging	Insulation Color	Master Carton	
			Quantity	Weight
06125	Clam Shell of 2	Red/Black	10	8 lbs.

WARNING: Cancer and Reproductive Harm www.P65Warnings.ca.gov

Part #	Packaging	Insulation Color	Master Carton	
			Quantity	Weight
00182	Clam Shell of 2	Red/Black	10	9 lbs.
06139	Bulk	Red	10	5 lbs.
06140	Bulk	Black	10	5 lbs.

WARNING: Cancer and Reproductive Harm www.P65Warnings.ca.gov

Part #	Packaging	Insulation Color	Master Carton	
			Quantity	Weight
00335	Card of 10	Red/Black	2	4 lbs.
08762	Clam Shell of 2	Red/Black	10	3 lbs.
08763	Bulk	Red	10	2 lbs.
08764	Bulk	Black	10	2 lbs.

WARNING: Cancer and Reproductive Harm www.P65Warnings.ca.gov

TESTING AND SPECIALTY CLAMPS

50A CLAMP

Clamp for battery chargers, tune up and test equipment



JAW TYPE CLAMP

Available in 10, 25, and 50 amp



10 AMP ALLIGATOR CLAMP

Crimp Type



Part #	Packaging	Insulation Color	Master Carton	
			Quantity	Weight
00181	Card of 2	Red/Black	10	2 lbs.
00336	Card of 10	Red/Black	5	4 lbs.
06143	Bulk	Red	100	7 lbs.
06144	Bulk	Black	100	7 lbs.

WARNING: Cancer and Reproductive Harm www.P65Warnings.ca.gov

Part #	Type	Packaging	Master Carton	
			Quantity	Weight
00448	10 Amp	Clam Shell of 2	10	1 lb.
06146	10 Amp	Bulk	50	1 lb.
00503	25 Amp	Clam Shell of 1	10	1 lb.
06147	25 Amp	Bulk	25	1 lb.
00504	50 Amp	Clam Shell of 2	10	1 lb.
06148	50 Amp	Bulk	10	1 lb.

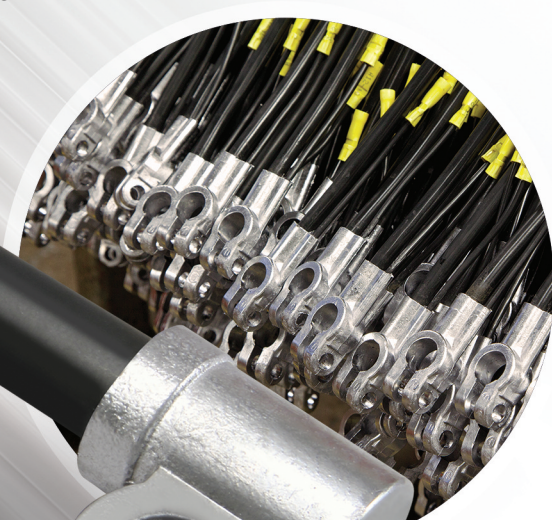
Part #	Packaging	Master Carton	
		Quantity	Weight
00505	Clam Shell of 2	10	1 lb.
06145	Bulk	100	1 lb.



Battery Cables

visit www.dekacatalog.com
for application info

Battery cables are made of 100% copper conductor for maximum current flow. Gravity cast terminals are non-porous and made with 100% recycled lead. Lead is recognized as the premium choice in battery cable terminal construction because of its maximum current flow carrying ability, malleability, and corrosion resistance. Full gauge stranded copper core is flexible for easy installation and allows maximum current for quick starting. Copper core extends to the end of the plated lug to give a one piece solid connection. Wire meets SAE standards.



**100%
RECYCLED
ALLOY**

ALL EAST PENN MANUFACTURED
LEAD PRODUCTS ARE BUILT WITH
100% RECYCLED LEAD ALLOY.

- Packaged Battery Cables
- Bulk Battery Cables
- Specialty Cables
- Quick Connect™ Splices
- See page 110 for custom cable information

PACKAGED BATTERY CABLES

ALL BATTERY CABLES ARE PACKAGED ONE PER CLAMSHELL

6 GAUGE LAWN & GARDEN SWITCH-TO-STARTER CABLES

Fits up to 5/16" stud



4 GAUGE TOP POST BATTERY CABLES

- Auxiliary leads are 4" long, 12 gauge

- Bolt and nut included

Fits up to 3/8" stud



4 GAUGE SWITCH-TO-STARTER CABLES

- Recommended for engine to ground connections

Fits up to 3/8" stud



Part #	Color	Length	Master Carton	
			Quantity	Weight
00679	Black	19"	5	1 lbs.
00680	Black	43"	5	3 lbs.
00681	Black	49"	5	3 lbs.

WARNING: Cancer and Reproductive Harm www.P65Warnings.ca.gov

Part #	Color	Length	Leads	Master Carton	
				Quantity	Weight
00784	Black	10"	0	5	3 lbs.
00292	Red	10"	0	5	3 lbs.
00785	Black	15"	0	5	3 lbs.
00293	Red	15"	0	5	3 lbs.
00801	Black	20"	0	5	4 lbs.
00294	Red	20"	0	5	4 lbs.
00802	Black	25"	1	5	4 lbs.
00295	Red	25"	1	5	4 lbs.
00803	Black	32"	1	5	5 lbs.
00296	Red	32"	1	5	5 lbs.
00804	Black	38"	1	5	5 lbs.
00297	Red	38"	1	5	5 lbs.
00805	Black	43"	1	5	5 lbs.
00298	Red	43"	1	5	5 lbs.
00808	Black	48"	1	5	6 lbs.
00299	Red	48"	1	5	6 lbs.
00809	Black	56"	1	5	6 lbs.
00328	Red	56"	1	5	6 lbs.
00810	Black	72"	1	5	6 lbs.
00329	Red	72"	1	5	6 lbs.

WARNING: Cancer and Reproductive Harm www.P65Warnings.ca.gov

Part #	Color	Length	Master Carton	
			Quantity	Weight
00286	Red	16"	5	2 lbs.
00287	Red	18"	5	2 lbs.
00288	Red	24"	5	2 lbs.
00289	Red	32"	5	3 lbs.
00282	Red	40"	5	3 lbs.
00291	Red	49"	5	4 lbs.

WARNING: Cancer and Reproductive Harm www.P65Warnings.ca.gov



4 GAUGE SIDE TERMINAL BATTERY CABLES

- Auxiliary leads are 4" long, 12 gauge
 - Bolt included
 - Fits side terminal battery
- Fits up to 3/8" stud**



Part #	Color	Length	Leads	Master Carton	
				Quantity	Weight
00813	Black	20"	1	5	3 lbs.
00330	Red	20"	1	5	3 lbs.
00308	Black	25"	1	5	4 lbs.
00302	Red	25"	1	5	4 lbs.
00875	Black	30"	1	5	4 lbs.
00331	Red	30"	1	5	4 lbs.
00309	Black	35"	1	5	4 lbs.
00303	Red	35"	1	5	4 lbs.
00876	Black	40"	1	5	5 lbs.
00332	Red	40"	1	5	5 lbs.
00310	Black	45"	1	5	5 lbs.
00305	Red	45"	1	5	5 lbs.
00897	Black	50"	1	5	5 lbs.
00333	Red	50"	1	5	5 lbs.
00345	Black	55"	1	5	6 lbs.
00306	Red	55"	1	5	6 lbs.
00300	Black	65"	1	5	6 lbs.
00240	Red	65"	1	5	6 lbs.
00360	Black	78"	1	5	7 lbs.
00307	Red	78"	1	5	7 lbs.

⚠ WARNING: Cancer and Reproductive Harm www.P65Warnings.ca.gov

2 GAUGE TOP POST BATTERY CABLES

- Auxiliary leads are 4" long, 12 gauge
 - Bolt and nut included
- Fits up to 3/8" stud**



Part #	Color	Length	Leads	Master Carton	
				Quantity	Weight
00365	Red	10"	0	5	3 lbs.
03068	Red	15"	0	5	4 lbs.
04056	Red	20"	0	5	4 lbs.
00173	Red	25"	1	5	5 lbs.
00339	Red	32"	1	5	5 lbs.
00174	Red	38"	1	5	6 lbs.
00176	Red	43"	1	5	7 lbs.
00177	Red	48"	1	5	7 lbs.

⚠ WARNING: Cancer and Reproductive Harm www.P65Warnings.ca.gov

2 GAUGE SWITCH-TO-STARTER CABLES

- Recommended for engine to ground connections
- Fits up to 3/8" stud**



Part #	Color	Length	Master Carton	
			Quantity	Weight
00363	Red	16"	5	3 lbs.
00371	Red	18"	5	3 lbs.
00178	Red	24"	5	3 lbs.
00372	Red	32"	5	4 lbs.
00377	Red	40"	5	5 lbs.
00180	Red	49"	5	6 lbs.

⚠ WARNING: Cancer and Reproductive Harm www.P65Warnings.ca.gov

PACKAGED BATTERY CABLES (CONTINUED)

ALL BATTERY CABLES ARE PACKAGED ONE PER CLAMSHELL

4 GAUGE BRAIDED GROUND STRAPS

- Tin-plated copper
- Maximum protection against corrosion for farm, commercial vehicles, and off-road applications

Fits up to 3/8" stud



Part #	Length	Master Carton	
		Quantity	Weight
00301	9"	5	3 lbs.
00364	14"	5	3 lbs.

⚠ WARNING: Cancer and Reproductive Harm www.P65Warnings.ca.gov

2/0 GAUGE TOP STUD STACKABLE BATTERY CABLES

- Made with welding cable

For Group 31 stud batteries
Fits up to 3/8" stud



Part #	Color	Length	Master Carton	
			Quantity	Weight
08757	Black	9"	5	3 lbs.
08758	Black	15"	5	4 lbs.

⚠ WARNING: Cancer and Reproductive Harm www.P65Warnings.ca.gov

QUICK CONNECT® BATTERY CABLE REPAIR SPLICES

- For fast convenient replacement of hard to reach cables
- Replaces corroded portion, not the entire cable
- Ideal for automotive, truck, and farm applications
- RoHS Compliant
- Includes hex wrench
- See inside back cover for more details



Part #	Color	Gauge	Type	Aux. Wire Gauge/Color	Master Carton	
					Quantity	Weight
07671	Black	2	DIN	10/Blk	5	3 lbs.
07672	Black	2	DIN, Dual	10/Blk	5	3 lbs.
08859	Black	4	Lug-Dual	12/Blk	5	4 lbs.
08863	Black	4	Side-Dual	12/Blk	5	4 lbs.
08864	Black	4	Top-Dual	12/Blk	5	4 lbs.
08865	Black	4	Top	12/Blk, 10/Red	5	3 lbs.
08866	Black	4	Side	12/Blk, 10/Red	5	3 lbs.
08867	Black	1	Top	10/Blk, 8/Red	5	3 lbs.
08868	Black	1	Side	10/Blk, 8/Red	5	3 lbs.
08869	Black	4	Lug	12/Blk, 10/Red	5	3 lbs.

⚠ WARNING: Cancer and Reproductive Harm www.P65Warnings.ca.gov

07671 07672 08859 08863 08864 08865 08866 08867 08868 08869



QUICK CONNECT® HEAVY DUTY BATTERY CABLE REPAIR SPLICES

- Ideal for commercial applications
- Replaces worn out cable and extends cable length
- Dual set screws for secure connection
- Includes hex wrench



Part #	Color	Gauge	Type	Master Carton	
				Quantity	Weight
04957	Black	2/0	Universal Top	5	4 lbs.
04958	Black	2/0	Lug - 3/8"	5	3 lbs.
04963	Black	2/0	Overmolded - 3/8"	5	4 lbs.

⚠ WARNING: Cancer and Reproductive Harm www.P65Warnings.ca.gov

04957 04958 04963



CUSTOM BUILD UTILITY BATTERY CABLE KIT

- Kit includes 6' of 8 gauge cable w/ four 5/16" lugs
- Custom build battery cables for garden tractors, snowmobiles, and ATVs



Part #	Master Carton	
	Quantity	Weight
00131	12	3 lbs.

WARNING: Cancer and Reproductive Harm www.P65Warnings.ca.gov

BULK BATTERY CABLES

4 GAUGE TOP POST BATTERY CABLES

- Auxiliary leads are 4" long, 12 gauge
- Bolt and nut included

Fits up to 3/8" stud



4 Gauge Part #	Color	Length	Leads	Master Carton	
				Quantity	Weight
04153	Black	10"	0	10	5 lbs.
04138	Red	10"	0	10	5 lbs.
04184	Black	10"	1	10	5 lbs.
04168	Red	10"	1	10	5 lbs.
04154	Black	12"	0	10	5 lbs.
04139	Red	12"	0	10	5 lbs.
04185	Black	12"	1	10	5 lbs.
04169	Red	12"	1	10	5 lbs.
04155	Black	15"	0	10	5 lbs.
04140	Red	15"	0	10	5 lbs.
04186	Black	15"	1	10	5 lbs.
04170	Red	15"	1	10	5 lbs.
04156	Black	20"	0	10	6 lbs.
04141	Red	20"	0	10	6 lbs.
04187	Black	20"	1	10	6 lbs.
04171	Red	20"	1	10	6 lbs.
04157	Black	25"	0	10	7 lbs.
04142	Red	25"	0	10	7 lbs.
04188	Black	25"	1	10	7 lbs.
04172	Red	25"	1	10	7 lbs.
04158	Black	27"	0	10	7 lbs.
04143	Red	27"	0	10	7 lbs.
04189	Black	27"	1	10	7 lbs.
04173	Red	27"	1	10	7 lbs.
04159	Black	32"	0	10	8 lbs.
04144	Red	32"	0	10	8 lbs.
04190	Black	32"	1	10	8 lbs.
04174	Red	32"	1	10	8 lbs.
04160	Black	34"	0	10	8 lbs.
04145	Red	34"	0	10	8 lbs.
04191	Black	34"	1	10	8 lbs.
04175	Red	34"	1	10	8 lbs.
04161	Black	38"	0	10	9 lbs.
04146	Red	38"	0	10	9 lbs.
04192	Black	38"	1	10	9 lbs.
04176	Red	38"	1	10	9 lbs.
04162	Black	43"	0	10	9 lbs.
04147	Red	43"	0	10	9 lbs.
04193	Black	43"	1	10	9 lbs.
04177	Red	43"	1	10	9 lbs.
04163	Black	48"	0	10	10 lbs.
04148	Red	48"	0	10	10 lbs.
04194	Black	48"	1	10	10 lbs.
04178	Red	48"	1	10	10 lbs.
04164	Black	53"	0	10	10 lbs.
04149	Red	53"	0	10	10 lbs.
04195	Black	53"	1	10	10 lbs.
04179	Red	53"	1	10	10 lbs.
04165	Black	56"	0	10	11 lbs.
04150	Red	56"	0	10	11 lbs.

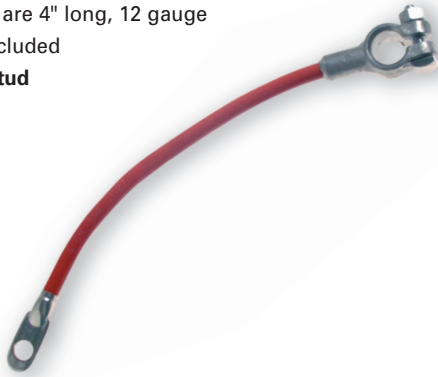
WARNING: Cancer and Reproductive Harm www.P65Warnings.ca.gov

BULK BATTERY CABLES (CONTINUED)

4 GAUGE TOP POST BATTERY CABLES (CONT.)

- Auxiliary leads are 4" long, 12 gauge
- Bolt and nut included

Fits up to 3/8" stud



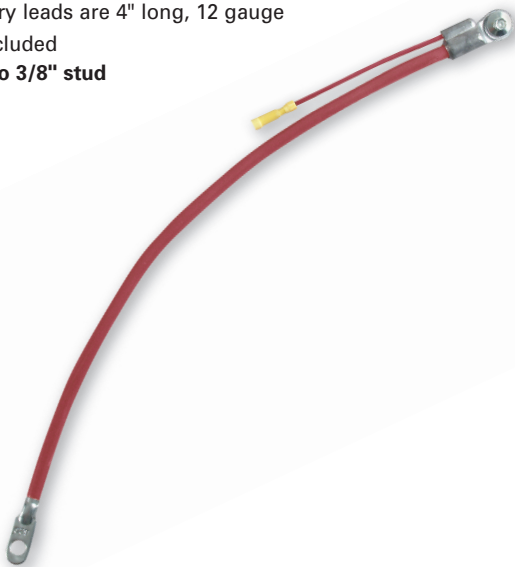
4 Gauge Part #	Color	Length	Leads	Master Carton	
				Quantity	Weight
04196	Black	56"	1	10	11 lbs.
04180	Red	56"	1	10	11 lbs.
04166	Black	65"	0	10	11 lbs.
04151	Red	65"	0	10	11 lbs.
04197	Black	65"	1	10	12 lbs.
04181	Red	65"	1	10	12 lbs.
04167	Black	72"	0	10	13 lbs.
04152	Red	72"	0	10	13 lbs.
04198	Black	72"	1	10	13 lbs.
04182	Red	72"	1	10	13 lbs.
04199	Black	78"	1	10	14 lbs.
04183	Red	78"	1	10	14 lbs.

WARNING: Cancer and Reproductive Harm www.P65Warnings.ca.gov

4 GAUGE SIDE TERMINAL BATTERY CABLES

- Auxiliary leads are 4" long, 12 gauge
- Bolt included

Fits up to 3/8" stud



4 Gauge Part #	Color	Length	Leads	Master Carton	
				Quantity	Weight
04266	Black	20"	1	10	6 lbs.
04256	Red	20"	1	10	6 lbs.
04267	Black	25"	1	10	6 lbs.
04257	Red	25"	1	10	6 lbs.
04268	Black	30"	1	10	7 lbs.
04258	Red	30"	1	10	7 lbs.
04269	Black	35"	1	10	7 lbs.
04259	Red	35"	1	10	7 lbs.
04270	Black	40"	1	10	8 lbs.
04260	Red	40"	1	10	8 lbs.
04271	Black	45"	1	10	9 lbs.
04261	Red	45"	1	10	9 lbs.
04272	Black	50"	1	10	9 lbs.
04262	Red	50"	1	10	9 lbs.
04273	Black	55"	1	10	10 lbs.
04263	Red	55"	1	10	10 lbs.
04274	Black	65"	1	10	11 lbs.
04264	Red	65"	1	10	11 lbs.

WARNING: Cancer and Reproductive Harm www.P65Warnings.ca.gov

4 GAUGE SWITCH-TO-STARTER CABLES

- Recommended for engine to ground connections

Fits up to 3/8" stud



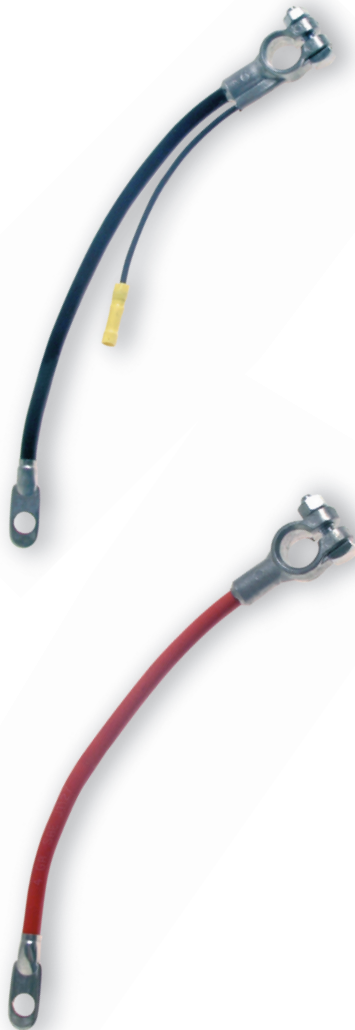
4 Gauge Part #	Color	Length	Master Carton	
			Quantity	Weight
04282	Black	16"	10	4 lbs.
04276	Red	16"	10	4 lbs.
04283	Black	18"	10	4 lbs.
04277	Red	18"	10	4 lbs.
04284	Black	24"	10	4 lbs.
04278	Red	24"	10	4 lbs.
04285	Black	32"	10	5 lbs.
04279	Red	32"	10	5 lbs.
04286	Black	40"	10	6 lbs.
04280	Red	40"	10	6 lbs.
04287	Black	49"	10	7 lbs.
04281	Red	49"	10	7 lbs.

WARNING: Cancer and Reproductive Harm www.P65Warnings.ca.gov

2 GAUGE TOP POST BATTERY CABLES

- Auxiliary leads are 4" long, 12 gauge
- Bolt and nut included

Fits up to 3/8" stud



2 Gauge Part #	Color	Length	Leads	Master Carton	
				Quantity	Weight
04214	Black	10"	0	10	6 lbs.
04200	Red	10"	0	10	6 lbs.
04242	Black	10"	1	10	6 lbs.
04228	Red	10"	1	10	6 lbs.
04215	Black	15"	0	10	7 lbs.
04201	Red	15"	0	10	7 lbs.
04243	Black	15"	1	10	7 lbs.
04229	Red	15"	1	10	7 lbs.
04216	Black	20"	0	10	7 lbs.
04202	Red	20"	0	10	7 lbs.
04244	Black	20"	1	10	7 lbs.
04230	Red	20"	1	10	7 lbs.
04217	Black	23"	0	10	8 lbs.
04203	Red	23"	0	10	8 lbs.
04245	Black	25"	1	10	9 lbs.
04231	Red	25"	1	10	9 lbs.
04218	Black	27"	0	10	9 lbs.
04204	Red	27"	0	10	9 lbs.
04219	Black	32"	0	10	10 lbs.
04205	Red	32"	0	10	10 lbs.
04247	Black	32"	1	10	10 lbs.
04233	Red	32"	1	10	10 lbs.
04220	Black	34"	0	10	11 lbs.
04206	Red	34"	0	10	11 lbs.
04221	Black	38"	0	10	12 lbs.
04207	Red	38"	0	10	12 lbs.
04249	Black	38"	1	10	12 lbs.
04235	Red	38"	1	10	12 lbs.
04222	Black	43"	0	10	13 lbs.
04208	Red	43"	0	10	13 lbs.
04250	Black	43"	1	10	13 lbs.
04236	Red	43"	1	10	13 lbs.
04223	Black	48"	0	10	14 lbs.
04209	Red	48"	0	10	14 lbs.
04251	Black	48"	1	10	14 lbs.
04237	Red	48"	1	10	14 lbs.
04224	Black	53"	0	10	15 lbs.
04210	Red	53"	0	10	15 lbs.
04225	Black	58"	0	10	16 lbs.
04211	Red	58"	0	10	16 lbs.
04253	Black	58"	1	10	16 lbs.
04239	Red	58"	1	10	16 lbs.
04226	Black	65"	0	10	17 lbs.
04212	Red	65"	0	10	17 lbs.
04254	Black	65"	1	10	17 lbs.
04240	Red	65"	1	10	17 lbs.
04227	Black	72"	0	10	18 lbs.
04213	Red	72"	0	10	18 lbs.
04255	Black	72"	1	10	18 lbs.
04241	Red	72"	1	10	18 lbs.

WARNING: Cancer and Reproductive Harm www.P65Warnings.ca.gov

2 GAUGE SWITCH-TO-STARTER CABLES

- Recommended for engine to ground connections

Fits up to 3/8" stud



2 Gauge Part #	Color	Length	Master Carton	
			Quantity	Weight
04294	Black	16"	10	6 lbs.
04288	Red	16"	10	6 lbs.
04295	Black	18"	10	6 lbs.
04289	Red	18"	10	6 lbs.
04296	Black	24"	10	7 lbs.
04290	Red	24"	10	7 lbs.
04297	Black	32"	10	8 lbs.
04291	Red	32"	10	8 lbs.
04298	Black	40"	10	9 lbs.
04292	Red	40"	10	9 lbs.
04299	Black	49"	10	10 lbs.
04293	Red	49"	10	10 lbs.

WARNING: Cancer and Reproductive Harm www.P65Warnings.ca.gov

JUMPER CABLES

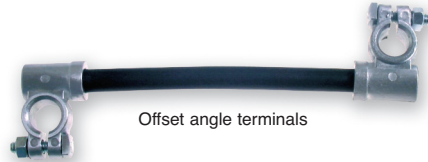
- Made with welding cable
- For series hook-up



Straight terminals



Same-side terminals



Offset angle terminals

Part #	Color	Gauge	Length	Master Carton	
				Quantity	Weight
Straight Terminals					
04302	Black	1	8"	6	8 lbs.
04303	Black	1	12"	6	8 lbs.
04309	Black	2/0	8"	6	8 lbs.
04310	Black	2/0	12"	6	8 lbs.
04311	Black	2/0	19"	6	10 lbs.
Same Side Terminals					
04304	Black	1	8"	6	8 lbs.
04305	Black	1	12"	6	9 lbs.
04312	Black	2/0	8"	6	8 lbs.
04313	Black	2/0	12"	6	9 lbs.
04314	Black	2/0	19"	6	12 lbs.
Offset Angle Terminals					
04300	Black	1	8"	6	8 lbs.
04301	Black	1	12"	6	9 lbs.
04306	Black	2/0	8"	6	8 lbs.
04307	Black	2/0	12"	6	9 lbs.
04308	Black	2/0	19"	6	11 lbs.

⚠ WARNING: Cancer and Reproductive Harm www.P65Warnings.ca.gov

6 GAUGE GOLF CAR CABLES

Lug To Lug Style

- Lugs are tin-plated copper to fit 5/16" stud



Part #	Color	Length	Master Carton	
			Quantity	Weight
31104	Black	9"	50	5 lbs.
31105	Red	9"	50	5 lbs.
31106	Black	12"	50	6 lbs.
31107	Red	12"	50	6 lbs.
31108	Black	14"	50	7 lbs.
31109	Red	14"	50	7 lbs.
31110	Black	16"	50	8 lbs.
31111	Red	16"	50	8 lbs.
31112	Black	18"	50	9 lbs.
31113	Red	18"	50	9 lbs.
31114	Black	20"	50	10 lbs.
31115	Red	20"	50	10 lbs.
31116	Black	21"	50	10 lbs.
31117	Red	21"	50	10 lbs.
31118	Black	23"	50	11 lbs.
31119	Red	23"	50	11 lbs.

⚠ WARNING: Cancer and Reproductive Harm www.P65Warnings.ca.gov

6 GAUGE GOLF CAR JUMPER CABLES

Top Post Style

- For series hook up



Lug To Lug Style

- Lugs are tin-plated copper to fit 5/16" stud



Part #	Color	Length	Master Carton	
			Quantity	Weight
Top Post Jumpers				
03327	Black	9"	10	6 lbs.
04327	Red	9"	10	6 lbs.
03328	Black	12"	10	7 lbs.
04328	Red	12"	10	7 lbs.
Stud Terminal Jumpers				
03332	Black	9"	10	1 lb.
04332	Red	9"	10	1 lb.
03333	Black	12"	10	2 lbs.
04333	Red	12"	10	2 lbs.
03334	Black	20"	10	2 lbs.
04334	Red	20"	10	2 lbs.

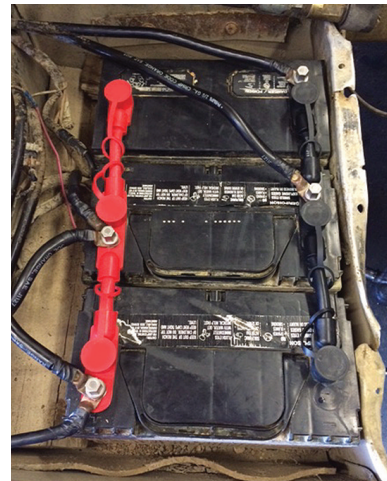
⚠ WARNING: Cancer and Reproductive Harm www.P65Warnings.ca.gov

IN FOCUS: Overmolded Cable Assemblies and Accessories

Battery systems can be extremely hard to maintain and service without having the right connections. Our Overmolded Cable Assemblies streamline battery connections with a secure and safe fit. Exposed connections are significantly reduced to minimize the formation of corrosion. Accessories complement our cable assemblies to help further service battery connection needs.



Before



After



Group 31 Multi-Battery Overmolded Cable Assembly

- Made with 2/0 PVC starter cable
- Attached protective caps to seal connection
- Fits up to 3/8" stud
- Packaged for retail in bag with header card

- 2-Battery, Red, 7", 04362
- 2-Battery, Black, 7", 04363
- 3-Battery, Red, 14", 04364
- 3-Battery, Black, 14", 04365
- 4-Battery, Red, 21", 04662
- 4-Battery, Black, 21", 04663

Warning & Information on page 22



Group 31 Closed Top Nuts 00574 card of 1

- 3/8" - 16 unc thread and 9/16" hex head
- Stainless steel sintered material
- Fits Group 31 overmolded cable assemblies

Information on page 31



Protective Stud Caps, Red 04892 bag of 10

- Fits 3/8" stud
- Helps protect against corrosion
- Fits group 31 overmolded cable assemblies

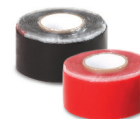
Warning & Information on page 45



Protective Stud Caps, Black 04893 bag of 10

- Fits 3/8" stud
- Helps protect against corrosion
- Fits group 31 overmolded cable assemblies

Warning & Information on page 45



Self Fusing Auto Tape 04366 box of 4 (2 red, 2 blk) 04367 Black, card of 1 04368 Rd, card of 1

- Provides a moisture tight seal
- Insulates to protect wires and splices
- Ideal for high temperature applications
- Alternative to heat shrink tubing

Information on page 42

2/0 GAUGE TOP STUD STACKABLE BATTERY CABLES

- Made with welding cable

**For Group 31
stud batteries**

Fits up to 3/8" stud



Part #	Color	Length	Master Carton	
			Quantity	Weight
04315	Black	7"	6	3 lbs.
01484	Red	7"	6	3 lbs.
08754	Black	9"	6	3 lbs.
04316	Black	13"	6	4 lbs.
01485	Red	13"	6	4 lbs.
08755	Black	15"	6	4 lbs.

⚠ WARNING: Cancer and Reproductive Harm www.P65Warnings.ca.gov

2/0 GAUGE HARNESS ASSEMBLIES

- 04317 & 04318 include three hex serrated flange nuts and one charging post for 3/8" stud-type battery
- 04319 & 04320 include four hex serrated flange nuts and one charging post for 3/8" stud-type battery



Part #	Color	Length	Master Carton	
			Quantity	Weight
04317	Red	7"	1	1 lb.
04318	Black	7"	1	1 lb.
04319	Red	14"	1	2 lbs.
04320	Black	14"	1	2 lbs.

⚠ WARNING: Cancer and Reproductive Harm www.P65Warnings.ca.gov

OVERMOLDED HARNESS ASSEMBLIES

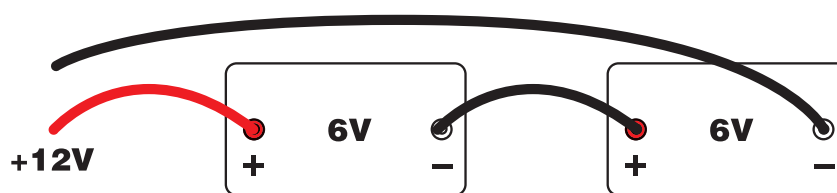
- Made with 2/0 PVC starter cable
- Attached protective caps to seal connection
- Fits up to 3/8" stud
- Use only the closed top nut (item 05419 or 00574) found on page 31 for the proper connection of these assemblies.



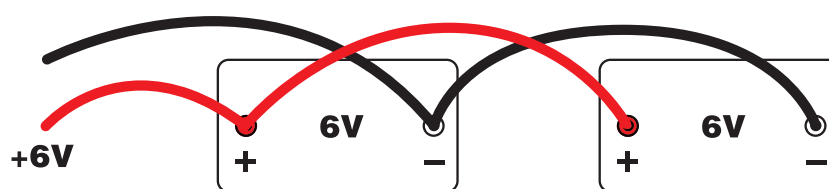
Part #	Color	Length	Master Carton	
			Quantity	Weight
04362	Red	7"	1	1 lb.
04363	Black	7"	1	1 lb.
04364	Red	14"	1	2 lbs.
04365	Black	14"	1	2 lbs.
04662	Red	21"	1	3 lbs.
04663	Black	21"	1	3 lbs.

⚠ WARNING: Cancer and Reproductive Harm www.P65Warnings.ca.gov

CONNECTING IN SERIES — double voltage, same capacity (Ah)



CONNECTING IN PARALLEL — same voltage, double capacity (Ah)



2/0 GAUGE FLEET BATTERY CABLES

- 1/2" stud hole size
- Made with PVC starter cable



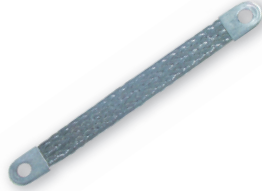
Part #	Color	Length	Master Carton	
			Quantity	Weight
04321	Black	12"	6	6 lbs.
04322	Black	24"	6	9 lbs.
04323	Black	36"	6	12 lbs.
04324	Black	48"	6	15 lbs.
04325	Black	60"	6	18 lbs.
04326	Black	72"	6	21 lbs.

WARNING: Cancer and Reproductive Harm www.P65Warnings.ca.gov

4 GAUGE BONDING STRAPS

Fits up to 3/8" stud

- Tin-plated copper
- Maximum protection against corrosion for farm, commercial vehicles, and off-road applications



Part #	Gauge	Length	Master Carton	
			Quantity	Weight
04353	4	8"	10	2 lbs.
04354	4	12"	10	2 lbs.

BRAIDED GROUND STRAPS

Fits up to 3/8" stud

- Tin-plated copper
- Maximum protection against corrosion for farm, commercial vehicles, and off-road applications



Part #	Gauge	Length	Master Carton	
			Quantity	Weight
04345	4	7"	10	4 lbs.
04346	4	9"	10	4 lbs.
04347	4	11"	10	5 lbs.
04348	4	14"	10	5 lbs.
04349	4	16"	10	5 lbs.
04350	4	19"	10	6 lbs.
04351	4	24"	10	7 lbs.
04352	4	27"	10	7 lbs.
04337	2	7"	10	5 lbs.
04338	2	9"	10	5 lbs.
04339	2	11"	10	6 lbs.
04340	2	14"	10	6 lbs.
04341	2	16"	10	7 lbs.
04342	2	19"	10	7 lbs.
04343	2	24"	10	8 lbs.
01051	2	26"	10	9 lbs.
04344	2	27"	10	9 lbs.

WARNING: Cancer and Reproductive Harm www.P65Warnings.ca.gov

12 GAUGE CUP STYLE CHARGING CABLE

- For group charging top post batteries



Part #	Color	Length	Master Carton	
			Quantity	Weight
04335	Black	15"	100	31 lbs.

WARNING: Cancer and Reproductive Harm www.P65Warnings.ca.gov

2/0 GAUGE FORD DIESEL HARNESS

- Fits Ford Diesel trucks w/ dual batteries (1987-present)
- Red cable w/ black loom



Part #	Color	Length	Master Carton	
			Quantity	Weight
04357	Red	116"	1	7 lbs.
00593	Red	123"	1	8 lbs.

WARNING: Cancer and Reproductive Harm www.P65Warnings.ca.gov

Terminals, Lugs, and Fasteners

East Penn cast terminals are manufactured with 100% recycled lead. Lead is recognized as the premium choice in battery cable terminals because of its maximum current carrying ability, malleability, and corrosion resistance.



**100%
RECYCLED
ALLOY**

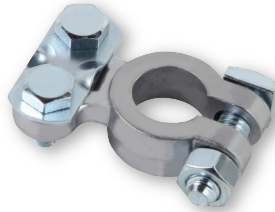
ALL EAST PENN MANUFACTURED
LEAD PRODUCTS ARE BUILT WITH
100% RECYCLED LEAD ALLOY.

- Terminals
- Fasteners
- Lugs
- Crimpable Terminals
- Industrial Plugs



**HEAVY-DUTY
TOP POST TERMINALS**

- Fits 6 to 1 gauge cables



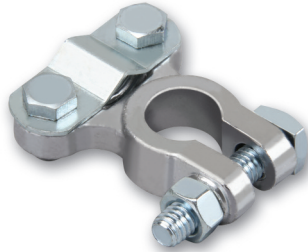
**HEAVY-DUTY
TOP POST
EPOXY COATED
TERMINALS**

- Fits 6 to 1 gauge cables



**HEAVY-DUTY
COMMERCIAL
TOP POST TERMINALS**

- Fits 2 to 4/0 gauge cables



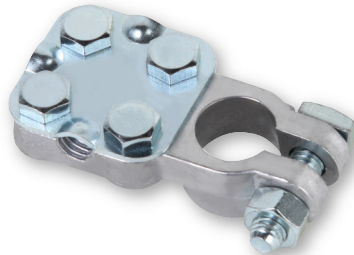
**HEAVY-DUTY
REPLACEMENT
SIDE TERMINAL**

- Fits 6 to 1 gauge cables



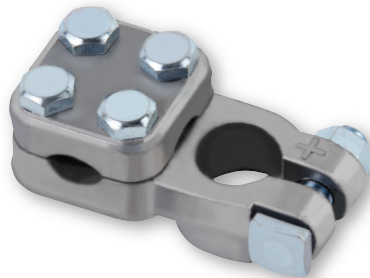
**3-WAY TOP POST
TERMINAL**

- Fits 6 to 1 gauge cables



**3-WAY TOP POST
COMMERCIAL
TERMINAL**

- Fits 2 to 4/0 gauge cables



Part #	Polarity	Packaging	Master Carton	
			Quantity	Weight
00350 ¹	Universal	Clam Shell of 1	24	7 lbs.
00147	Universal	Clam Shell of 2	24	14 lbs.
00369	Universal	Card of 10	10	27 lbs.
06079	Universal	Unbranded Card of 10	10	27 lbs.
05300	Universal	Bulk	100	27 lbs.

¹Hardware is bagged separately in clam shell

⚠ WARNING: Cancer and Reproductive Harm www.P65Warnings.ca.gov

Part #	Polarity	Packaging	Master Carton	
			Quantity	Weight
03067	1 Pos/1 Neg	Clam Shell of 2	10	7 lbs.
05305	Positive	Bulk - Red	50	14 lbs.
05306	Negative	Bulk - Black	50	14 lbs.

⚠ WARNING: Cancer and Reproductive Harm www.P65Warnings.ca.gov

Part #	Polarity	Packaging	Master Carton	
			Quantity	Weight
00366	Universal	Clam Shell of 1	10	6 lbs.
00370	Universal	Card of 10	6	31 lbs.
05301	Universal	Bulk	60	30 lbs.

⚠ WARNING: Cancer and Reproductive Harm www.P65Warnings.ca.gov

Part #	Polarity	Packaging	Master Carton	
			Quantity	Weight
00351 ²	Universal	Clam Shell of 1	24	5 lbs.
00192	Universal	Card of 8	10	21 lbs.
06080	Universal	Unbranded Card of 8	10	23 lbs.
05302 ¹	Universal	Bulk	50	12 lbs.
05303 ²	Universal	Bulk	50	14 lbs.

¹Order 3/8" bolt separately Part No. 05304

²Comes with 3/8" bolt, hardware is bagged separately

⚠ WARNING: Cancer and Reproductive Harm www.P65Warnings.ca.gov

Part #	Polarity	Packaging	Master Carton	
			Quantity	Weight
05439	Positive	Bulk	25	11 lbs.
05440	Negative	Bulk	25	11 lbs.
05443	1 Pos/1 Neg	Bag of 2	20	17 lbs.

⚠ WARNING: Cancer and Reproductive Harm www.P65Warnings.ca.gov

Part #	Polarity	Packaging	Master Carton	
			Quantity	Weight
1512137	Negative	Bulk	25	18 lbs.
1512138	Positive	Bulk	25	18 lbs.

⚠ WARNING: Cancer and Reproductive Harm www.P65Warnings.ca.gov





**GROUP 31
HEAVY DUTY
3-WAY TERMINAL**

- Fits 2 to 4/0 gauge cables
- Fits up to 3/8" stud



Part #	Polarity	Packaging	Master Carton	
			Quantity	Weight
31102	Universal	Box of 10	1	7 lbs.

⚠ WARNING: Cancer and Reproductive Harm www.P65Warnings.ca.gov

8D ADD-ON TERMINAL

- Will only fit East Penn 8D battery
- Converts top post SAE 8D battery to fit side connections
- 3/8"-16 stud terminal (3/4" length)
- Includes 6 zinc-plated steel attachment screws
- Should be tightened to 4-6 ft-lbs.



Part #	Polarity	Packaging	Master Carton	
			Quantity	Weight
31100	1 Pos/1 Neg	Bag of 2	1	3 lbs.

⚠ WARNING: Cancer and Reproductive Harm www.P65Warnings.ca.gov

**EPOXY-COATED
WING NUT TERMINALS**

- Clamp-type wing nut terminals convert standard post to marine or other special uses
- Brass plated wing nut
- Epoxy coating aids in polarity identification and corrosion resistance
- Positive terminal stud size is 3/8"
- Negative terminal stud size is 5/16"

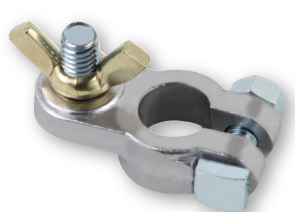


Part #	Polarity	Packaging	Master Carton	
			Quantity	Weight
00148	1 Pos/1 Neg	Clam Shell of 2	10	8 lbs.
05310	Positive	Bulk - Red	50	20 lbs.
05311	Negative	Bulk - Black	50	20 lbs.

⚠ WARNING: Cancer and Reproductive Harm www.P65Warnings.ca.gov

WING NUT TERMINALS

- Clamp type wing nut terminals convert standard post to marine or other special uses
- Brass plated wing nut
- Positive terminal stud size is 3/8"
- Negative and universal terminal stud size is 5/16"



05308

Part #	Polarity	Packaging	Master Carton	
			Quantity	Weight
00354	1 Pos/1 Neg	Clam Shell of 2	10	8 lbs.
00149	Universal	Card of 10	10	36 lbs.
05307 ¹	Universal	Bulk	50	18 lbs.
05308 ¹	Positive	Bulk	50	18 lbs.
05309 ¹	Negative	Bulk	50	18 lbs.

¹Wing nuts packaged in bag, inside box

⚠ WARNING: Cancer and Reproductive Harm www.P65Warnings.ca.gov

BRASS TERMINALS



00512



00639

Part #	Polarity	Packaging	Master Carton	
			Quantity	Weight
00512	Universal	Clam Shell of 1	10	2 lbs.
00639 ¹	1 Pos/1 Neg	Clam Shell of 2	10	8 lbs.

¹5/16" stud size

⚠ WARNING: Cancer and Reproductive Harm www.P65Warnings.ca.gov

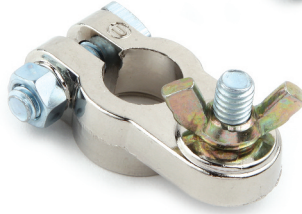
ZINC TOP POST TERMINAL

- Fits 6-1 gauge cables
- Lead-Free
- RoHS Compliant



ZINC MARINE TERMINALS

- Clamp type wing nut terminal converts standard post to marine or other special uses
- Stud size is 3/8"
- Lead-Free
- RoHS Compliant



ZINC REPLACEMENT SIDE TERMINAL

- Fits 6-1 gauge cables
- Comes with 3/8" bolt
- Lead-Free
- RoHS Compliant



ZINC COMMERCIAL TOP POST TERMINAL

- Fits 2 to 4/0 gauge cables
- Lead-Free
- RoHS Compliant



LEAD FREE QUICK CLAMP® TERMINAL

- Tin-plated brass terminal
- Stud size is 5/16"
- Lug hole size fits 5/16"
- Packaging includes four lugs, one positive & one negative quick clamp terminal
- All hardware is included (hex nut, washer, and knurled thumb nut)
- Allows easy, tool-free detachment from battery
- Patented design



LEAD FREE TERMINALS WITH LUGS

- Terminal made of tin-plated brass
- Stud size is 5/16"
- Comes with 2 lugs to fit 5/16" studs
- Allows straight or angled hook-up to cable
- Fits 4 and 6 gauge cable



LEAD FREE TERMINALS WITH HEAT SHRINK TUBE

- Terminal made of tin-plated brass
- Color-coded shrink tube allows for easy polarity identification
- Fits 2 and 4 gauge cable



Part #	Polarity	Packaging	Master Carton	
			Quantity	Weight
31096	Universal	Clam Shell of 1	10	2 lbs.

WARNING: Cancer and Reproductive Harm www.P65Warnings.ca.gov

Part #	Polarity	Packaging	Master Carton	
			Quantity	Weight
31097	Universal	Clam Shell of 1	10	3 lbs.

WARNING: Cancer and Reproductive Harm www.P65Warnings.ca.gov

Part #	Polarity	Packaging	Master Carton	
			Quantity	Weight
31098	Universal	Clam Shell of 1	10	2 lbs.

WARNING: Cancer and Reproductive Harm www.P65Warnings.ca.gov

Part #	Polarity	Packaging	Master Carton	
			Quantity	Weight
31099	Universal	Clam Shell of 1	10	3 lbs.

WARNING: Cancer and Reproductive Harm www.P65Warnings.ca.gov

Part #	Polarity	Packaging	Master Carton	
			Quantity	Weight
08767	1 Pos/1 Neg	Clam Shell of 2	12	5 lbs.

Part #	Polarity	Packaging	Master Carton	
			Quantity	Weight
01056	Universal	Clam Shell of 1	10	2 lbs.
01057	Universal	Bulk	100	15 lbs.
05512	Universal	Card of 10	10	15 lbs.

Part #	Polarity	Packaging	Master Carton	
			Quantity	Weight
04842	Universal	Clam Shell of 2	12	3 lbs.