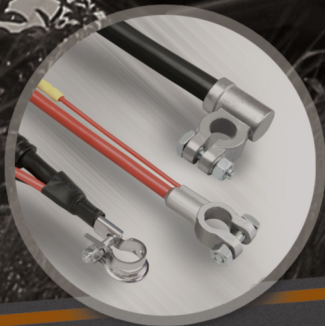


EASTPENN



2018/19 WIRE, CABLE, AND BATTERY ACCESSORIES PRODUCT CATALOG


AND
MARINE MASTER

Wire and Cable Division

A division of the world's Largest and Most Modern Single-Site Battery Manufacturing Facility

East Penn's Wire and Cable division is housed in a 250,000 square-foot facility equipped with state-of-the-art technology utilizing sound yet advanced manufacturing principles. This facility does not just assemble products, but performs the entire manufacturing process from start-to-finish. In fact, East Penn is a supplier to other battery accessory manufacturers who simply buy and assemble components. East Penn's Wire and Cable facility is an invaluable asset to the company's logistically convenient battery manufacturing plants.

East Penn has complete control of the many components in its manufactured products. This ensures the highest quality and complete customer satisfaction. In addition, changes and adjustments in the manufacturing process can be made easily to enhance product quality and achieve continuous improvement objectives. The company's vertically integrated structure enables efficient inventory and lead time control.

Included in a long line of renowned certifications, the Wire and Cable quality system has been certified to ISO 9001:2015 along with certification for ISO 14001:2015 Environment Management System. Every accessory meets rigid quality and performance standards such as the Society of Automotive Engineers, Underwriters Laboratories, and Canadian Standards Association when applicable.

Recognized globally as one of the leading high quality manufacturers, with the broadest product offering, East Penn manufactures some of the finest battery accessory, wire, and cable products in the industry.



GRAVITY LEAD CASTING

This unique process produces high quality lead terminals, which are cast with 100% recycled lead from our on-site EPA approved smelter.



DUAL CABLE EXTRUSION PROCESS

100% copper wire is coated with durable, color-coded PVC insulation.



BOOSTER CABLE ASSEMBLY

Heavy-duty, vinyl coated steel clamps are attached to 100% copper or copper clad conductor cables.



**100%
RECYCLED
ALLOY**

ALL EAST PENN MANUFACTURED LEAD PRODUCTS ARE BUILT WITH 100% RECYCLED LEAD ALLOY.



Wire, Cable, and Battery Accessories

WWW.EASTPENMANUFACTURING.COM

TABLE OF CONTENTS

Booster Cables.....	2-10
Booster Cable Clamps.....	11
Battery Cables – Packaged.....	13-16
Battery Cable Kits.....	17
Battery Cables – Bulk	17-20
Specialty Battery Cables – Bulk	20-23
Battery Terminals.....	25-32
Fasteners.....	31
Crimpable Terminals	33-34
Lugs.....	35-36
Solderless Terminals and Connectors.....	37-38
Battery Cable Terminal Protector Boots	39-41
Cable Ties, Loom, Heat-Shrink Tubing, and Tape.....	41-42
Terminal Cleaning and Protection	44-45
Battery Hold-Downs.....	48
Battery Boxes and Trays.....	49
Battery Tools and Accessories	50-53
Battery Accessories & Electrical Center	54-56
Accessory Box and Cable.....	57
Battery Isolators.....	58
Wire Products.....	59-98
80°C Primary Wire.....	60-61
105°C Primary Wire	62-63
GXL Cross-Linked Polyethylene Wire	64-65
SXL Cross-Linked Polyethylene Wire	66-67
Starter Cable Wire	68-69
SGX Cross-Linked Polyethylene Cable.....	70-71
Welding Cable.....	72-73
UL3311 Cable.....	74
UL/CSA Single Conductor Wire	75-76
UL/CSA Tinned Single Conductor Wire.....	77
Marine Master® UL Listed 1426 Tinned Wire/Cable.....	78-83
Bonded Parallel Wire	84-85
Jacketed Duplex Wire.....	86-87
Jacketed Triplex Wire	88
Jacketed Quadraplex Wire.....	89
Trailer Cable Wire	90-92
RV Cable Wire	93
ABS Trailer Cable Wire	94
Sleeved Trailer Cable Wire	95
Sleeved RV Cable Wire	96
Dual Booster Cable Wire	97
D-Shaped Dual Booster Cable Wire	98
Marine Master® Accessories	99-103
Duracell® Batteries	104-108
Wire and Cable Special Ordering Information	110
Wire and Cable Spool Diameter Chart	111
Technical Data	112-115
Glossary	116-119
Product Index.....	120-140
Warranties and Disclaimer Information.....	144




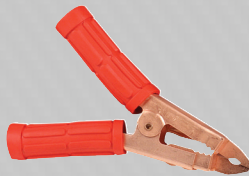
EASTPENN BOOSTER CABLE ASSORTMENT

Quick Reference

CLAMP OPTIONS

ADVANTAGES OF 100% COPPER

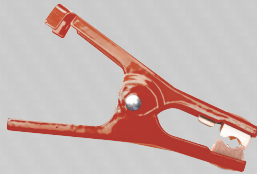
- **Maximum Current Capacity**
- **Long Life / Durability**
-  **Made in USA with US and imported materials, and Built to SAE Specifications**



1. Professional Service
2. High-Tension Clamp
3. Copper Plated Brass Current Carrying Jaw



1. Professional Service
2. High-Tension Clamp
3. Color-Coded



1. Commercial Service
2. High-Tension Clamp
3. Copper Plated Steel Jaw
4. Patented Design



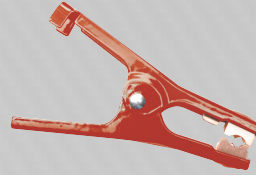
1. Standard Service
2. Color-Coded
3. Copper Plated Steel Clamp

ADVANTAGES OF COPPER/ALUMINUM

- **Cost Savings**
- **Lighter Weight**
- **Built to SAE Specifications**



1. Professional Service
2. High-Tension Clamp
3. Copper Plated Steel Jaw



1. Commercial Service
2. High-Tension Clamp
3. Copper Plated Steel Jaw
4. Patented Design



1. Standard Service
2. Vinyl Coated Clamp
3. Polarity Identification
4. Copper Plated Steel Jaw



1. Standard Service
2. Color-Coded
3. Copper Plated Steel Clamp

THE EAST PENN ADVANTAGE

- Industry leading fill rate of 98% or better coupled with the ability to be flexible when needed.
BENEFIT - Increased sales opportunities
- U.S. Manufactured or East Penn managed Direct Import program to stringent quality standards
BENEFIT - Assurance of East Penn trusted quality
- Experienced Sales Staff with a proven track record on growing sales
BENEFIT - Team supported by East Penn's Executive Staff, Marketing, Engineering and Manufacturing departments

EASTPENN BOOSTER CABLE ASSORTMENT

Choosing the right set of booster cables



PROFESSIONAL SERVICE
2 GAUGE / 24 FEET

- 100% COPPER
- HIGH TENSION CLAMPS



PROFESSIONAL SERVICE
2 GAUGE / 20 FEET

- 100% COPPER
- HEAVY-DUTY CLAMPS



COMMERCIAL SERVICE
4 GAUGE / 20 FEET

- 100% COPPER
- HIGH TENSION CLAMPS



HEAVY SERVICE
6 GAUGE / 16 FEET

- 100% COPPER
- MULTI-USE CLAMPS



MEDIUM SERVICE
8 GAUGE / 12 FEET

- 100% COPPER
- MULTI-USE CLAMPS

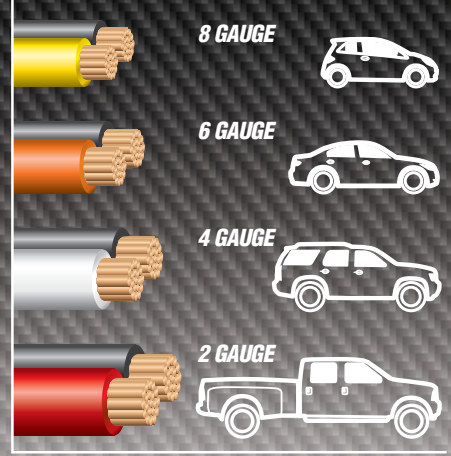


STANDARD SERVICE
10 GAUGE / 12 FEET

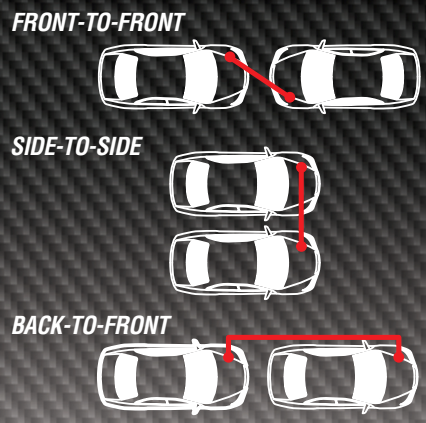
- 100% COPPER

WHAT GAUGE IS RIGHT FOR ME?

The smaller the gauge number, the bigger the diameter of the conductor inside the booster cable and the more capacity it will have.



WHAT LENGTH DO I NEED?



HOOK-UP:	10 FEET	12-16 FEET	20+ FEET
FRONT-TO-FRONT	✓	✓	✓
SIDE-TO-SIDE		✓	✓
BACK-TO-FRONT			✓

WHAT CONNECTION DO I HAVE?



SCAN TO SEE BOOSTER CABLE INSTRUCTIONS

REMOTE BATTERY ACCESS TERMINAL



Booster Cables and Clamps

East Penn booster cable sets are equipped with heavy-duty color-coded clamps. These clamps provide easy attachment on hard to reach side, top post, and remote battery access terminals. Colorful packaging assures high store display visibility along with convenient reusable storage.



- **Booster Cables**
- **Replacement Clamps**



00161



00183



04424



07044

PROFESSIONAL SERVICE BOOSTER CABLES

Cables are made of 1/0 gauge 100% copper conductors. Made with welding cable. High stranding and EPR jacket allow for greater cold weather flexibility. Excellent abrasion resistance.

Cables are made of 2 gauge 100% copper conductors. Thermoplastic Elastomer (TPE) cable insulation protects against oil, grease, and abrasion. Color-coded, tangle-free dual cable construction, specifically designed for maximum flexibility and easy handling.

Part #	Gauge	Length	Clamp	Color	Packaging	Master Carton	
						Quantity	Weight
04424 ■	1/0	20'	600E	Black/Red	Plastic Box	2	40 lbs.

■ English only

▲ **WARNING:** Cancer and Reproductive Harm www.P65Warnings.ca.gov

Part #	Gauge	Length	Clamp	Color	Packaging	Master Carton	
						Quantity	Weight
00161 ■	2	24'	600P	Black/Red	Storage Bag	2	30 lbs.
00183 ● ¹	2	20'	600P	Black/Red	Retail Box	2	26 lbs.
00186 ●	2	20'	600P	Black/Red	Plastic Box	2	29 lbs.
07044 ▲	2	20'	600E	Black/Red	Retail Box	2	28 lbs.

¹Includes storage bag

■ English only

● English and Spanish

▲ English, French, and Spanish

▲ **WARNING:** Cancer and Reproductive Harm www.P65Warnings.ca.gov

