

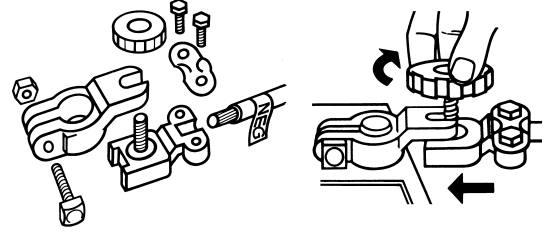
## LEAD QUICK DISCONNECT TERMINAL

- Designed for top post batteries. Fits both negative and positive posts
- For use in passenger cars, light-duty trucks, farm equipment, marine, RVs, and ATVs
- The cable easily detaches from the battery for anti-theft protection and to prevent electrical drain



Part #	Polarity	Packaging	Master Carton	
			Quantity	Weight
00191	Universal	Card of 1	12	4 lbs.
05312	Universal	Bulk	10	6 lbs.

**WARNING:** Cancer and Reproductive Harm [www.P65Warnings.ca.gov](http://www.P65Warnings.ca.gov)



## GOLD-PLATED BOLTS & TERMINALS

- Genuine 24K gold-plated brass



05444\*



05445



05446\*\*

Part #	Description	Packaging	Master Carton	
			Quantity	Weight
05444*	Top Post Terminal	Clam Shell of 1	25	5 lbs.
05445	Side Post Replacement Bolt	Clam Shell of 1	25	3 lbs.
05446**	Multi-Lead Top Post Terminal	Clam Shell of 1	25	6 lbs.

\*Fits 6 to 1 gauge cables

\*\* One 5/16" ring terminal and two 8 gauge auxiliary ports

**WARNING:** Cancer and Reproductive Harm [www.P65Warnings.ca.gov](http://www.P65Warnings.ca.gov)

## POWER SPORTS CHARGING POSTS

- Facilitate charging and testing of power sports batteries
- Posts have M6 threaded stud to screw into power sports battery terminals
- Easy finger tight installation



Part #	Polarity	Packaging	Master Carton	
			Quantity	Weight
05457	Universal	Clam Shell of 2	10	3 lbs.
00385	Universal	Bag of 25	1	11 lbs.

**WARNING:** Cancer and Reproductive Harm [www.P65Warnings.ca.gov](http://www.P65Warnings.ca.gov)

## SIDE TERMINAL CHARGING POSTS

- Facilitate charging and testing of side terminal batteries
- Posts have 3/8" threaded stud to screw into side terminal batteries
- Not intended for side terminal to post conversion



Part #	Polarity	Packaging	Master Carton	
			Quantity	Weight
00352	1 Pos/1 Neg	Clam Shell of 2	10	4 lbs.
05313	Positive	Bulk	25	5 lbs.
05314	Negative	Bulk	25	5 lbs.

**WARNING:** Cancer and Reproductive Harm [www.P65Warnings.ca.gov](http://www.P65Warnings.ca.gov)

## CHARGING POSTS WITH EARS

- Facilitate charging and testing of batteries
- Posts have 3/8" threaded stud to screw into side terminal batteries
- 01477 fits 3/8" stud
- Easy finger tight installation



01477

05456

Part #	Battery Type	Packaging	Master Carton	
			Quantity	Weight
00386	Side	Clam Shell of 2	10	3 lbs.
05455	Side	Bag of 25	1	4 lbs.
05456	Side	Bulk	100	15 lbs.
01477	3/8" Stud	Bag of 6	10	20 lbs.

**WARNING:** Cancer and Reproductive Harm [www.P65Warnings.ca.gov](http://www.P65Warnings.ca.gov)

## GROUP 31 OR STUD STYLE CONVERSION POSTS

- Use to convert 3/8" stud type terminals to post type terminals



05320



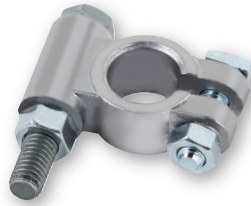
05769

Part #	Polarity	Packaging	Master Carton	
			Quantity	Weight
00575	Universal	Clam Shell of 2	10	3 lbs.
05320	Universal	Bulk	25	5 lbs.
05768	Positive	Bulk	25	4 lbs.
05769	Negative	Bulk	25	4 lbs.

**WARNING:** Cancer and Reproductive Harm [www.P65Warnings.ca.gov](http://www.P65Warnings.ca.gov)

### ORDNANCE BOLT TYPE TERMINAL

- Lead construction
- Long bolt allows for additional power connection



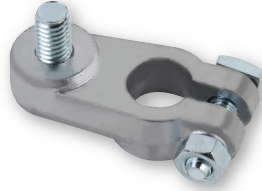
Part #	Polarity	Packaging	Master Carton	
			Quantity	Weight
05315	Positive	Bulk	25	13 lbs.
05316	Negative	Bulk	25	13 lbs.
05317	Universal	Bulk	25	13 lbs.

**⚠ WARNING:** Cancer and Reproductive Harm [www.P65Warnings.ca.gov](http://www.P65Warnings.ca.gov)

### POST TO THREADED CONNECTOR CONVERSION

#### 3/8" Stud

- Change a post type battery to a 3/8" stud type battery
- Can be used with OE nut
- Wing nut or hex nut can be used if clearance is a problem

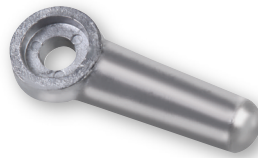


Part #	Polarity	Packaging	Master Carton	
			Quantity	Weight
05318	Universal	Bulk	25	11 lbs.

**⚠ WARNING:** Cancer and Reproductive Harm [www.P65Warnings.ca.gov](http://www.P65Warnings.ca.gov)

### UNIVERSAL SIDE TERMINAL CONVERSION POST

- Extends above the battery to convert side terminal battery to post terminal
- For use with post terminal battery cables or for group charging



Part #	Polarity	Packaging	Master Carton	
			Quantity	Weight
05319	Universal	Bulk	25	8 lbs.

**⚠ WARNING:** Cancer and Reproductive Harm [www.P65Warnings.ca.gov](http://www.P65Warnings.ca.gov)

### SIDE TERMINAL ADAPTERS

- Converts post terminal battery for use with side terminal cables



Part #	Polarity	Packaging	Master Carton	
			Quantity	Weight
00353	1 Pos/1 Neg	Clam Shell of 2	10	9 lbs.
05411	Positive	Bulk	25	11 lbs.
05412	Negative	Bulk	25	11 lbs.

**⚠ WARNING:** Cancer and Reproductive Harm [www.P65Warnings.ca.gov](http://www.P65Warnings.ca.gov)

### FLAG TO POST TERMINAL ADAPTERS

- Designed to easily convert most U1 flag terminal batteries to post terminal applications where required



Part #	Packaging	Master Carton	
		Quantity	Weight
02033	Clam Shell of 2	10	4 lbs.
05321	Bulk	25	5 lbs.

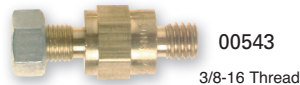
**⚠ WARNING:** Cancer and Reproductive Harm [www.P65Warnings.ca.gov](http://www.P65Warnings.ca.gov)

### BRASS BOLT EXTENDERS

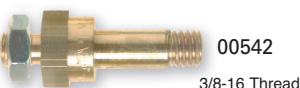
- For adding direct to battery auxiliary connections



1-3/4" Short Side Bolt



1-13/16" Long Side Bolt



1-7/16" Top Post Terminal Bolt Extender



Part #	Packaging	Master Carton	
		Quantity	Weight
<b>1-3/4" Short Side Bolt</b>			
00543	Clam Shell of 1	10	1 lb.
05416	Bulk	10	1 lb.
<b>1-13/16" Long Side Bolt</b>			
00542	Clam Shell of 1	10	1 lbs.
05417	Bulk	10	1 lbs.
<b>1-7/16" Top Post Terminal Bolt Extender</b>			
00541	Clam Shell of 1	10	1 lbs.
05418	Bulk	10	1 lbs.

**⚠ WARNING:** Cancer and Reproductive Harm [www.P65Warnings.ca.gov](http://www.P65Warnings.ca.gov)



**LEAD SHIMS**

- Rebuild battery post/cable clamp connections



Part #	Polarity	Packaging	Master Carton	
			Quantity	Weight
06300	Universal	Box of 25	1	1 lb.
07753	Universal	Clam Shell of 2	10	1 lb.

**WARNING:** Cancer and Reproductive Harm [www.P65Warnings.ca.gov](http://www.P65Warnings.ca.gov)

**GARDEN TRACTOR NUT AND BOLT**

- Zinc-plated steel to protect against corrosion
- Fits group U1 batteries
- 1/4"-20 x 3/4" bolt
- 1/4"-20 hex nut



Part #	Packaging	Master Carton	
		Quantity	Weight
00193	Clam Shell of 2	10	1 lb.

**BATTERY BOLT WITH SHOULDER NUT**

- Zinc-plated steel to protect against corrosion
- 5/16"-18 x 1-1/4" bolt
- 5/16"-18 hex nut

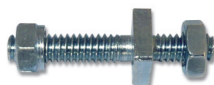


Part #	Packaging	Master Carton	
		Quantity	Weight
00324	Clam Shell of 2	10	1 lb.
05322*	Bag of 50	1	2 lbs.

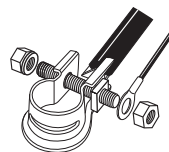
\* **WARNING:** Cancer and Reproductive Harm [www.P65Warnings.ca.gov](http://www.P65Warnings.ca.gov)

**OE DOUBLE THREADED BOLT**

- Used for adding auxiliary accessories directly to the battery
- Zinc-plated steel to protect against corrosion
- 1/4"-20 UNC thread
- Includes shoulder nut



Part #	Packaging	Master Carton	
		Quantity	Weight
03668	Clam Shell of 2	10	1 lb.



**REPLACEMENT SIDE TERMINAL BOLT**

- 3/8-16 UNC thread
- For use with East Penn replacement side terminals
- Zinc-plated steel to protect against corrosion



Part #	Packaging	Master Carton	
		Quantity	Weight
05304	Bag of 50	1	2 lbs.

**OE REPLACEMENT SIDE TERMINAL BOLTS**

- 3/8"-16 UNC thread
- Use long bolt and/or spacer for dual cable hook-up
- Bolt head 5/16"
- Zinc-plated steel to protect against corrosion



Part #	Packaging	Master Carton	
		Quantity	Weight
<b>Short Side Terminal Bolt</b>			
00325	Clam Shell of 2	10	1 lb.
05323	Bag of 50	1	3 lbs.
<b>Long Side Terminal Bolt</b>			
05324 <sup>1</sup>	Bag of 25	1	2 lbs.
08766 <sup>2</sup>	Clam Shell of 2	10	4 lbs.
<b>Spacer</b>			
05442 <sup>3</sup>	Bulk Spacer	25	2 lbs.

<sup>1</sup>Length 1.685"

<sup>2</sup>Includes lead spacer

<sup>3</sup>Spacer only

\* **WARNING:** Cancer and Reproductive Harm [www.P65Warnings.ca.gov](http://www.P65Warnings.ca.gov)

**GROUP 31 NUTS**

- Closed top has 3/8"-16 UNC thread and 9/16" hex head
- Open top has 3/8"-16 UNC thread and 9/16" hex head. This is not recommended for use with the overmolded harness assemblies found on page 22



Closed Top



Open Top

Part #	Style	Packaging	Master Carton	
			Quantity	Weight
00574 <sup>1</sup>	Closed	Clam Shell of 1	10	1 lb.
05419 <sup>1</sup>	Closed	Bag of 25	25	2 lbs.
05415 <sup>2</sup>	Open	Bag of 25	1	2 lbs.

<sup>1</sup> stainless steel sintered metal

<sup>2</sup> stainless steel

**MARINE HEX NUTS**

- Stainless steel
- 5/16-18 UNC hex nut



Part #	Packaging	Master Carton	
		Quantity	Weight
05519	Bag of 50	1	1 lb.

**WING NUTS**

- For threaded stud connections
- Stainless steel
- Contains one 3/8" wing nut and two-5/16" wing nuts



Part #	Packaging	Master Carton	
		Quantity	Weight
08779	Clam Shell of 3	10	1 lb.

**INDUSTRIAL PLUGS AND CONTACTS**

- Single piece housings made of impact resistant polycarbonate offers high physical strength & superior dielectric properties
- Silver plated solid copper contacts offer low resistance for superior conductivity
- Self cleaning contact design resists arcing by keeping conductive surfaces clean & free of corrosion
- Contacts have flared & heat treated barrels which readily accept fine stranded wire & allow easy, quality crimping
- Integral stainless steel springs maintain constant pressure on the contact to ensure a consistent, low-resistance connection
- Kits include contacts & housing



Part #	Kit Type	Color	Gauge	Packaging	Master Carton	
					Quantity	Weight
07394	50 AMP	Grey	6	Box of 1	1	0.05 lbs.
07395	50 AMP	Red	6	Box of 1	1	0.05 lbs.
07396	120 AMP	Grey	6	Box of 1	1	0.2 lbs.
07397	120 AMP	Red	6	Box of 1	1	0.2 lbs.
07398	120 AMP	Blue	6	Box of 1	1	0.2 lbs.
07399	120 AMP	Grey	4	Box of 1	1	0.2 lbs.
07480	120 AMP	Red	4	Box of 1	1	0.2 lbs.
07481	120 AMP	Blue	4	Box of 1	1	0.2 lbs.
07482	120 AMP	Grey	2	Box of 1	1	0.2 lbs.
07483	120 AMP	Red	2	Box of 1	1	0.2 lbs.
07484	120 AMP	Blue	2	Box of 1	1	0.2 lbs.
07485	175 AMP	Grey	4	Box of 1	1	0.3 lbs.
07486	175 AMP	Red	4	Box of 1	1	0.3 lbs.
07487	175 AMP	Blue	4	Box of 1	1	0.3 lbs.
07488	175 AMP	Grey	2	Box of 1	1	0.3 lbs.
07489	175 AMP	Red	2	Box of 1	1	0.3 lbs.
07490	175 AMP	Blue	2	Box of 1	1	0.3 lbs.
07491	175 AMP	Grey	1/0	Box of 1	1	0.3 lbs.
07492	175 AMP	Red	1/0	Box of 1	1	0.3 lbs.
07493	175 AMP	Blue	1/0	Box of 1	1	0.3 lbs.
07494	350 AMP	Grey	2/0	Box of 1	1	0.6 lbs.
07495	350 AMP	Red	2/0	Box of 1	1	0.6 lbs.
07496	350 AMP	Blue	2/0	Box of 1	1	0.6 lbs.
07497	350 AMP	Grey	3/0	Box of 1	1	0.6 lbs.
07498	350 AMP	Red	3/0	Box of 1	1	0.6 lbs.
07499	350 AMP	Blue	3/0	Box of 1	1	0.6 lbs.
07664	350 AMP	Grey	4/0	Box of 1	1	0.6 lbs.
07666	350 AMP	Red	4/0	Box of 1	1	0.6 lbs.
07667	350 AMP	Blue	4/0	Box of 1	1	0.6 lbs.



# CRIMPABLE TERMINALS

## STRAIGHT TERMINALS

- 100% tin-plated copper alloy
- Bolt & shoulder nut included
- Resists corrosion
- Gauge and polarity stamped on terminal
- Thick wall for strong crimp



Part #	Gauge	Polarity	Packaging	Master Carton	
				Quantity	Weight
05359	4	Universal	Bulk	10	1 lb.
05360	4	Positive	Bulk	10	1 lb.
05361	4	Negative	Bulk	10	1 lb.
05513	2	Positive	Bulk	10	2 lbs.
05514	2	Negative	Bulk	10	2 lbs.
05362	1	Positive	Bulk	10	2 lbs.
05363	1	Negative	Bulk	10	2 lbs.
05364	1/0	Positive	Bulk	10	2 lbs.
05365	1/0	Negative	Bulk	10	2 lbs.
05366	2/0	Positive	Bulk	10	2 lbs.
05367	2/0	Negative	Bulk	10	2 lbs.
05368	3/0	Positive	Bulk	10	2 lbs.
05369	3/0	Negative	Bulk	10	2 lbs.
05370	4/0	Positive	Bulk	8	2 lbs.
05371	4/0	Negative	Bulk	8	2 lbs.

## LEFT ELBOW TERMINALS

- 100% tin-plated copper alloy
- Bolt & shoulder nut included
- Resists corrosion
- Gauge and polarity stamped on terminal
- Thick wall for strong crimp



Part #	Gauge	Polarity	Packaging	Master Carton	
				Quantity	Weight
05388	1/0	Positive	Bulk	10	2 lbs.
05389	1/0	Negative	Bulk	10	2 lbs.
05390	2/0	Positive	Bulk	10	2 lbs.
05391	2/0	Negative	Bulk	10	2 lbs.
05392	3/0	Positive	Bulk	10	2 lbs.
05393	3/0	Negative	Bulk	10	2 lbs.
05394	4/0	Positive	Bulk	8	2 lbs.
05395	4/0	Negative	Bulk	8	2 lbs.

## RIGHT ELBOW TERMINALS

- 100% tin-plated copper alloy
- Bolt & shoulder nut included
- Resists corrosion
- Gauge and polarity stamped on terminal
- Thick wall for strong crimp



Part #	Gauge	Polarity	Packaging	Master Carton	
				Quantity	Weight
05380	1/0	Positive	Bulk	10	2 lbs.
05381	1/0	Negative	Bulk	10	2 lbs.
05382	2/0	Positive	Bulk	10	2 lbs.
05383	2/0	Negative	Bulk	10	2 lbs.
05384	3/0	Positive	Bulk	10	2 lbs.
05385	3/0	Negative	Bulk	10	2 lbs.
05386	4/0	Positive	Bulk	8	2 lbs.
05387	4/0	Negative	Bulk	8	2 lbs.

## FLAG TERMINALS

- 100% tin-plated copper alloy
- Bolt & shoulder nut included
- Resists corrosion
- Gauge and polarity stamped on terminal
- Thick wall for strong crimp



Part #	Gauge	Polarity	Packaging	Master Carton	
				Quantity	Weight
05372	1/0	Positive	Bulk	8	2 lbs.
05373	1/0	Negative	Bulk	8	2 lbs.
05374	2/0	Positive	Bulk	8	3 lbs.
05375	2/0	Negative	Bulk	8	3 lbs.
05376	3/0	Positive	Bulk	8	3 lbs.
05377	3/0	Negative	Bulk	8	3 lbs.
05378	4/0	Positive	Bulk	8	3 lbs.
05379	4/0	Negative	Bulk	8	3 lbs.



**3/8" STUD TERMINALS**

- 100% tin-plated copper alloy
- Resists corrosion
- Thick wall for strong crimp
- Gauges identified on lugs
- Crimp or solder to cable
- Fits up to 3/8" stud



05396

05397

Part #	Gauge	Style	Packaging	Master Carton	
				Quantity	Weight
05396	2/0	Single	Bulk	10	1 lb.
05397	2/0	Dual	Bulk	10	2 lbs.

**SIDE TERMINAL**

- 100% tin-plated copper alloy
- Resists corrosion
- Thick wall for strong crimp
- Gauges identified on lugs
- Crimp or solder to cable
- Fits up to 3/8" stud



Part #	Gauge	Polarity	Packaging	Master Carton	
				Quantity	Weight
05475	4	Universal	Bulk	10	1 lb.
05476	2	Universal	Bulk	10	1 lb.

**LOCKING ANTI-ROTATING STACKABLE LUGS**

- 100% tin-plated copper alloy
- Resists corrosion
- Thick wall for strong crimp
- Gauges identified on lugs
- Crimp or solder to cable
- Fits up to 3/8" stud



05495

05496

Part #	Gauge	Packaging	Master Carton	
			Quantity	Weight
05495	1/0	Bulk	10	1 lb.
05496	2/0	Bulk	10	1 lb.
05497	3/0	Bulk	10	1 lb.

**SPLICES**

- 100% tin-plated copper alloy
- Resists corrosion
- Thick wall for strong crimp
- Crimp or solder to cable



Part #	Gauge	Packaging	Master Carton	
			Quantity	Weight
05354 <sup>1</sup>	4	Bulk	10	1 lb.
05355 <sup>1</sup>	1-2	Bulk	10	2 lbs.
05356 <sup>1</sup>	1/0	Bulk	10	3 lbs.
05357 <sup>1</sup>	2/0	Bulk	10	3 lbs.
05358 <sup>1</sup>	3/0	Bulk	10	3 lbs.
05398	1/0	Bulk	10	1 lb.
05399	2/0	Bulk	10	1 lb.
05400	3/0	Bulk	10	1 lb.
05401	4/0	Bulk	10	1 lb.

<sup>1</sup> Extra thick wall for greater strength and conductivity



**COPPER LUGS**

- Lugs can be crimped or soldered and are stackable
- Gauge stamped on lug for easy identification
- Flared ends for easy entry
- UL Listed



**Packaged**



00685



00539

Part #	Gauge	Stud Hole	Packaging	Master Carton	
				Quantity	Weight
00548	6	1/4"	Clam Shell of 2	10	1 lb.
00549	6	5/16"	Clam Shell of 2	10	1 lb.
00685	4	3/8"	Clam Shell of 2	10	1 lb.
00547	4	5/16"	Clam Shell of 2	10	1 lb.
00546	2	5/16"	Clam Shell of 2	10	1 lb.
00544	2	3/8"	Clam Shell of 2	10	1 lb.
00545	2	1/2"	Clam Shell of 2	10	1 lb.
00539 <sup>1,2</sup>	2/0	3/8"	Clam Shell of 2	10	1 lb.
00540 <sup>1,2</sup>	2/0	1/2"	Clam Shell of 2	10	1 lb.

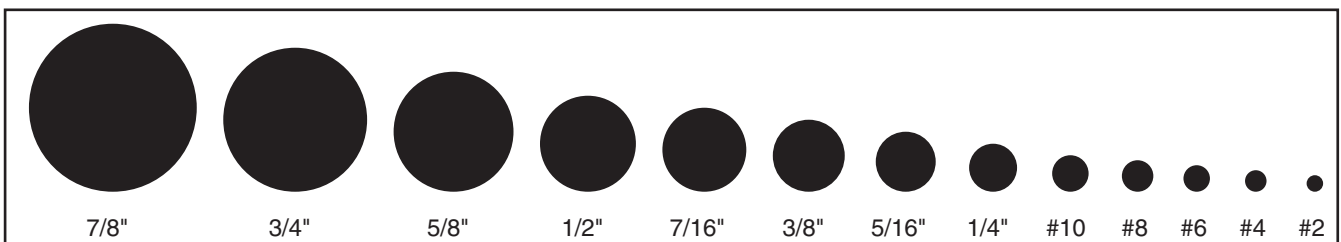
<sup>1</sup> Tin-plated  
<sup>2</sup> non UL-listed

**Bulk**



Part #	Gauge	Stud Hole	Packaging	Master Carton	
				Quantity	Weight
05470	8	#10	Bagged	50	1 lb.
05472	8	1/4"	Bagged	50	1 lb.
05474	8	5/16"	Bagged	50	1 lb.
05473	8	3/8"	Bagged	50	1 lb.
05471	8	1/2"	Bagged	50	1 lb.
05466	6	#10	Bagged	50	1 lb.
05467	6	1/4"	Bagged	50	1 lb.
05468	6	5/16"	Bagged	50	1 lb.
05326	6	3/8"	Bagged	50	1 lb.
05469	6	1/2"	Bagged	50	1 lb.
05465	4	1/4"	Bagged	50	1 lb.
05328	4	5/16"	Bagged	50	1 lb.
05327	4	3/8"	Bagged	50	1 lb.
05464	4	1/2"	Bagged	50	1 lb.
05461	2	1/4"	Bagged	50	1 lb.
05462	2	5/16"	Bagged	50	1 lb.
05329	2	3/8"	Bagged	50	1 lb.
05330	2	1/2"	Bagged	50	1 lb.
05458	1	1/4"	Bagged	50	2 lbs.
05459	1	5/16"	Bagged	50	2 lbs.
05331	1	3/8"	Bagged	50	2 lbs.
05332	1	1/2"	Bagged	50	2 lbs.
05506	1/0	1/4"	Bagged	50	2 lbs.
05460	1/0	5/16"	Bagged	50	2 lbs.
05333	1/0	3/8"	Bagged	50	2 lbs.
05334	1/0	1/2"	Bagged	50	2 lbs.
05507	2/0	1/4"	Bagged	50	3 lbs.
05463	2/0	5/16"	Bagged	50	3 lbs.
05335	2/0	3/8"	Bagged	50	3 lbs.
05336	2/0	1/2"	Bagged	50	3 lbs.
05337	3/0	3/8"	Bagged	50	3 lbs.
05338	3/0	1/2"	Bagged	50	3 lbs.
05339	4/0	3/8"	Bagged	50	4 lbs.
05340	4/0	1/2"	Bagged	50	4 lbs.
03275	3/0	3/8"	Bag of 25	1	1.5 lbs.
03276	3/0	1/2"	Bag of 25	1	1.5 lbs.
03277	4/0	3/8"	Bag of 25	1	2 lbs.
03278	4/0	1/2"	Bag of 25	1	2 lbs.

**Standard Stud Size**



**TIN-PLATED COPPER LUGS**

- Resists corrosion
- Lugs can be crimped or soldered and are stackable
- Gauge stamped on lug for easy identification
- Flared ends for easy entry
- UL Listed



Part #	Gauge	Stud Hole	Packaging	Master Carton	
				Quantity	Weight
31121	6	#10	Bag of 50	1	1 lb.
31122	6	1/4"	Bag of 50	1	1 lb.
31123	6	5/16"	Bag of 50	1	1 lb.
31124	6	3/8"	Bag of 50	1	1 lb.
31080	4	1/4"	Bag of 50	1	1 lb.
31081	4	5/16"	Bag of 50	1	1 lb.
31082	4	3/8"	Bag of 50	1	1 lb.
31083	2	1/4"	Bag of 50	1	1 lb.
31084	2	5/16"	Bag of 50	1	1 lb.
31085	2	3/8"	Bag of 50	1	1 lb.
31086	1	1/4"	Bag of 50	1	2 lbs.
31087	1	5/16"	Bag of 50	1	2 lbs.
31088	1	3/8"	Bag of 50	1	2 lbs.
31089	1/0	1/4"	Bag of 50	1	2 lbs.
31090	1/0	5/16"	Bag of 50	1	2 lbs.
31091	1/0	3/8"	Bag of 50	1	2 lbs.
31092	2/0	1/4"	Bag of 50	1	3 lbs.
31093	2/0	5/16"	Bag of 50	1	3 lbs.
31094	2/0	3/8"	Bag of 50	1	3 lbs.

**EXTRA HEAVY DUTY TIN-PLATED COPPER LUGS**

- Thicker walls for greater strength and conductivity
- Used for severe-duty applications
- Gauge stamped on lug for easy identification
- Lugs can be crimped or soldered and are stackable



Part #	Gauge	Stud Hole	Packaging	Master Carton	
				Quantity	Weight
05492	8	1/4"	Bagged	10	1 lb.
05494	8	5/16"	Bagged	10	1 lb.
05493	8	3/8"	Bagged	10	1 lb.
05489	6	1/4"	Bagged	10	1 lb.
05491	6	5/16"	Bagged	10	1 lb.
05490	6	3/8"	Bagged	10	1 lb.
05341	4	1/4"	Bagged	10	1 lb.
05486	4	5/16"	Bagged	10	1 lb.
05342	4	3/8"	Bagged	10	1 lb.
05485	4	1/2"	Bagged	10	1 lb.
05479	1-2	1/4"	Bagged	10	1 lb.
05480	1-2	5/16"	Bagged	10	1 lb.
05343	1-2	3/8"	Bagged	10	1 lb.
05344	1-2	1/2"	Bagged	10	1 lb.
05477	1/0	1/4"	Bagged	10	1 lb.
05478	1/0	5/16"	Bagged	10	1 lb.
05345	1/0	3/8"	Bagged	10	1 lb.
05346	1/0	1/2"	Bagged	10	1 lb.
05481	2/0	1/4"	Bagged	10	1 lb.
05482	2/0	5/16"	Bagged	10	1 lb.
05347	2/0	3/8"	Bagged	10	1 lb.
05349	2/0	1/2"	Bagged	10	1 lb.
05483	3/0	1/4"	Bagged	10	1 lb.
05484	3/0	5/16"	Bagged	10	1 lb.
05350	3/0	3/8"	Bagged	10	1 lb.
05351	3/0	1/2"	Bagged	10	1 lb.
05487	4/0	1/4"	Bagged	10	1 lb.
05488	4/0	5/16"	Bagged	10	1 lb.
05352	4/0	3/8"	Bagged	10	1 lb.
05353	4/0	1/2"	Bagged	10	1 lb.

**GOLF CAR TERMINAL LUG**

- Fits up to 5/16" stud
- Tin-plated copper



**SOLDER PELLETS**

- Fast method for attaching battery lug to cable



Part #	Gauge	Packaging	Master Carton	
			Quantity	Weight
05505	6	Bag of 50	1	1 lb.

Part #	Gauge	Packaging	Master Carton	
			Quantity	Weight
05498	4	Bag of 10	1	1 lb.
05499	2	Bag of 10	1	1 lb.
05500	1	Bag of 10	1	1 lb.
05501	1/0	Bag of 10	1	1 lb.
05502	2/0	Bag of 10	1	1 lb.
05503	3/0	Bag of 10	1	1 lb.
05504	4/0	Bag of 10	1	1 lb.

**WARNING:** Cancer and Reproductive Harm [www.P65Warnings.ca.gov](http://www.P65Warnings.ca.gov)







**RING TERMINALS**



Part #	Gauge	Style	Stud/Tab Size	Insulation	Packaging	Master Carton	
						Quantity	Weight
05720	22-18	Ring	6-8	PVC	Bag of 100	1	1 lb.
05721	22-18	Ring	8-10	PVC	Bag of 100	1	1 lb.
05700	16-14	Ring	4-6	PVC	Bag of 100	1	1 lb.
05719	16-14	Ring	6-8	PVC	Bag of 100	1	1 lb.
05701	16-14	Ring	10	PVC	Bag of 100	1	1 lb.
05702	16-14	Ring	1/4"	PVC	Bag of 100	1	1 lb.
05703	12-10	Ring	10	PVC	Bag of 100	1	1 lb.
05704	12-10	Ring	1/4"	PVC	Bag of 100	1	1 lb.
05705	12-10	Ring	3/8"	PVC	Bag of 100	1	1 lb.

**⚠ WARNING:** Cancer and Reproductive Harm [www.P65Warnings.ca.gov](http://www.P65Warnings.ca.gov)



Part #	Gauge	Style	Stud/Tab Size	Insulation	Packaging	Master Carton	
						Quantity	Weight
05735	22-18	Ring	8	Heat Shrinkable Nylon	Bag of 25	1	1 lb.
05736	22-18	Ring	10	Heat Shrinkable Nylon	Bag of 25	1	1 lb.
05738	16-14	Ring	8	Heat Shrinkable Nylon	Bag of 25	1	1 lb.
05739	16-14	Ring	10	Heat Shrinkable Nylon	Bag of 25	1	1 lb.
05737	16-14	Ring	1/4"	Heat Shrinkable Nylon	Bag of 25	1	1 lb.
05762	12-10	Ring	10	Heat Shrinkable Nylon	Bag of 25	1	1 lb.
05740	12-10	Ring	1/4"	Heat Shrinkable Nylon	Bag of 25	1	1 lb.
05741	12-10	Ring	3/8"	Heat Shrinkable Nylon	Bag of 25	1	1 lb.

**SPADE TERMINALS**



Part #	Gauge	Style	Stud/Tab Size	Insulation	Packaging	Master Carton	
						Quantity	Weight
05706	16-14	Spade	8-10	PVC	Bag of 100	1	1 lb.
05707	12-10	Spade	8-10	PVC	Bag of 100	1	1 lb.

**⚠ WARNING:** Cancer and Reproductive Harm [www.P65Warnings.ca.gov](http://www.P65Warnings.ca.gov)

**SNAP PLUG**



Part #	Gauge	Style	Stud/Tab Size	Insulation	Packaging	Master Carton	
						Quantity	Weight
05729	16-14	Snap Plug Receptacle	—	PVC	Bag of 100	1	1 lb.
05712	16-14	Snap Plug	—	PVC	Bag of 100	1	1 lb.

**⚠ WARNING:** Cancer and Reproductive Harm [www.P65Warnings.ca.gov](http://www.P65Warnings.ca.gov)

**MALE AND FEMALE DISCONNECTS**



Part #	Gauge	Style	Stud/Tab Size	Insulation	Packaging	Master Carton	
						Quantity	Weight
05708	16-14	Male Disconnect	.25" x .032"	PVC	Bag of 100	1	1 lb.
05709	16-14	Female Disconnect	.25" x .032"	PVC	Bag of 100	1	1 lb.
05710	12-10	Male Disconnect	.25" x .032"	PVC	Bag of 100	1	1 lb.
05711	12-10	Female Disconnect	.25" x .032"	PVC	Bag of 100	1	1 lb.

**⚠ WARNING:** Cancer and Reproductive Harm [www.P65Warnings.ca.gov](http://www.P65Warnings.ca.gov)

**FULLY INSULATED MALE AND FEMALE DISCONNECTS**



Part #	Gauge	Style	Stud/Tab Size	Insulation	Packaging	Master Carton	
						Quantity	Weight
01895	22-18	Male Disconnect	.25" x .032"	PVC	Bag of 100	1	1 lb.
01898	22-18	Female Disconnect	.25" x .032"	PVC	Bag of 100	1	1 lb.
01896	16-14	Male Disconnect	.25" x .032"	PVC	Bag of 100	1	1 lb.
01899	16-14	Female Disconnect	.25" x .032"	PVC	Bag of 100	1	1 lb.
01897	12-10	Male Disconnect	.25" x .032"	PVC	Bag of 100	1	1 lb.
01908	12-10	Female Disconnect	.25" x .032"	PVC	Bag of 100	1	1 lb.

**WARNING:** Cancer and Reproductive Harm [www.P65Warnings.ca.gov](http://www.P65Warnings.ca.gov)

**BUTT CONNECTORS**



Part #	Gauge	Style	Stud/Tab Size	Insulation	Packaging	Master Carton	
						Quantity	Weight
05713	22-18	Butt Connector	—	PVC	Bag of 100	1	1 lb.
05714	16-14	Butt Connector	—	PVC	Bag of 100	1	1 lb.
05715	12-10	Butt Connector	—	PVC	Bag of 100	1	1 lb.

**WARNING:** Cancer and Reproductive Harm [www.P65Warnings.ca.gov](http://www.P65Warnings.ca.gov)



Part #	Gauge	Style	Stud/Tab Size	Insulation	Packaging	Master Carton	
						Quantity	Weight
05730	22-18	Butt Connector	—	Nylon	Bag of 100	1	1 lb.
05731	16-14	Butt Connector	—	Nylon	Bag of 100	1	1 lb.
05732	12-10	Butt Connector	—	Nylon	Bag of 100	1	1 lb.



Part #	Gauge	Style	Stud/Tab Size	Insulation	Packaging	Master Carton	
						Quantity	Weight
05743	22-18	Butt Connector	—	Heat Shrinkable Nylon	Bag of 25	1	1 lb.
05744	16-14	Butt Connector	—	Heat Shrinkable Nylon	Bag of 25	1	1 lb.
05745	12-10	Butt Connector	—	Heat Shrinkable Nylon	Bag of 25	1	1 lb.

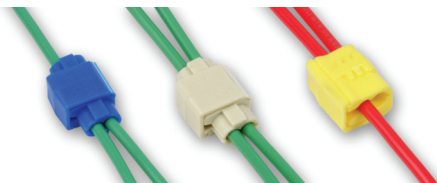
**NON-INSULATED BUTT CONNECTORS**



Part #	Gauge	Style	Stud/Tab Size	Insulation	Packaging	Master Carton	
						Quantity	Weight
05733	16-14	Butt Connector	—	Non-Insulated	Bag of 100	1	1 lb.
05734	12-10	Butt Connector	—	Non-Insulated	Bag of 100	1	1 lb.

**QUICK SPLICE CONNECTORS**

• No wire stripping required



05746

05747

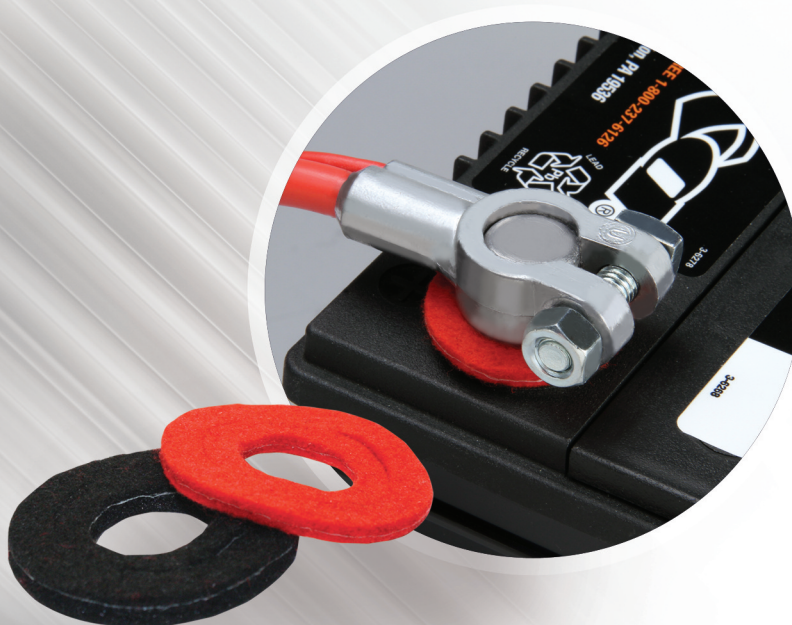
05748

Part #	Gauge	Color	Packaging	Master Carton	
				Quantity	Weight
05746	18-14	Blue	Bag of 100	1	1 lb.
05747	18-14	White	Bag of 100	1	1 lb.
05748	12-10	Yellow	Bag of 100	1	1 lb.

**WARNING:** Cancer and Reproductive Harm [www.P65Warnings.ca.gov](http://www.P65Warnings.ca.gov)

# Terminal Cleaning and Protection

East Penn offers the most complete line of terminal cleaning and protection products.



- Boots
- Heat Shrink Tubing
- Cleaner and Protection Sprays
- Terminal Protectors

# BATTERY CABLE TERMINAL PROTECTOR BOOTS

- Keeps terminals protected from inadvertent, accidental contact
- Identifies polarity

## PACKAGED STRAIGHT BOOTS

- Temperature rating of 65°C (149°F)
- Cold temperature rating of -25°C (13°F)
- RoHS Compliant PVC



Part #	Gauge	Color	Packaging	Master Carton	
				Quantity	Weight
00684	4-6	Black/Red	Clam Shell of 2	10	1 lb.

**⚠ WARNING:** Cancer and Reproductive Harm [www.P65Warnings.ca.gov](http://www.P65Warnings.ca.gov)

## BULK

- Temperature rating of 80°C (176°F)
- Meets V-2 UL 94 standards
- REACH, RoHS and WEEE compliant material

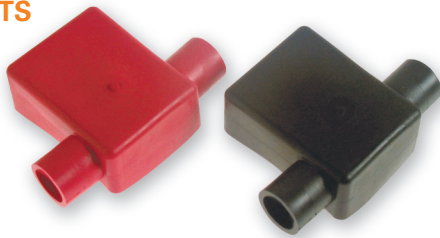
## STRAIGHT BOOTS



Part #	Gauge	Color	Packaging	Master Carton	
				Quantity	Weight
06100	4-6	Black	Bulk	10	1 lb.
06101	4-6	Red	Bulk	10	1 lb.
06102	1-2	Black	Bulk	10	1 lb.
06103	1-2	Red	Bulk	10	1 lb.
06104	1/0-2/0	Black	Bulk	10	1 lb.
06105	1/0-2/0	Red	Bulk	10	1 lb.

**⚠ WARNING:** Cancer and Reproductive Harm [www.P65Warnings.ca.gov](http://www.P65Warnings.ca.gov)

## FLAG BOOTS



Part #	Gauge	Color	Packaging	Master Carton	
				Quantity	Weight
06112	2	Black	Bulk	10	1 lb.
06113	2	Red	Bulk	10	1 lb.
06106	2/0	Black	Bulk	10	1 lb.
06107	2/0	Red	Bulk	10	1 lb.

**⚠ WARNING:** Cancer and Reproductive Harm [www.P65Warnings.ca.gov](http://www.P65Warnings.ca.gov)

## RIGHT ELBOW BOOTS



Part #	Gauge	Color	Packaging	Master Carton	
				Quantity	Weight
06114	2	Black	Bulk	10	1 lb.
06115	2	Red	Bulk	10	1 lb.
06108	2/0	Black	Bulk	10	1 lb.
06109	2/0	Red	Bulk	10	1 lb.

**⚠ WARNING:** Cancer and Reproductive Harm [www.P65Warnings.ca.gov](http://www.P65Warnings.ca.gov)

## LEFT ELBOW BOOTS



Part #	Gauge	Color	Packaging	Master Carton	
				Quantity	Weight
06116	2	Black	Bulk	10	1 lb.
06117	2	Red	Bulk	10	1 lb.
06110	2/0	Black	Bulk	10	1 lb.
06111	2/0	Red	Bulk	10	1 lb.

**⚠ WARNING:** Cancer and Reproductive Harm [www.P65Warnings.ca.gov](http://www.P65Warnings.ca.gov)

**RIGHT ELBOW  
LAWN & GARDEN  
BOOTS**



Part #	Gauge	Color	Packaging	Master Carton	
				Quantity	Weight
06118	4-8	Black	Bulk	10	1 lb.
06119	4-8	Red	Bulk	10	1 lb.

**⚠ WARNING:** Cancer and Reproductive Harm [www.P65Warnings.ca.gov](http://www.P65Warnings.ca.gov)

**LEFT ELBOW  
LAWN & GARDEN  
BOOTS**



Part #	Gauge	Color	Packaging	Master Carton	
				Quantity	Weight
06120	4-8	Black	Bulk	10	1 lb.
06121	4-8	Red	Bulk	10	1 lb.

**⚠ WARNING:** Cancer and Reproductive Harm [www.P65Warnings.ca.gov](http://www.P65Warnings.ca.gov)

**MARINE/DUAL  
POST BOOTS**



Part #	Color	Packaging	Master Carton	
			Quantity	Weight
06122	Black	Bulk	10	1 lb.
06123	Red	Bulk	10	1 lb.

**⚠ WARNING:** Cancer and Reproductive Harm [www.P65Warnings.ca.gov](http://www.P65Warnings.ca.gov)

**CABLE TIES**

- Black cable ties are UV resistant

Standard



Heavy Duty



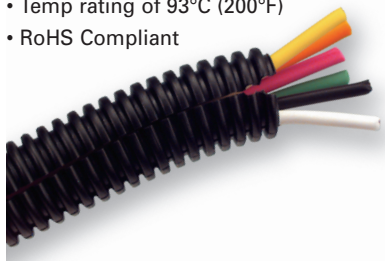
Mounting Tab



Part #	Length	Tensile Strength	Color	Packaging	Master Carton	
					Quantity	Weight
<b>Standard</b>						
05716	6"	40 lbs.	White	Bag of 100	1	1 lb.
05717	7"	50 lbs.	White	Bag of 100	1	1 lb.
05718	11"	50 lbs.	White	Bag of 100	1	1 lb.
05723	14"	50 lbs.	White	Bag of 100	1	1 lb.
05724	6"	40 lbs.	UV Black	Bag of 100	1	1 lb.
05725	7"	50 lbs.	UV Black	Bag of 100	1	1 lb.
05726	11"	50 lbs.	UV Black	Bag of 100	1	1 lb.
05727	14"	50 lbs.	UV Black	Bag of 100	1	1 lb.
<b>Heavy Duty</b>						
05763	14"	120 lbs.	UV Black	Bag of 100	1	1 lb.
05764	24"	175 lbs.	UV Black	Bag of 50	1	1 lb.
<b>Mounting Tab</b>						
05765	8"	50 lbs.	UV Black	Bag of 100	1	1 lb.
05766	11"	50 lbs.	UV Black	Bag of 100	1	1 lb.
05767	15"	120 lbs.	UV Black	Bag of 100	1	1 lb.

**CABLE LOOM**

- Black polyethylene corrugated loom is durable; split for easy installation
- For protection of wires on cars, buses, trucks, and boats
- Coiled and boxed.
- Temp rating of 93°C (200°F)
- RoHS Compliant



Part #	Length	Size	Packaging	Master Carton	
				Quantity	Weight
05749	100'	1/4"	Box of 1	1	2 lbs.
05750	100'	3/8"	Box of 1	1	2 lbs.
05751	100'	1/2"	Box of 1	1	3 lbs.
05752	100'	5/8"	Box of 1	1	3 lbs.
98493	3200'	1/4"	Box of 1	1	32 lbs.
98492	1900'	3/8"	Box of 1	1	27 lbs.
99930	1100'	1/2"	Box of 1	1	21 lbs.
98491	800'	5/8"	Box of 1	1	26 lbs.



**BATTERY CABLE HEAT SHRINKABLE TUBING**

- Economical heat shrink ideal for general purpose applications
- Protects against corrosion
- Use to identify positive and negative
- Acts as a strain relief and prevents abrasion
- Sealant free single wall construction
- Conforms to DOD Mil-I-23053/6 Class 1 and 2, also meets UL-224 125°C specs
- RoHS Compliant

**Material:** Polyolefin

**Shrink Ratio:** 2:1

**Wall thickness after shrinking:** 1/32"

**Operating temperature:**  
-55°C to +135°C (-67°F to +275°F)



Part #	Gauge	Color	Length	Expanded Diameter	Packaging	Master Carton	
						Quantity	Weight
05402	8-2	Black	6"	1/2"	Bag of 6	1	1 lb.
05403	8-2	Red	6"	1/2"	Bag of 6	1	1 lb.
05404	1-2/0	Black	6"	3/4"	Bag of 6	1	1 lb.
05405	1-2/0	Red	6"	3/4"	Bag of 6	1	1 lb.
05406	1/0-4/0	Black	6"	1"	Bag of 6	1	1 lb.
05407	1/0-4/0	Red	6"	1"	Bag of 6	1	1 lb.

**PRIMARY WIRE HEAT SHRINKABLE TUBING**

- Economical heat shrink ideal for general purpose applications
- Protects against corrosion
- Use to identify positive and negative
- Acts as a strain relief and prevents abrasion
- RoHS Compliant

**Material:** Ethylene Vinyl Acetate

**Shrink Ratio:** 2:1

**Operating temperature:**  
-55°C to +105°C (-67°F to +221°F)



Part #	Gauge	Color	Length	Expanded Diameter	Packaging	Master Carton	
						Quantity	Weight
05451	18-14	Black	6"	3/16"	Bag of 25	1	1 lb.
05452	18-14	Red	6"	3/16"	Bag of 25	1	1 lb.
05449	14-10	Black	6"	1/4"	Bag of 25	1	1 lb.
05450	14-10	Red	6"	1/4"	Bag of 25	1	1 lb.
05447	12-8	Black	6"	5/16"	Bag of 25	1	1 lb.
05448	12-8	Red	6"	5/16"	Bag of 25	1	1 lb.

**BULK HEAT SHRINKABLE TUBING**

- Diameter fits wide range of sizes from 24 GA primary wire to heavy 4/0 cable
- Remains flexible after shrink
- RoHS Compliant

**Shrink Ratio:** 3:1

**Wall thickness:** 1/16"

Part #	Gauge	Color	Length	Expanded Diameter	Packaging	Master Carton	
						Quantity	Weight
31130	24 - 18	Black	48"	1/8"	Bulk	225	5 lbs.
31131	24 - 18	Red	48"	1/8"	Bulk	225	5 lbs.
31132	20 - 12	Black	48"	3/16"	Bulk	175	6 lbs.
31133	20 - 12	Red	48"	3/16"	Bulk	175	6 lbs.
31134	18 - 10	Black	48"	1/4"	Bulk	100	4 lbs.
31135	18 - 10	Red	48"	1/4"	Bulk	100	4 lbs.
31136	8 - 6	Black	48"	3/8"	Bulk	55	3 lbs.
31137	8 - 6	Red	48"	3/8"	Bulk	55	3 lbs.
31138	6 - 2	Black	48"	1/2"	Bulk	40	4 lbs.
31139	6 - 2	Red	48"	1/2"	Bulk	40	4 lbs.
31140	4 - 2/0	Black	48"	3/4"	Bulk	25	4 lbs.
31141	4 - 2/0	Red	48"	3/4"	Bulk	25	4 lbs.
31142	2 - 4/0	Black	48"	1"	Bulk	25	6 lbs.
31143	2 - 4/0	Red	48"	1"	Bulk	25	6 lbs.

**SELF-FUSING AUTO TAPE**

- Provides a moisture tight seal
- Insulates to protect wires and splices
- Ideal for high temperature applications
- Alternative to heat shrink tubing
- Completely cures within 24 hours
- RoHS Compliant



Part #	Length	Color	Packaging	Master Carton	
				Quantity	Weight
04366	10'	2 Red/2 Black	Box of 4	1	1 lb.
04367	10'	Black	Clamshell of 1	4	1 lb.
04368	10'	Red	Clamshell of 1	4	1 lb.

# Self-Fusing Auto Tape

*The latest technology in silicone tape. Self-Fusing tape is ideal for almost any application requiring a water-proof seal and is an excellent insulator with high dielectric strength. Uses include marine connections, battery terminals, automotive hoses, color coding, cable splices, and tool grip enhancement.*



- **No sticky adhesive. Tape fuses upon itself when wrapped forming a permanent bond that is both airtight and waterproof**
- **Resists UV, oil, and corrosive chemicals**
- **Stretches to 300%**
- **Insulates 8,000 volts per layer**
- **Can easily be cut away to remove leaving no residue**
- **Temperature range of -65°F to 500°F**
- **Meets or exceeds UL standard 510**
- **Meets MIL-I-46852C Type II Std.**
- **RoHS Compliant**

### BATTERY PROTECTION KIT

**Kit Includes:**

- Terminal protectors
- Battery cleaner brush
- 3/4 oz. can terminal protection spray
- 1 1/8 oz. can cleaner spray
- Hand cleaning towelette



Part #	Packaging	Master Carton	
		Quantity	Weight
00317	Clam Shell Kit	6	1 lb.

Master carton includes clip strip

**WARNING:** Cancer and Reproductive Harm [www.P65Warnings.ca.gov](http://www.P65Warnings.ca.gov)

### BATTERY TERMINAL PROTECTION SPRAY

- Resists battery corrosion and prolongs battery life
- Lead free formula



00322

00320

Part #	Packaging	Master Carton	
		Quantity	Weight
00322	3/4 oz. can, Card of 1	12	2 lbs.
00320	10 oz. can	12	10 lbs.

**WARNING:** Cancer and Reproductive Harm [www.P65Warnings.ca.gov](http://www.P65Warnings.ca.gov)

### BATTERY CLEANER SPRAY

- Penetrates, loosens, and neutralizes all acid corrosion deposits
- Helps eliminate energy loss with regular maintenance



00323

00321

Part #	Packaging	Master Carton	
		Quantity	Weight
00323	1-1/8 oz. can, Card of 1	12	2 lbs.
00321	15 oz. can	12	15 lbs.

**WARNING:** Cancer and Reproductive Harm [www.P65Warnings.ca.gov](http://www.P65Warnings.ca.gov)

### BATTERY CLEANER SPRAY WITH ACID INDICATOR

- Penetrates, loosens, and neutralizes acid corrosion deposits
- Sprays on yellow - leaves pink foam to indicate where acid is present
- Helps eliminate energy loss with regular maintenance



Part #	Packaging	Master Carton	
		Quantity	Weight
00450	11 oz. can	12	11 lbs.

**WARNING:** Cancer and Reproductive Harm [www.P65Warnings.ca.gov](http://www.P65Warnings.ca.gov)





### TERMINAL PROTECTORS

- Terminal protectors extend the life of batteries and terminals
- Chemically treated to help prevent corrosion

Part #	Color	Type	Packaging	Master Carton	
				Quantity	Weight
00237	Black	Top	Jar of 100	6	5 lbs.
01253	Red/Black	Top/Side Combo	Card of 2	24	1 lb.
01940	Red/Black	Top/Side Combo	Jar of 50	6	5 lbs.



01253



00237



01940

### PREMIUM COMBO TOP/SIDE POST TERMINAL PROTECTOR

- Patented design



Part #	Color	Packaging	Master Carton	
			Quantity	Weight
00359	Red/Black	Card of 2	24	2 lbs.

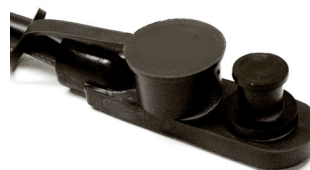
### PROTECTIVE STUD CAPS

- Keeps terminals protected from inadvertent, accidental contact
- Fits 3/8" stud
- Color identifies polarity
- RoHS complaint PVC



Part #	Color	Packaging	Master Carton	
			Quantity	Weight
04892	Red	Bag of 10	1	1 lbs.
04893	Black	Bag of 10	1	1 lbs.

**WARNING:** Cancer and Reproductive Harm [www.P65Warnings.ca.gov](http://www.P65Warnings.ca.gov)





# Hold-downs, Boxes, and Tools



- Hold-downs
- Hold-down Bolts
- Battery Boxes and Trays
- Tools

UNIVERSAL TYPE HOLD-DOWNS

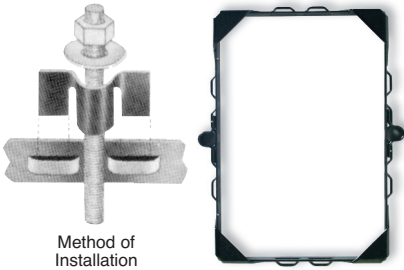


Part #	Description	Packaging	Master Carton	
			Quantity	Weight
00251*	Universal Base Mount	Card of 1	10	5 lbs.
00236*	Cross-Bar 6-7/8" Wide	Clam Shell of 1	10	5 lbs.
00246	Univ Cross-Bar 5-1/8"-7-5/8" Width	Clam Shell of 1	10	3 lbs.
06167*	Univ Cross-Bar 5-1/8"-7-5/8" Width	Bulk	10	2 lbs.
00250*	Cross-Bar Adjust Mount 6-7/8" Width	Clam Shell of 1	10	8 lbs.
00239*	Perimeter 10-1/4" x 6-7/8"	Card of 1	10	6 lbs.
00678 <sup>1</sup> *	Rubber Hold-Down Kit 6-7/8" w/Bolts & Nuts	Card of 1	10	7 lbs.
09645	Front Base Mount Wedge	Clam Shell of 1	10	2 lbs.
09646	Side Base Mount Wedge	Clam Shell of 1	10	2 lbs.

<sup>1</sup>Rubber battery hold down kit includes two 10" J bolts, washers, and nuts

\* **⚠ WARNING:** Cancer and Reproductive Harm [www.P65Warnings.ca.gov](http://www.P65Warnings.ca.gov)

SAFETY GRIP HOLD-DOWNS FOR 6- & 12-VOLT APPLICATIONS



Method of Installation

- Bolts not included. Sold separately, see below.

Part #	Battery Group Size	Dimensions	Packaging	Master Carton	
				Quantity	Weight
06159	24/24F	6 - 7/8" x 10 - 7/8"	Box	1	1 lb.
06160	27	6 - 7/8" x 12 - 1/8"	Box	1	1 lb.
06165	31	6 - 7/8" x 13 - 1/8"	Box	1	1 lb.
06166	31 (for two grp 31 batts)	13 - 3/4" x 13 - 1/8"	Box	1	2 lbs.

**⚠ WARNING:** Cancer and Reproductive Harm [www.P65Warnings.ca.gov](http://www.P65Warnings.ca.gov)

BATTERY HOLD-DOWN BOLTS, WASHERS, & NUTS

- Heavy tempered steel bolts
- Wing nuts for quick, easy assembly
- Washers included



Part #	Dimensions	Type	Packaging	Master Carton	
				Quantity	Weight
00241	6" x 1/4"	J	Card of 2	10	3 lbs.
06153 <sup>1</sup>	6" x 1/4"	J	Bulk	50	5 lbs.
00916	8" x 1/4"	J	Card of 2	10	3 lbs.
06154 <sup>1</sup>	8" x 1/4"	J	Bulk	50	6 lbs.
00242	10" x 1/4"	J	Card of 2	10	4 lbs.
06155 <sup>1</sup>	10" x 1/4"	J	Bulk	50	6 lbs.
00244	12" x 1/4"	J	Card of 2	10	3 lbs.
06157 <sup>1</sup>	12" x 1/4"	J	Bulk	50	9 lbs.
06158	12" x 5/16"	Heavy-Duty J	Bulk	25	6 lbs.
00243	10" x 1/4"	L-Type	Card of 2	10	4 lbs.
06156 <sup>1</sup>	10" x 1/4"	L-Type	Bulk	50	6 lbs.

<sup>1</sup>Wing nuts and washers are bagged separately in carton

**⚠ WARNING:** Cancer and Reproductive Harm [www.P65Warnings.ca.gov](http://www.P65Warnings.ca.gov)

### BATTERY BOXES

- Polypropylene boxes protect battery in marine and commercial applications
- Vented for safety
- Includes all hardware for installation
- Snap lid for secure fit (03009 & 03189 only)

Part #	Group Size	Outside Dimensions (LxWxH)	Inside Dimensions (LxWxH)	Packaging	Master Carton	
					Quantity	Weight
03009	Marine 24	14-5/16" x 9-3/4" x 10-3/4"	10-5/8" x 7-3/16" x 9-3/4"	Bulk	12	24 lbs.
03188	U1	10-1/2" x 7-1/4" x 8-1/2"	8-1/4" x 5-3/8" x 8-1/8"	Bulk	12	16 lbs.
03189	Marine 27/31 <sup>1</sup>	17" x 9-3/4" x 11"	13-1/2" x 7-1/8" x 10"	Bulk	6	15 lbs.

<sup>1</sup>Includes spacer

**WARNING:** Cancer and Reproductive Harm [www.P65Warnings.ca.gov](http://www.P65Warnings.ca.gov)



03009



03188



03189

### UNIVERSAL BATTERY TRAYS

- Made with durable rust and corrosion resistant polypropylene

Part #	Group Size	Dimensions	Packaging	Master Carton	
				Quantity	Weight
00253	24	11-1/2" x 8-1/2"	Sleeve of 1	10	6 lbs.
00252	27/31	14" x 7-7/8"	Sleeve of 1	10	8 lbs.

**WARNING:** Cancer and Reproductive Harm [www.P65Warnings.ca.gov](http://www.P65Warnings.ca.gov)

