



When Protection Counts

ISO 9001 Certified



SAS Safety & Compliance Catalog

SAS Safety Corp. | Tel (800) 262-0200 | Fax (800) 244-1938 | www.sassafety.com



About SAS Safety Corp.

Whether you're a safety manager, business owner or DIY'er, SAS Safety Corp. provides quality safety products and equipment designed to make workplaces safer. As an ISO 9001 Certified company and over 30 years in the business, we are dedicated to protect our most valuable resource: people.

Our Safety Products

We offer a complete line of head-to-toe personal protective equipment; Respiratory, Hearing, Eye, Hand/Body Protection, Ergonomic/Traffic Safety, First-Aid Kits and Spill Control. We understand the importance of meeting customer's needs from the distributor to the end-user. Commitment to your satisfaction is our #1 priority!

Mission Statement

Leadership Excellence

SAS Safety Corp. is committed to providing its customers with quality products and services through continued improvement in technology, process and personnel. Being ISO certified is more than just a certificate; it is about maintaining a quality management system that assures valued customers that they can rely on SAS Safety products.

Hand Protection	2-25
Respiratory Protection	26-46
Hi-Viz Protection	48 - 56
Eye Protection	58 - 73
Hearing Protection	74 - 76
Protective Wear	78 - 81
Head / Face Protection	82 - 83
First Aid	86 -87
Additional Products	84, 89 - 92

Charts

Chemical Resistance Chart, Gloves	11
Lens Color Guide, Safety Eyewear	71
Hearing Chart, SAS	77
First Aid Kit Content Chart	88
Product Part Index	93

Hand Protection



RAVEN™

EXTRA STRENGTH DISPOSABLE GLOVES



Powder Free

Examination Grade

Latex Free

Textured Grip

Single Use Only

Raven™ Extra Strength Disposable Gloves

- Powder-free exam grade nitrile
- Thickness: 6 mil
- Non-latex
- Outstanding strength, wear and dexterity
- Fully textured for enhanced gripping power
- 100 gloves per box

Powder-Free

Item No.	Size
66516	Small
66517	Medium
66518	Large
66519	X-Large
66520	2X-Large

Pack of 3 Pairs

Item No.	Size
66511	Large
66512	X-Large

Clipstrip (25 packs)

Item No.	Size
66511-CS	Large
66512-CS	X-Large



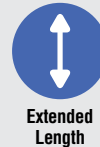
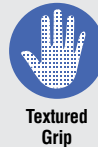
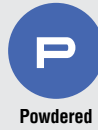
Particular		Raven minimum specifications	ASTM
Palm width (mm)	Small	85 ± 5	80 ± 10
	Medium	95 ± 5	95 ± 10
	Large	105 ± 5	111 ± 10
	X-Large	115 ± 5	120 ± 10
	2X-Large	120 ± 5	N/A
Length (mm)		240 ± 5	min. 220-230
Thickness (Single Wall)		6 mil	2 mil
Tensile Strength	Before aging (MPa)	min. 14	min. 12.5
	After aging (MPa)	min. 14	min. 12.5
Elongation	Before aging (%)	500	500
	After aging (%)	400	400

12"

Extended Length

THICKSTER™

ULTRA THICK DISPOSABLE GLOVES



Thickster™ Ultra Thick Disposable Gloves

- Powdered or powder-free exam grade latex
- Thickness: 14 mil
- 12" length for added protection
- Beaded cuff for easy donning
- Fully textured for superior grip
- Strong yet soft and flexible
- 50 gloves per box

Powder-Free

Item No.	Size
6602-20	Medium
6603-20	Large
6604-20	X-Large
6605-20	2X-Large

Pack of 2 Pairs

Item No.	Size
6603-22	Large
6604-22	X-Large

Powdered

Item No.	Size
6602	Medium
6603	Large
6604	X-Large
6605	2X-Large



Particular		Thickster minimum specifications	ASTM
Palm width (mm)	Medium	97 ± 5	95 ± 10
	Large	107 ± 5	111 ± 10
	X-Large	117 ± 5	120 ± 10
	2X-Large	125 ± 5	N/A
Length (mm)		min. 300 ± 5	min. 220-230
Thickness (Single Wall)		14 mil	3 mil
Tensile Strength	Before aging (MPa)	min. 22	min. 18
	After aging (MPa)	min. 18	min 14
Elongation	Before aging (%)	750	650
	After aging (%)	680	500

DYNA GRIP™

PREMIUM QUALITY DISPOSABLE GLOVES



Powder Free

Examination Grade

Textured Grip

Single Use Only

Dyna Grip™ Premium Quality Disposable Gloves

- Powder-free exam grade latex
- Thickness: 7 mil
- Beaded cuff for easy donning
- Fully textured for excellent grip
- Provides excellent fit, comfort, flexibility, and performance
- 100 gloves per box



Powder-Free

Item No.	Size
650-1001	Small
650-1002	Medium
650-1003	Large
650-1004	X-Large
650-1005	2X-Large

Pack of 3 Pairs

Item No.	Size
650-3003	Large
650-3004	X-Large

Clipstrip

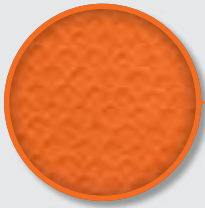
(25 packs)	Size
650-3003CS	Large
650-3004CS	X-Large



Particular		Dyna Grip minimum specifications	ASTM
Palm width (mm)	Small	85 ± 5	80 ± 10
	Medium	95 ± 5	95 ± 10
	Large	105 ± 5	111 ± 10
	X-Large	115 ± 5	120 ± 10
	2X-Large	120 ± 5	N/A
Length (mm)		240 ± 5	min. 220-230
Thickness (Single Wall)		7 mil	3 mil
Tensile Strength	Before aging (MPa)	min. 18	min. 18
	After aging (MPa)	min. 14	min. 14
Elongation	Before aging (%)	min. 650	min. 650
	After aging (%)	min. 500	min. 500

ASTRO-GRIP™

DUAL-SIDED SCALE GRIP DISPOSABLE GLOVES



Textured Grip



6
mil
NITRILE



Powder Free



Textured Grip



Latex Free



Single Use Only



Astro-Grip™ Dual-Sided Scale Grip Disposable Gloves

- Powder-free nitrile
- Thickness: 6 mil
- Dual-sided scale textured surface for superior grip
- High-visibility safety orange color
- Non-latex
- Exceptional chemical and puncture resistance
- Maximum comfort allows for extended wear
- 100 gloves per box

Powder-Free

Item No.	Size
66572	Medium
66573	Large
66574	X-Large
66575	2X-Large



Particular		Astro-Grip minimum specifications	ASTM
Palm width (mm)	Medium	95 ± 5	95 ± 10
	Large	105 ± 5	111 ± 10
	X-Large	115 ± 5	120 ± 10
	2X-Large	120 ± 5	N/A
Length (mm)		240 ± 10	in. 220-230
Thickness (Single Wall)		6 mil	2 mil
Tensile Strength	Before aging (MPa)	min. 18	min. 12.5
	After aging (MPa)	min. 14	min 12.5
Elongation	Before aging (%)	650	500
	After aging (%)	400	400



POWDER-FREE



LATEX-FREE



TEXTURED GRIP



SINGLE USE ONLY



BE SAFE & SEEN WITH

ASTRO-GRIP™

POWDER-FREE NITRILE GLOVES



DUAL SIDED SCALE GRIP

- Latex-free
- Superior puncture & abrasion resistance
- Dual sided scale grip
- Bright orange for high visibility



SUPERIOR DISPOSABLE GLOVES



12"
Extended Length

DERMA-MAX™

EXTENDED LENGTH DISPOSABLE GLOVES

- Extra-long 12" length
- Powder-free exam grade nitrile
- Thickness: 8 mil
- Excellent sensitivity
- Non-latex
- Durable and comfortable
- Textured fingers for better grip
- 50 gloves per box

Powder-Free

Item No.	Size
6606-40	Small
6607-40	Medium
6608-40	Large
6609-40	X-Large
6610-40	2X-Large



Particular		Derma-Max minimum specifications	ASTM
Palm width (mm)	Small	80 ± 10	80 ± 10
	Medium	95 ± 10	95 ± 10
	Large	110 ± 10	111 ± 10
	X-Large	120 ± 10	120 ± 10
	2X-Large	125 ± 10	N/A
Length (mm)		300 ± 10	min. 220-230
Thickness (Single Wall)		8 mil	2 mil
Tensile Strength	Before aging (MPa)	min. 14	min. 12.5
	After aging (MPa)	min. 14	min. 12.5
Elongation	Before aging (%)	500	500
	After aging (%)	400	400



DERMA-LITE™

NITRILE DISPOSABLE GLOVES

- Powdered nitrile or powder-free exam grade nitrile
- Thickness: 5 mil
- Extraordinary strength and puncture resistance
- Non-latex
- Lightly textured
- 100 gloves per box

Powder-Free

Item No.	Size
6606-20	Small
6607-20	Medium
6608-20	Large
6609-20	X-Large

Powdered

Item No.	Size
6606	Small
6607	Medium
6608	Large
6609	X-Large
6610	2X-Large



Particular		Derma-Lite minimum specifications	ASTM
Palm width (mm)	Small	80 ± 10	80 ± 10
	Medium	95 ± 5	95 ± 10
	Large	105 ± 5	111 ± 10
	X-Large	115 ± 5	120 ± 10
	2X-Large	120 ± 5	N/A
Length (mm)		245 ± 5	min. 220-230
Thickness (Single Wall)		5 mil	2 mil
Tensile Strength	Before aging (MPa)	min. 17	min. 12.5
	After aging (MPa)	min. 14	min. 12.5
Elongation	Before aging (%)	min. 500	min. 500
	After aging (%)	min. 450	min. 400



DEXTERA™

EXAMINATION GRADE LATEX DISPOSABLE GLOVES

- Powder-free exam grade latex
- Thickness: 10 mil (Dextera EX)
- Thickness: 5 mil (Dextera)
- Dextera EX offers an extended beaded cuff
- Provides maximum comfort for extended wear
- Lightly textured
- Durable and comfortable
- 50 gloves per box (Dextera EX)
- 100 gloves per box (Dextera)

Dextera EX

Item No.	Size	Dextera Item No.	Size
6501-40	Small	6501-20	Small
6502-40	Medium	6502-20	Medium
6503-40	Large	6503-20	Large
6504-40	X-Large	6504-20	X-Large
6505-40	2X-Large		

DEXTERA EX



DEXTERA



Particular		Dextera EX minimum specifications	Dextera minimum specifications	ASTM
Palm width (mm)	Small	82 - 87	80 ± 5	80 ± 10
	Medium	93 - 99	90 ± 5	95 ± 10
	Large	104 - 110	100 ± 5	111 ± 10
	X-Large	110 - 115	110 ± 5	120 ± 10
	2X-Large	114 - 120	N/A	N/A
Length (mm)		min. 280	240 ± 5	min. 220-230
Thickness (Single Wall)		10 mil	5 mil	3 mil
Tensile Strength	Before aging (MPa)	min. 18	min. 17	min. 18
	After aging (MPa)	min. 14	min. 15	min. 14
Elongation	Before aging (%)	min. 650	min. 650	min. 650
	After aging (%)	min. 500	min. 600	min. 500



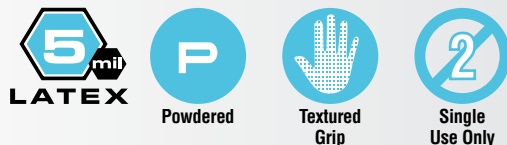
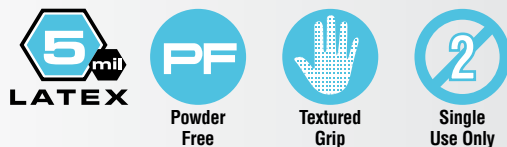
VALUE-TOUCH™

LATEX DISPOSABLE GLOVES

- Powdered or powder-free latex
- Thickness: 5 mil
- Stretches and conforms for superior fit and feel
- Excellent touch sensitivity
- Lightly textured
- Economical latex protection
- 100 gloves per box

Powder-Free

Item No.	Size	Powdered Item No.	Size
6591-20	Small	6591	Small
6592-20	Medium	6592	Medium
6593-20	Large	6593	Large
6594-20	X-Large	6594	X-Large



Particular		Value-Touch minimum specifications	ASTM
Palm width (mm)	Small	85 ± 5	80 ± 10
	Medium	95 ± 5	95 ± 10
	Large	105 ± 5	111 ± 10
	X-Large	115 ± 5	N/A
Length (mm)		230 ± 5	min. 220-230
Thickness (Single Wall)		5 mil	3 mil
Tensile Strength	Before aging (MPa)	min. 14	min. 14
	After aging (MPa)	min. 14	min. 14
Elongation	Before aging (%)	min. 500	min. 500
	After aging (%)	min. 500	min. 500

DERMA-PRO™

BLACK NITRILE DISPOSABLE GLOVES



- Powder-free exam grade nitrile
- Provides comfort fit and durable wear
- Non-latex
- Superior strength & puncture resistance
- Made from component materials which comply with FDA regulations for food contact. 21 CFR 170-199
- Box of 100 gloves

Item No.	Size
66541	Small
66542	Medium
66543	Large
66544	X-Large
66545	2X-Large

FDA Food Compliant

Particular		Derma-Pro minimum specifications	ASTM
Palm width (mm)	Small	85 ± 5	80 ± 10
	Medium	95 ± 5	95 ± 10
	Large	105 ± 5	111 ± 10
	X-Large	115 ± 5	120 ± 10
	2X-Large	125 ± 5	120 ± 10
Length (mm)		240 ± 5	N/A
Thickness (Single Wall)		4 mil	2 mil
Tensile Strength	Before aging (MPa)	min. 14	min. 12.5
	After aging (MPa)	min. 14	min. 12.5
Elongation	Before aging (%)	500	500
	After aging (%)	400	400



Powder Free



Examination Grade



Textured Grip



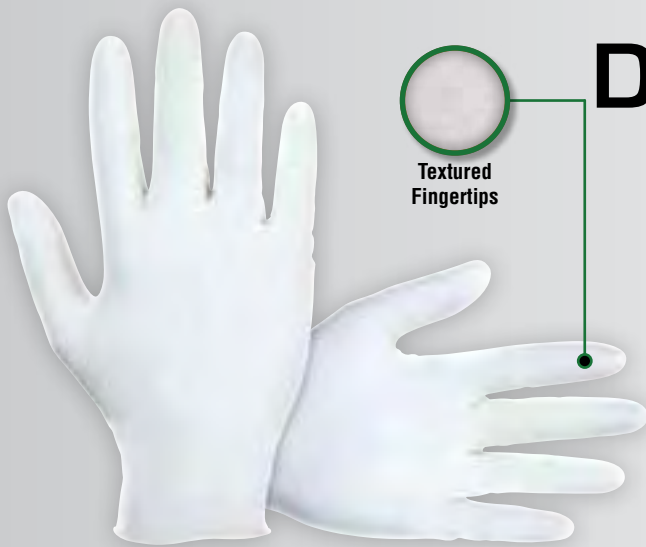
Latex Free



Single Use Only



Food Handling



Textured Fingertips

DERMA-DEFENDER™

POWDER-FREE NITRILE DISPOSABLE GLOVES

- Powder-free exam grade nitrile
- Textured fingertips for better grip
- For food handling
- Made from component materials which comply with FDA regulations for food contact. 21 CFR 170-199
- 100 gloves per box

Item No.	Size
SAS 66561	Small
SAS 66562	Medium
SAS 66563	Large
SAS 66564	X-Large

FDA Food Compliant

Particular		Derma-Defender minimum specifications	ASTM
Palm width (mm)	Small	85 ± 5	80 ± 10
	Medium	95 ± 5	95 ± 10
	Large	105 ± 5	111 ± 10
	X-Large	115 ± 5	120 ± 10
Length (mm)		245 ± 5	N/A
Thickness (Single Wall)		3-4 mil	3 mil
Tensile Strength	Before aging (MPa)	min. 14	min. 18
	After aging (MPa)	min. 14	min 14
Elongation	Before aging (%)	500	500
	After aging (%)	400	400



Powder Free



Examination Grade



Latex Free



Textured Grip



Single Use Only



Food Handling





VINYL-GUARD™

LATEX-FREE DISPOSABLE GLOVES

- Powder-free exam grade vinyl
- Designed for consistent fit and flexibility
- Smooth surface for natural tactile sensitivity
- Rolled cuff added for strength
- Made from component materials which comply with FDA regulations for food contact. 21 CFR 170-199
- 100 gloves per box

Item No.	Size
6506-20	Small
6507-20	Medium
6508-20	Large
6509-20	X-Large

FDA Food Compliant



Particular		Vinyl-Guard minimum specifications	ASTM
Palm width (mm)	Small	85 ± 3	80 ± 10
	Medium	95 ± 3	95 ± 10
	Large	105 ± 3	111 ± 10
	X-Large	115 ± 10	120 ± 10
Length (mm)		230 ± 5	min. 230
Thickness (Single Wall)		4 mil	3 mil
Tensile Strength	Before aging (MPa)	min. 10	min. 9
	After aging (MPa)	min. 10	min 9
Elongation	Before aging (%)	300	300
	After aging (%)	300	300

Chemical Resistance Chart

This Chemical Resistance Chart is intended to provide general information about the reactions of different glove materials to the chemicals listed. SAS Safety gloves have not been individually tested against these chemicals. Variability in glove thickness, chemical concentration, temperature and length of exposure to chemicals will affect the performance.

Rating	Color
Excellent	Green
Good	Light Green
Fair	Yellow
Poor	Orange
NR*	Red

* Not Recommended

Chemical	Neoprene	Nitrile	Latex	PVC	Chemical	Neoprene	Nitrile	Latex	PVC	Chemical	Neoprene	Nitrile	Latex	PVC	Chemical	Neoprene	Nitrile	Latex	PVC
Acetaldehyde	E	P	F	NR	Cyclohexane	F	E	P	P	Isopropyl Alcohol*	E	E	E	G	Paint Remover	G	G	F	P
Acetic Acid	E	G	G	F	Cyclohexanol	E	E	P	G	Kerosene	E	E	P	F	Palmitic Acid	E	G	G	G
Acetone	G	NR	G	NR	Dibutyl Phthalate	F	G	P	G	Lactic Acid	E	E	E	E	Pentachlorophenol	E	E	P	F
Acetonitrile	F	NR	F	NR	Diethylamine	P	F	NR	NR	Lauric Acid	E	E	G	F	Pentane	E	E	P	NR
Ammonium Hydroxide<30%	E	E	G	E	Di-Isobutyl Ketone	P	E	P	P	Linoleic Acid	E	E	P	G	Perchloric Acid 60%	E	E	P	E
Amyle Acetate	NR	E	F	P	Dimethyl Formamide (DMF)	G	NR	E	NR	Linseed Oil	E	E	P	E	Potassium Hydroxide <50%*	E	G	E	E
Amyl Alcohol	P	G	G	NR	Dimethyl Sulfoxide (DMSO)	E	E	E	NR	Maleic Acid	E	E	P	G	Printing Ink	G	E	G	F
Aniline	G	NR	P	F	Dicotyl Phthalate (DOP)	G	G	P	NR	Methyl Acetate	G	P	P	NR	Propyl Acetate	P	F	P	NR
Animal Fats	E	E	P	G	Dioxane	NR	NR	NR	NR	Methyl Alcohol	E	E	E	G	Propyl Alcohol	E	E	E	F
Battery Acids	E	E	G	E	Ethyl Acetate	F	NR	P	NR	Methylamine	G	E	E	E	Perchloroethylene	NR	G	NR	NR
Benzaldehyde	NR	NR	F	NR	Ethyl Alcohol	E	E	E	G	Methyl Bromide	NR	NR	NR	NR	Phenol	E	NR	G	G
Benzene	NR	P	NR	NR	Ethylene Dichloride	NR	NR	P	NR	Methylene Chloride	NR	NR	NR	NR	Phosphoric Acid*	E	E	G	G
Benzoyl Chloride	NR	NR	P	NR	Ethylene Glycol	E	E	E	E	Methyl Cellulosolve	E	F	P	-	Picric Acid	E	E	G	E
Butane	F	E	P	P	Ethyl Ether	E	E	NR	NR	Methyl Ethyl Ketone (MEK)	G	NR	G	NR	Propylene Oxide	NR	NR	P	NR
Butyl Acetate	NR	F	P	NR	Ethylene Trichloride	P	P	P	NR	Methylisobutyl Ketone	NR	P	F	NR	Rubber Solvent	G	E	NR	NR
Butyl Alcohol	E	P	E	G	Formaldehyde	E	E	E	E	Methyl Methacrylate	NR	P	P	NR	Sodium Hydroxide <50%	E	G	E	G
Butyl Cellulosolve*	E	E	E	NR	Formic Acid	E	F	E	E	Mineral Oil	E	E	P	F	Stoddard Solvent	E	E	P	NR
Carbon Acid	E	P	P	G	Freon	G	F	NR	NR	Mineral Spirits	G	E	NR	F	Styrene*	NR	NR	NR	NR
Carbon Disulfide	NR	NR	NR	NR	Furfural	G	NR	E	NR	Monoethanolamine	E	E	G	E	Sulfuric Acid 95%	F	G	NR	NR
Carbon Tetrachloride	P	G	NR	NR	Gasoline	P	E	NR	P	Morpholine	P	NR	G	NR	Tannic Acid	E	E	E	E
Castor Oil	E	E	E	E	Glycerine	E	E	E	E	Muriatic Acids	E	G	G	G	Tetrahydrofuran (THF)	NR	NR	NR	NR
Cellosole Acetate	E	G	G	NR	Hexane	E	E	NR	NR	Naptha V.M and P.	G	E	NR	P	Toluene	P	G	NR	NR
Chloronaphalens	NR	F	NR	NR	Hydraulic Fluid Petro. Based	F	E	P	G	Nitric Acid <30%	E	P	G	G	Toluene Di-Isocyanate (TDI)	NR	NR	P	P
Chlorobenzene	NR	NR	NR	NR	Hydraulic Fluid Easter Based	P	P	P	P	Nitric Acid 70%	G	NR	F	F	Trichlorethylene (TCE)	P	G	NR	NR
Chloroform	F	F	NR	NR	Hydrazine 65%	E	E	G	E	Nitrile Acid Red Fuming	NR	NR	P	P	Tricrestyl Phosphate (TCP)	F	E	G	F
Chloronaphalens	NR	F	NR	NR	Hydrochloric Acid*	G	E	E	E	Nitrile Acid White Fuming	NR	NR	P	P	Triethanolamine 85% (TEA)	E	E	G	E
Chloroethene VG	NR	F	NR	P	Hydrofluoric Acid	G	E	E	E	Nitrobenzene	NR	NR	P	NR	Tung Oil	E	E	NR	F
Chromic Acid	F	F	NR	G	Hydrogen Peroxide	E	E	E	E	Nitromethane	E	F	G	P	Turbine Oil	E	G	P	F
Citric Acid	E	E	E	E	Hydroquinone	G	E	E	E	Nitropropane	G	NR	E	NR	Turpentine	G	E	P	P
Cottonseed Oil	E	E	P	G	Isobutyl Alcohol	E	E	E	F	Octyl Alcohol	E	E	G	F	Vegetable Oil	E	E	P	F
Cresols	G	G	P	F	Iso-Octane	E	E	NR	P	Oleic Acid	E	E	P	F	Xylene	P	G	NR	NR
Cutting Oil	E	E	F	P															

*Warning: Protective gloves and other protective apparel selection must be based on the user's assessment of the workplace hazards. Glove and Apparel materials do not provide unlimited protection against all chemicals. It is the user's responsibility to determine before use that the Glove and Apparel will resist permeation and degradation by the chemicals (including chemical mixtures) in the environment of intended use. Failure by the user to select the correct protective gloves can result in injury, sickness or death.

SAFECUT™

CUT RESISTANT GLOVES

When it comes to the workplace or home, being safe includes the importance of hand protection. According to the U.S. Bureau of Labor Statistics, injuries to the hand, wrist and finger account for the second-highest (23%) number of workplace injuries, with approximately 100,000 lost-time injuries annually. Our cut resistant gloves are crafted with top-quality materials, providing you with added protection when handling sharp edges (glass, metal, ceramics and other materials).

Cut Resistance

Cut resistant gloves are crafted to protect hands from direct contact with sharp-edged objects such as glass, metal, ceramics, box cutters and other materials. Cut resistance is determined by a CPPT machine/device in accordance with ASTM F1790-05 and is often used to compare the safety of various products. Performance characteristics can also be affected by a material's weight and coatings applied to the outside surface. Lighter weight styles are typically more flexible, resulting in less hand fatigue, while their heavier counterparts will generally provide the wearer with more cut and abrasion protection. Coated gloves enhance grip, especially on slippery surfaces.

Coatings

Latex - Very high elasticity and grip, great tear resistance, resists alcohol, performs poorly around most hydrocarbon and organic solvents (i.e. gasoline), can cause allergic reactions.

Micro-Foam Nitrile - Synthetic version of latex, three times more puncture resistant than rubber, stands up well to oil, additional foam coating helps increase gripping power.

Polyurethane (PU) - Grips well without being sticky, great breathability and dexterity, resists oil, solvents, gasoline, fats, greases, ozone and oxidation.

Poly-Vinyl Chloride (PVC) - Grips well without being sticky, great breathability and dexterity, resists oil, solvents, gasoline, fats, greases, ozone and oxidation.

Materials

Knit lined - Cotton or synthetic material bonded to inside surface of glove. Absorbs perspiration, adds temperature protection.

Aramid - A class of strong, heat and abrasion resistant synthetic fibers.

HPPE - High Performance Polyethylene (HPPE) is knitted with acrylic fibers to create a form fitting, moisture wicking, cold weather, and cut resistant glove.

Gauge - The gauge number refers to the size and type of needles used in a seamless knitting machine to produce a glove. In simple terms, the higher the gauge number, the thinner the glove (i.e. a 13 gauge glove is typically thinner than a 10 gauge glove). Higher gauge gloves are typically more form fitting and dexterous, while lower gauge gloves are typically bulkier and less dexterous.

Cut Levels

- 5** Extreme cut hazards: heavy metal stamping, plate glass handling, meat and poultry, some pulp and paper applications
- 4** High cut hazards: metal stamping, sheet metal handling, glass handling, food service
- 3** Moderate cut hazards: light metal stamping, light-duty glass handling applications
- 2** Low cut hazards: construction, automotive assembly, packaging, some masonry applications
- 1** Nuisance cuts: paper cuts, automotive maintenance, parts assembly, material handling



HPPE Knit Glove, PVC Grip

- 13-gauge High Performance Polyethylene knit shell
- PVC fingertips and palm dots for superior grip
- Comfortable and flexible
- Meets current ASTM F1790-05 Standard for Cut Level 3

Bulk

Item No.
6771-02
6771-03
6771-04
6771-05

Size
Medium
Large
X-Large
2X-Large





Aramid® Yarn Glove, Latex Palm

- 10-gauge Aramid® yarn shell
- Crinkle blue latex on palm
- Constructed with heat-resistant synthetic fibers
- Meets current ASTM F1790-05 Standard for Cut Level 3

Bulk Item No.	Size	Retail Item No.	Size
6772-02	Medium	6772-12	Medium
6772-03	Large	6772-13	Large
6772-04	X-Large	6772-14	X-Large
6772-05	2X-Large	6772-15	2X-Large



HPPE Knit Glove, Nitrile Palm

- 13-gauge High Performance Polyethylene knit shell
- Micro-foam nitrile coating on palm
- Constructed with heat-resistant synthetic fibers
- Comfortable and superior performance
- Meets current ASTM F1790-05 Standard for Cut Level 3

Bulk Item No.	Size	Retail Item No.	Size
6773-02	Medium	6773-12	Medium
6773-03	Large	6773-13	Large
6773-04	X-Large	6773-14	X-Large
6773-05	2X-Large	6773-15	2X-Large



HPPE Knit Glove, PU Palm

- 13-gauge High Performance Polyethylene knit shell
- Polyurethane coating on palm
- Constructed with heat-resistant synthetic fibers
- Superior grip and resistant to oils, solvents and grease
- Meets current ASTM F1790-05 Standard for Cut Level 3

Bulk Item No.	Size
6775-02	Medium
6775-03	Large
6775-04	X-Large
6775-05	2X-Large



Aramid® Yarn Glove, Nitrile Palm

- 13-gauge Aramid® yarn shell
- Micro-foam nitrile coating on palm
- Constructed with heat-resistant synthetic fibers
- Meets current ASTM F1790-05 Standard for Cut Level 3

Bulk Item No.	Size
6776-02	Medium
6776-03	Large
6776-04	X-Large
6776-05	2X-Large





Polyurethane Coated Palm

- 13-gauge seamless nylon knit shell
- Polyurethane coating on palm for added gripping power
- Comfortable and flexible
- Excellent abrasion resistance and strength
- Textured palm for better gripping power when handling oil, solvents, gasoline and grease

Bulk Item No.	Retail Item No.	Size
640-1012	640-1022	Medium
640-1013	640-1023	Large
640-1014	640-1024	X-Large
640-1015	640-1025	2X-Large



Nitrile Coated Palm

- 15-gauge seamless nylon shell
- Liquid dipped 100% nitrile palm coat
- Knit back helps keep hand cooler
- Coated palm offers superior grip, abrasion and puncture resistance

Bulk Item No.	Retail Item No.	Size
N/A	640-1907	Small
640-1008	640-1908	Medium
640-1009	640-1909	Large
640-1010	640-1910	X-Large
640-1011	640-1911	2X-Large



Cotton/Poly Knit – Latex Coated Palm

- 10-gauge seamless shell
- Green latex crinkle finish palm coat for grip
- Medium weight cotton/polyester shell ensures breathability
- Natural rubber provides abrasion resistance

Bulk Item No.	Retail Item No.	Size
670-6637	6637	Medium
670-6638	6638	Large
670-6639	6639	X-Large



Cotton/Poly Knit – Latex Coated Palm

- 10-gauge seamless shell
- Smooth, blue, latex palm dip coating
- Lightweight cotton/polyester shell
- Knit is lightweight and breathable for all day comfort
- Natural rubber provides abrasion resistance

Bulk Item No.	Size
641-1010	One-size-fits-most



Nitrile

- 13" length
- Thickness: 15 mil
- Puncture and abrasion resistant
- Tough against chemicals, solvents, hazardous liquids, PVC cements or standing water
- Use during chemical processing, oil refining and handling petrochemicals
- Textured for superior grip on wet or slippery material
- Flock-lined, unsupported nitrile

Item No.	Size
6532	Medium
6533	Large
6534	X-Large



Deluxe Neoprene

- 12 1/2" length
- Thickness: 20 mil
- Abrasion and cut resistant
- Provides excellent resistance against chemicals, oils, acids, caustics and solvents
- Raised-diamond texture for extra gripping power
- Cotton flock lined for comfort

Item No.	Size
6557	Medium
6558	Large
6559	X-Large



PVC

- 13" length
- Rough finish improves grip in both wet and dry applications
- Use during chemical processing, oil refining handling petrochemicals, and abrasive materials coated with oils, greases and acids
- Knit interlock liner

Item No.	Size
6552	Medium
6553	Large
6554	X-Large



Extended Length Neoprene

- 17" length
- Extended length for added protection
- Tough exterior to protect against cuts and abrasions
- Comfortable cotton knit lining absorbs moisture
- Resistant against oils, acids, caustics, alcohols and solvents

Item No.	Size
6588	One-size-fits-most





MX gloves are high-performance for impact resistance, dexterity and fit. Protects against blisters, cuts, abrasions and blunt impact, while offering maximum comfort and fit. Perfect for handling an array of applications such as packaging, assembly, automotive, construction and equipment handling. Each glove is uniquely engineered to provide the best in quality, fit and feel. Protect the hands that get the job done.

Impact Resistant 40g Thinsulate™ Hipora® Glove

- Direct injected thermoplastic rubber (TPR) for impact resistance
- Synthetic leather knuckle guard and palm
- 40g 3M™ Thinsulate™ material for cold weather protection
- Hipora® breathable waterproof and windproof liner insert
- Abrasion resistant padded material patches on palm and finger tips

Yellow Item No.	Black Item No.	Size
6720-02	6720-22	Medium
6720-03	6720-23	Large
6720-04	6720-24	X-Large
6720-05	6720-25	2X-Large



Impact Resistant Padded Palm Glove

- Direct injected thermoplastic rubber (TPR) on fingers and knuckles
- Synthetic leather padded palm and fingertip patches
- Form-fitting Spandex top for comfort and fit
- Elasticized wrist with hook-and-loop closure for comfort

Yellow Item No.	Black Item No.	Size
6721-02	6721-22	Medium
6721-03	6721-23	Large
6721-04	6721-24	X-Large
6721-05	6721-25	2X-Large



Black



Impact Resistant Grip Palm Glove

- Direct injected thermoplastic rubber (TPR) on fingers and knuckles
- Synthetic leather palm patch and fingertips for superior grip
- Form-fitting Spandex top for comfort and fit
- Elasticized wrist with hook-and-loop closure for comfort

Yellow Item No.	Black Item No.	Size
6722-02	6722-22	Medium
6722-03	6722-23	Large
6722-04	6722-24	X-Large
6722-05	6722-25	2X-Large



Black



Impact Resistant Cut-Thumb/Index Finger Glove

- Cut-thumb and index finger for dexterity
- Direct injected thermoplastic rubber (TPR) on fingers and knuckle
- Form-fitting Spandex top for comfort and fit
- Synthetic leather palm patch and fingertips for superior grip
- Elasticized wrist with hook-and-loop closure for comfort

Yellow Item No.	Black Item No.	Size
6724-02	6724-22	Medium
6724-03	6724-23	Large
6724-04	6724-24	X-Large
6724-05	6724-25	2X-Large



Black



Mechanic's Impact Gloves

- Breathable stretch nylon top for all day comfort
- Padded knuckle protection
- Synthetic leather padded palm, perfect for use with pneumatic tools
- Hook-and-loop cuff closure

Item No.	Size
6712	Medium
6713	Large
6714	X-Large
6715	2X-Large



Slip-On Glove

- Elastic cuff for comfortable wear
- Stretch nylon top for fit and comfort
- Durable synthetic leather palm
- Protects against blisters, cuts and abrasions
- Durable knuckle padding

Item No.	Size
6342	Medium
6343	Large
6344	X-Large
6345	2X-Large



Material Handling Gloves



- Silicone textured palm and fingers for a non-slip grip
- Breathable stretch nylon top for all day comfort
- Synthetic leather palm construction
- Hook-and-loop cuff closure
- Great for box handling, warehouse and installation work

Item No.	Size
6312	Medium
6313	Large
6314	X-Large
6315	2X-Large



Cowhide Gloves



- Stretch nylon top with leather palm
- Hooked-and-loop closure, comfort fit
- Leather palm and fingertip
- Soft and comfortable to wear

Item No.	Size
6762	Medium
6763	Large
6764	X-Large
6765	2X-Large

Mechanic's Gloves

- Excellent dexterity and flexibility for intricate work
- Outstanding gripping power
- Great protection against blisters, cuts and abrasions
- Stretch top for great flexibility and ease of movement
- Synthetic leather palm construction



Black Item No.	Size
6652	Medium
6653	Large
6654	X-Large
6655	2X-Large



Blue Item No.	Size
6662	Medium
6663	Large
6664	X-Large
6665	2X-Large



Red Item No.	Size
6672	Medium
6673	Large
6674	X-Large
6675	2X-Large



Yellow Item No.	Size
6632	Medium
6633	Large
6634	X-Large
6635	2X-Large



All Black Item No.	Size
6352	Medium
6353	Large
6354	X-Large

Leathers and Knits



Leather Driver

- Top grain pigskin
- Straight thumb
- General purpose protection
- Strong and comfortable leather
- Excellent protection for grinding, cutting and dismantling

Bulk Item No.	Retail Item No.	Size
670-6526	6526	Medium
670-6527	6527	Large
670-6528	6528	X-Large



Split Leather Palm

- Standard side-split leather
- Full leather palm and index finger
- Cotton back with leather knuckle strap and elastic
- 2 1/2" rubberized safety cuff
- Gunn cut

Bulk Item No.	Retail Item No.	Size
670-6529	6529	One-size-fits-most



Knit Wrist Leather Palm

- Clute cut
- Full leather palm
- Blue/red striped cotton back
- Knit wrist
- Straight thumb

Bulk Item No.	Retail Item No.	Size
670-6519	6519	One-size-fits-most



String Knit

- 7-gauge string knit
- Comfortable breathability
- Lightweight cotton/poly knit

Item No.
6566

Size
One-size-fits-most



Cotton Canvas

- 8 oz. cotton canvas
- General purpose glove
- Breathable, soft cotton material

Item No.
6565

Size
One-size-fits-most



Brown Jersey

- Strong and comfortable hand protection
- 8 oz. brown jersey with knit wrist
- Breathable cotton provides cool comfort in summer and warmth in cooler months
- Ideal for general purpose applications and for protection against abrasions

Bulk
Item No.
670-6563

Retail
Item No.
6563

Size
One-size-fits-most

Kevlar™ Heat Sleeve

- 14" length of 100% Kevlar™
- Improved comfort and protection against cuts and abrasions
- Heat resistant
- May be worn with gloves
- Washable and reversible

Item No.
6701

Size
One-size-fits-most



Electric Service Glove Class 0



- Made with Type 1 natural rubber
- Class 0 low voltage protection up to 1,000 Volts AC/1,500 Volts DC
- 12" length with straight cuff and smooth finish
- Meets or exceeds current ASTM D120-09 specifications, OSHA 29CFR 1910.269 regulations

Item No.	Size
6417	Medium (8)
6418	Large (9)
6419	X-Large (10)
6420	2X-Large (11)

Retesting Available

Call today to get your SAS Safety or other brand of electric service glove (Class 00-4) re-tested.
1-800-262-0200



Leather Protector Gloves

- Goatskin leather provides optimal glove durability
- Extends the life of rubber electric service gloves
- Meets ASTM F696-06 standards
- * **WARNING: Do not use leather protectors alone for protection against electric shock.**

Item No.	Size
6467	Fits over 6417
6468	Fits over 6418
6469	Fits over 6419
6470	Fits over 6420



Glove Storage Bag

- 14 oz. cotton canvas
- Two layered pockets allow the storage for service gloves and protective leather gloves
- Hook and loop closure
- Heavy-duty belt loops
- Measures: 14 3/8" H x 8 5/8" W

Item No.	Size
6465	One-size-fits-most



Electric Service Glove Kits

Contents:
 Electrical Service Gloves 1 pr.
 Protective Over Gloves 1 pr.
 Protective Glove Bag 1 ea.

Item No.	Size
6477	Medium
6478	Large
6479	X-Large
6480	2X-Large

CATEGORIES OF SAFETY WORK GLOVES

It is generally recognized that there are six major categories of safety gloves. The differences can be defined by the potential hazards they defend against and often the material used for their construction. The general classes of safety work gloves are:

Disposables – Excellent for one-time use while still providing “fingertip sensitivity” required by medical environments, industrial laboratories and clean rooms – often made of latex, nitrile or vinyl.

Chemical resistant – Protect the wearer from chemical penetration to the skin – usually made of latex, polyvinyl chloride (PVC), neoprene, butyl or nitrile.

Cut resistant – Using Kevlar™, steel knit designs or synthetic yarns (i.e. HPPE or Aramid), these items lessen the chance of cutting the skin with sharp objects or moving machine blades.

Voltage resistant – Protect the wearer from injury by active electrical voltage – usually made of rubber, a very effective non-conductor material.

Temperature resistant – Designed to protect the wearer from temperature extremes (hot or cold), arcs, flames and torch or welding activities.

General work – Give you protection against common workplace hazards (cuts, punctures, abrasions, etc.) – made of a variety of materials including cotton, leather, synthetics or even a combination of these.

As with all personal protective equipment (PPE), identify the potential threats you face, find the best disposable gloves or industrial work gloves available and then use them correctly. Whether you need general purpose leather safety gloves or high tech protection from a Kevlar™ work sleeve, correct use will eliminate many of the hazardous risks you face on the job.

ADVANTAGES OF SYNTHETIC OR LEATHER INDUSTRIAL WORK GLOVES

Some of the benefits of synthetic safety gloves:

Flexibility – Makes excellent disposable gloves for medical, laboratory and chemical environments.

Strength – Whether you choose Kevlar™ for cut resistance, Thinsulate™ for protection against wind and cold or a combination of materials, synthetics provide strong protection against a variety of hazards.

Weight – Most synthetic industrial work gloves are lighter than leather counterparts, which can be very beneficial over long work days.

Leather safety gloves also provide valuable advantages to the user including:

Durability – Leather is durable, robust and provides long lasting material life.

Breathability – Unlike most synthetic material, leather “breathes” giving the wearer much more comfort while being substantially cooler in hot conditions.

Allows effective “combinations” – Because of its malleability, leather is a perfect outer shell that securely attaches to linings such as electrical safety gloves with leather outer shells and natural rubber linings.

DIFFERENCES IN MATERIALS BETWEEN DISPOSABLE GLOVES



Latex: Latex gloves are made of material originating from the latex ducts of rubber trees. Even with the advent of synthetic materials, latex still remains the most elastic, resilient and consistent fitting material on the market today.



Nitrile: Nitrile is a synthetic polymer that has many natural rubber latex characteristics. Nitrile gloves are free of any latex proteins. Nitrile gloves provide better chemical and biohazard protection compared to latex gloves. Also, nitrile gloves are more resistant to punctures and tears compared to natural latex. Being a synthetic material, nitrile has a longer shelf life than natural rubber.



Vinyl: Vinyl is composed of a synthetic non-biodegradable, protein-free material that includes polyvinyl chloride and plasticizers. Vinyl gloves are best used as an economical option for handling non-hazardous materials and chemicals.

Respiratory Protection



BreatheMate™

Silicone Half-Mask Dual Cartridge Respirator



Coming 2016



Silicone Multi-Use Dual Cartridge Respirator

- Silicone face piece offers exceptional comfort
- Lightweight material reduces user fatigue
- Unique head strap design allows for a secure non-slip fit



Mask Combos:

Item No.	Size	Cartridge / Filter
321-1215	Small	Organic vapor / R95 particulate
321-2215	Medium	Organic vapor / R95 particulate
321-3215	Large	Organic vapor / R95 particulate

Mask Only:

Item No.	Size	Description
321-1017	Small	Half-Mask with Filter Retainers
321-2017	Medium	Half-Mask with Filter Retainers
321-3017	Large	Half-Mask with Filter Retainers

Replacement Parts:

Item No.	Description	Quantity
300-1001	Organic Vapor Cartridge	Box of 6 each
300-1060	N95 Particulate Filter	Box of 12 pair
300-1070	R95 Particulate Filter	Box of 12 pair
300-1090	P95 Particulate Filter	Pack of 3 pair
300-1080	P100 Filter	Box of 6 each
300-1085	P100 Pancake Filter	Box of 6 each
300-1717	Filter Retainer	1 Pair
300-3525	Service Kit	1 Kit

BreatheMate™

Half-Mask Dual Cartridge Respirator



Multi-Use Dual Cartridge Respirator

- Comfortable fit and superior protection
- Lightweight material reduces user fatigue
- Unique head strap design allows for a secure non-slip fit

NIOSH approved:

TC-84A-6665 OV/N95
TC-84A-6753 OV/R95



Mask Combos:

Item No.	Size	Cartridge / Filter
311-1115	Small	Organic vapor / N95 particulate
311-2115	Medium	Organic vapor / N95 particulate
311-3115	Large	Organic vapor / N95 particulate
311-1215	Small	Organic vapor / R95 particulate
311-2215	Medium	Organic vapor / R95 particulate
311-3215	Large	Organic vapor / R95 particulate

Mask Only:

Item No.	Size	Description
311-1017	Small	Half-Mask with Filter Retainers
311-2017	Medium	Half-Mask with Filter Retainers
311-3017	Large	Half-Mask with Filter Retainers

Replacement Parts:

Item No.	Description	Quantity
300-1001	Organic Vapor Cartridge	Box of 6 each
300-1060	N95 Particulate Filter	Box of 12 pair
300-1070	R95 Particulate Filter	Box of 12 pair
300-1090	P95 Particulate Filter	Pack of 3 pair
300-1080	P100 Filter	Box of 6 each
300-1085	P100 Pancake Filter	Box of 6 each
300-1717	Filter Retainer	1 Pair
300-3525	Service Kit	1 Kit

BreatheMate™

P100 Half-Mask Dual Cartridge Respirator



P100 Multi-Use Dual Cartridge Respirator

- Comfortable fit and superior protection
- Lightweight material reduces user fatigue
- Unique head strap design allows for a secure non-slip fit

NIOSH approved:
TC-84A-6768 P100



Mask Combos:

Item No.	Size	Filter
311-1300	Small	P100
311-2300	Medium	P100
311-3300	Large	P100

Mask Only:

Item No.	Size	Description
311-1017	Small	Half-Mask with Filter Retainers
311-2017	Medium	Half-Mask with Filter Retainers
311-3017	Large	Half-Mask with Filter Retainers

Replacement Parts:

Item No.	Description	Quantity
300-1001	Organic Vapor Cartridge	Box of 6 each
300-1060	N95 Particulate Filter	Box of 12 pair
300-1070	R95 Particulate Filter	Box of 12 pair
300-1090	P95 Particulate Filter	Pack of 3 pair
300-1080	P100 Filter	Box of 6 each
300-1085	P100 Pancake Filter	Box of 6 each
300-1717	Filter Retainer	1 Pair
300-3525	Service Kit	1 Kit

BreatheMate™

Full-face Dual Cartridge Respirator



Full-face Dual Cartridge Respirator

- Nose cup prevents lens from fogging
- Wide lens provides better visibility
- 5-point headstrap
- Polycarbonate lens with anti-fog and anti-scratch coating

NIOSH approved:
TC-84A-7451 OV/R95



Mask Combos:

Item No.	Size	Cartridge / Filter
312-1215	Small	Organic vapor / R95 particulate
312-2215	Medium	Organic vapor / R95 particulate
312-3215	Large	Organic vapor / R95 particulate

Mask Only:

Item No.	Size	Description
312-1017	Small	Full-face Mask with Filter Retainers
312-2017	Medium	Full-face Mask with Filter Retainers
312-3017	Large	Full-face Mask with Filter Retainers

Replacement Parts:

Item No.	Description	Quantity
300-1001	Organic Vapor Cartridge	Box of 6 each
300-1060	N95 Particulate Filter	Box of 12 pair
300-1070	R95 Particulate Filter	Box of 12 pair
300-1090	P95 Particulate Filter	Pack of 3 pair
300-1080	P100 Filter	Box of 6 each
300-1085	P100 Pancake Filter	Box of 6 each
300-1717	Filter Retainer	1 Pair
7600-95	Peel-off lens covers - clear	Pack of 25 each

BreatheMate™ Bundle

**SAFETY MADE EFFICIENT,
CONVENIENT & COST SAVING**



**HALF-MASK FACEPIECE
PARTICULATE FILTERS
ORGANIC VAPOR CARTRIDGES**

Bundle Includes:

- 1 Half-Mask Respirator with Filter Retainers
- 12 Pairs of N95 or R95 Particulate Filters
- 6 Organic Vapor Replacement Cartridges
- FREE Bonus Accessory Pack



Bundle

Item No.	Size	Cartridge / Filter
031-1115	Small	Organic vapor / N95 particulate
031-2115	Medium	Organic vapor / N95 particulate
031-3115	Large	Organic vapor / N95 particulate
031-1215	Small	Organic vapor / R95 particulate
031-2215	Medium	Organic vapor / R95 particulate
031-3215	Large	Organic vapor / R95 particulate



BANDIT™

Disposable Dual Cartridge Respirator



Disposable Dual Cartridge Respirator

- Pre-assembled respirator eliminates cartridge and filter attachment hassles
- Face piece construction is flexible, lightweight and form fitting to ensure a comfortable fit
- Low profile cartridges designed for better vision and balance
- Filters offer low breathing resistance
- Better comfort and fit for protection from airborne hazards

NIOSH approved:

TC-84A-5351 OV/N95

TC-84A-5412 OV/R95

Polybag:

Item No.	Size	Cartridge / Filter
8661-92	Medium	Organic vapor / N95 particulate
8661-93	Large	Organic vapor / N95 particulate

Replacement Parts:

Item No.	Description	Quantity
8661-22	Replacement N95 filters	Box of 5 pairs
8671-28	Replacement R95 filters	Box of 5 pairs

Clamshell:

Item No.	Size	Cartridge / Filter
8671-92	Medium	Organic vapor / R95 particulate
8671-93	Large	Organic vapor / R95 particulate

Replacement Cartridges & Filters

BreatheMate™



Organic Vapor Cartridges

Approved for use against organic vapor; time use restrictions may apply.

Item No.
300-1001 **Qty**
Box of 6 each



P100 Cartridges

99.97% filter efficiency level effective against all particulate aerosols.

Item No.
300-1080 **Qty**
Box of 6 each



Cartridge/Filter Combo Packs

Item No.	Description
300-1061	OV cartridge / N95 filters 1 set
300-1071	OV cartridge / R95 filters 1 set
300-1081	P100 cartridge 1 pair
300-1091	OV cartridge / P95 filter 1 set



N95 Particulate Filters

95% filter efficiency level effective against particulate aerosols free of oil; time use restrictions may apply.

Item No.
300-1060 **Qty**
Box of 12 pairs
300-1050 Box of 6 pairs



R95 Particulate Filters

95% filter efficiency level effective against all particulate aerosols; time use restrictions may apply.

Item No.
300-1070 **Qty**
Box of 12 pairs



P95 Particulate Filters

95% filter efficiency level effective against all particulate aerosols.

Item No.
300-1090 **Qty**
Pack of 3 pairs



P100 Pancake Filters

99.97% filter efficiency level effective against all particulate aerosols.

Item No.
300-1085 **Qty**
Box of 6 each

BANDIT™



N95 Particulate Filters

95% filter efficiency level effective against particulate aerosols free of oil; time use restrictions may apply.

Item No.
8661-22 **Qty**
Box of 5 pairs



R95 Particulate Filters

95% filter efficiency level effective against all particulate aerosols; time use restrictions may apply.

Item No.
8671-28 **Qty**
Box of 5 pairs

Disposable Particulate Respirators



Nuisance Dust Mask

- Adjustable metal nose piece shapes easily to face
- Single strap elastic head band
- Reduces the irritating effects from non-toxic particles such as pollen, common household dust and cut grass
- Does not provide NIOSH approved respiratory protection

Item No.	Qty
2985	Box of 50
2986	Pack of 5



N95 Particulate Respirator

- 95% filter efficiency level effective against particulate aerosols free of oil; time use restrictions may apply
- Maintenance-free construction
- Adjustable nose bridge with foam strip to reduce the potential for eyewear to fog
- Latex-free stapled fixed head strap

NIOSH approved:
TC-84A-3888

Item No.	Qty
8610	Box of 20
8610-50	Pack of 2



N95 Valved Particulate Respirator

- 95% filter efficiency level effective against particulate aerosols free of oil; time use restrictions may apply
- Maintenance-free construction
- Exhalation valve for easy breathing
- Adjustable nose bridge with foam strip to reduce the potential for eyewear to fog
- Latex-free stapled fixed head strap

NIOSH approved:
TC-84A-3889

Item No.	Qty
8611	Box of 10
8611-50	Pack of 1





N95 Particulate Respirator

- 95% filter efficiency level effective against particulate aerosols free of oil; time use restrictions may apply
- Maintenance-free construction
- Soft seal cushion nose foam provides exceptional comfort
- Latex-free stapled fixed head strap

NIOSH approved:
TC-84A-3170

Item No.	Qty
8710	Box of 20



N95 Valved Particulate Respirator

- 95% filter efficiency level effective against particulate aerosols free of oil; time use restrictions may apply
- Exhalation valve for easy breathing
- Maintenance-free construction
- Soft seal cushion nose foam provides exceptional comfort
- Latex-free stapled fixed head strap

NIOSH approved:
TC-84A-3171

Item No.	Qty
8711	Box of 10



N95 Valved Active Carbon Respirator

- 95% filter efficiency level effective against particulate aerosols free of oil; time use restrictions may apply
- Covered with active carbon pre-filter against nuisance organic vapors below PEL (Permissible Exposure Limit)
- Exhalation valve for easy breathing
- Soft seal cushion nose foam provides exceptional comfort
- Latex-free stapled fixed head strap

NIOSH approved:
TC-84A-3171

Item No.	Qty
8712	Box of 10
8712-50	Pack of 1





R95 Particulate Respirator

- 95% filter efficiency level effective against all particulate aerosols; time use restrictions may apply-
- Lightweight construction for greater comfort
- Maintenance-free construction
- Adjustable nose bridge with foam strip to reduce the potential for eyewear to fog
- Latex-free stapled fixed head strap

NIOSH approved:
TC-84A-4050

Item No.	Qty
8620	Box of 20



R95 Valved Particulate Respirator

- 95% filter efficiency level effective against all particulate aerosols; time use restrictions may apply
- Exhalation valve for easy breathing
- Lightweight construction for greater comfort
- Maintenance-free construction
- Adjustable nose bridge with foam strip to reduce the potential for eyewear to fog
- Latex-free stapled fixed head strap

NIOSH approved:
TC-84A-4321

Item No.	Qty
8621	Box of 10



P100 Valved Particulate Respirator

- 99.97% filter efficiency level effective against all particulate aerosols
- Soft foam face cushion eliminates pressure points for added comfort and fit
- Exhalation valve for easy breathing
- Latex-free adjustable straps

NIOSH approved:
TC-84A-4010

Item No.	Qty
8641	Box of 2

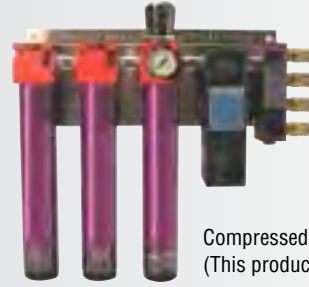


Supplied-Air Systems & Respirators

These supplied-air respirators are compatible with a low pressure ambient air pump or compressed air filtration systems.



Or



Compressed Air Filtration Systems
(This product is not sold by SAS)

Item No.
9810-00

Description
3/4 HP one man oil-less air pump



Gen-Nex™ Supplied-Air Hood

- Hood made from Gen-Nex™ material
- Adjustable suspension system for precise fit and position
- Bib can be tucked into coveralls to cool upper body
- Lightweight downtube

NIOSH approved:
TC-19C-424

Item No.
9816-00

Description
Gen-Nex™ supplied-air hood



Flip-Vue™ Supplied-Air Visor

- Works with a low pressure ambient air pump or compressed air filtration systems
- Precision ratcheting headpiece adjusts for a comfortable fit
- Lens meets ANSI Z87 standard for impact resistance
- Beard guard helps maintain positive pressure
- Quiet-Kool technology for efficient use

NIOSH approved:
TC-19C-466

Item No.
9650-00

Description
Flip-Vue™ supplied-air visor



Opti-Fit™ Supplied-Air Full-face Respirator

- Silicone skirt offers exceptional durability and comfort
- Nose cup prevents fogging
- Viewing area offers distortion free visibility and optical clarity
- 5-point headstrap
- Replaceable, polycarbonate lens treated with anti-scratch coating
- Lightweight downtube

NIOSH approved:
TC-19C-269

Item No.
9814-04
9814-05
9814-06

Size
Small
Medium
Large





Low Maintenance Supplied-Air Half-Mask

- Universal nose fit
- Advanced yoke design for a secure no-slip fit
- Lightweight downtube

NIOSH approved:
TC-19C-292

Item No.	Size
9813-70	Medium
9813-71	Large



Professional Supplied-Air Half-Mask

- Large sealing surface
- Overspray goggles with peel-off lens cover
- Heavy-duty rubber downtube

NIOSH approved:
TC-19C-425

Item No.	Size
9810-02	Medium
9813-20	Large



One-Man Flip-Vue™ Visor Supplied-Air System

Item No.
9800-19

System Contents:

Item No.	Description	Qty
9810-00	3/4-HP oil-less air pump	1
9852-42	50' lightweight breathing airline	1
9650-00	Flip-Vue™ supplied-air visor	1
9700-58	Booth kit (5' section of air hose for quick spray booth installation)	1



One-Man Opti-Fit™ Full-face Supplied-Air System

Item No.
9800-35

System Contents:

Item No.	Description	Qty
9805-00	1/4-HP oil-less air pump	1
9852-42	50' lightweight breathing airline	1
9814-05	Full-face Opti-Fit™ supplied-air respirator with belt	1





One-Man Gen-Nex™ Hood Supplied-Air System

Item No.
9800-18



System Contents:

Item No.	Description	Qty
9810-00	3/4-HP oil-less air pump	1
9852-42	50' lightweight breathing airline	1
9816-00	Gen-Nex™ supplied-air hood with belt	1
9700-58	Booth kit (5' section of air hose for quick spray booth installation)	1



One-Man Half-Mask Supplied-Air System

Item No.
9800-32



System Contents:

Item No.	Description	Qty
9805-00	1/4-HP oil-less air pump	1
9852-42	50' lightweight breathing airline	1
9810-02	Half-mask supplied-air respirator and overspray goggles	1
9700-56	Booth kit (5' section of air hose for quick spray booth installation)	1



Two-Man Opti-Fit™ Full-face Supplied-Air System

Item No.
9800-25



System Contents:

Item No.	Description	Qty
9820-00	3/4-HP oil-less air pump (2 man)	1
9852-42	50' lightweight breathing airline	2
9814-05	Full-face Opti-Fit™ supplied-air respirator with belt	2



Two-Man Half-Mask Supplied-Air System

Item No.
9800-22

System Contents:

Item No.	Description	Qty
9820-00	3/4-HP oil-less air pump (2 man)	1
9852-42	50' lightweight breathing air line	2
9810-02	Half-mask supplied-air respirator and overspray goggles	2
9700-58	Booth kit (5' section of air hose for quick spray booth installation)	2



One-Man Low Maintenance Full-face Supplied-Air System

Item No.
3800-30

System Contents:

Item No.	Description	Qty
9806-00	1/4-HP oil-less air pump	1
9852-32	50' lightweight breathing airline w/flow-thru coupler	1
9814-05	Full-face Opti-Fit™ supplied-air respirator with belt	1



One-Man Low Maintenance Half-Mask Supplied-Air System

Item No.
3800-32

System Contents:

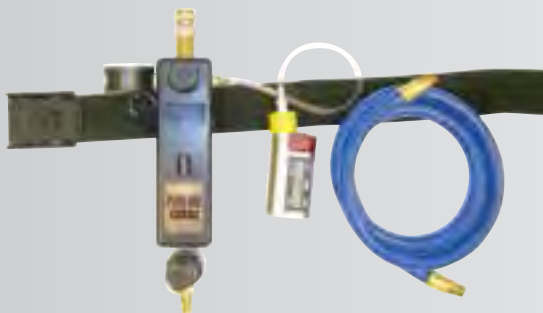
Item No.	Description	Qty
9806-00	1/4-HP oil-less air pump	1
9852-32	50' lightweight breathing airline w/flow-thru coupler	1
9813-70	Half-mask supplied-air respirator with belt and storage bag	1





Warning: The Pure-Air 2000 Systems on this page are not for use in (IDLH), Immediately Dangerous to Life or Health Atmospheres or with gasoline/kerosene powered compressors. Do Not operate at levels above 125 PSI. SAS Safety Corp. recommends using a high quality oil and water separator prior to installation of Pure-Air 2000.

*** With proper use, Pure-Air 2000 Systems meet OSHA 29CFR 1910.134 requirements for constant flow supplied-air.**



Replacement Filter

Item No.	Description
2001-50	Replacement filter



Pure-Air 2000™ Carbon Monoxide Monitor

Item No.	Description
2001-95	Battery operated CO monitor
2001-20	Barbed orifice*

* Barbed orifice not included with CO monitor

Pure-Air 2000™ Systems

The Pure-Air 2000™ breathing air system is a breakthrough in respiratory protection! This extraordinary system uses just one airline to supply the user with clean, filtered, Grade “D” breathing air from electric powered shop air compressors.



- Maintains pressure for use of spray equipment, sanders and all types of air tools
- Uses just one air line
- Meets OSHA 29CFR 1910.134 requirements for providing Grade “D” air*

Pure-Air 2000™ with Opti-Fit™ Respirator

Without CO Monitor

Item No.	Description
2001-04	Medium Opti-Fit™ Resp.
2001-06	Large Opti-Fit™ Resp.

With CO Monitor

Item No.	Description
2001-05	Medium Opti-Fit™ Resp.
2001-07	Large Opti-Fit™ Resp.

Pure-Air 2000™ Unit with CO Monitor

Item No.	2001-00
----------	---------

System Contents:

Item No.	Description
2001-02	Pure-Air filtration unit
2001-95	Battery operated CO monitor
3626	6' work line hose
9850-31	Nylon web belt



Pure-Air 2000™ Unit

Item No.	2001-01
----------	---------

System Contents:

Item No.	Description
2001-02	Pure-Air filtration unit
3626	6' work line hose
9850-31	Nylon web belt





1/4-HP One-Man Oil-Less Air Pump

Item No.

9805-00

9806-00 (not shown) - comes with flow thru coupler and no pressure relief valve.



HP	Max No. of Respirators	Max No. of Hoods/Visors	Amps/Volts	Lbs.	PSI	CFM
1/4	1	0	9A / 115V	32	0 to 10	0 to 4.5



3/4-HP One-Man Oil-Less Air Pump

Item No.

9810-00



HP	Max No. of Respirators	Max No. of Hoods/Visors	Amps/Volts	Lbs.	PSI	CFM
3/4	2	1	10.8A / 115V	56	0 to 10	0 to 8



3/4-HP Two-Man Oil-Less Air Pump

Item No.

9820-00



HP	Max No. of Respirators	Max No. of Hoods/Visors	Amps/Volts	Lbs.	PSI	CFM
3/4	2	1	10.8A / 115/230V	56	0 to 10	0 to 10



Breathing Airline Hose

Item No.

9852-32

Description

50' airline hose w/ flow-thru coupler

9852-40

6' airline hose

9852-41

25' airline hose

9852-42

50' airline hose

9852-44

100' airline hose



Air Intake Extension

Use when necessary to extend pump air intake to ensure clean air to user. Extend intake up to 200 feet.

Item No.

9700-25

Description

25' inlet hose kit (1st section only)

9700-30

25' inlet hose extension

9840-25

25' inlet hose kit (1st section only, 1 1/2-HP)

9840-30

25' inlet hose extension (1 1/2-HP)

Filter not included with kit

Recommended Replacement Parts & Accessories



Breathemate Service Kit

- 1 each chin strap loop, chin strap hook, yoke, head strap, exhalation valve cap, exhalation valve support, exhalation valve, 2 each inhalation valve support, inhalation valve

Item No.
300-3525

Description
Service Kit



Bitrex™ Fit Test Kit

- Qualitative fit test kit (Includes: 1 test hood, 1 box sensitivity solution, 1 box bitrex test solution and 2 nebulizers)
- Bitrex produces a bitter taste for detection of leaks

Item No.
9401-01
9401-03
9401-04
9401-05

Description
Test kit
Sensitivity solution refill
Bitrex solution refill
Nebulizer with labels

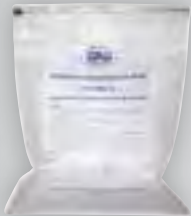


Breathemate™ Filter Retainers

- For use with all Breathemate™ half mask and full face respirators

Item No.
300-1717

Description
1 pair



Storage Bag

- Airtight to protect your respirator from shop contaminants and humidity
- Size: 15" x 11.81"

Item No.
9401-18

Description
Respirator storage bag



Mask Cleaning Wipes (Non-Alcohol)

Use mask cleaning wipes routinely for respirator maintenance.

- Wipe size: 5" x 8"
- Individually packaged
- Active ingredient: Benzalkonium Chloride

Item No.
1400-96
1400-97

Description
Dispenser box of 100
Economy box of 30





Peel-Off Lens Covers

Lens covers protect against paint and chemical overspray.

Item No.	Color	Use With	Qty	Item No.	Color	Use With	Qty
9650-25	Clear	Flip-Vue™ visor	25	7600-95	Clear	Full face mask	25
5106-10	Clear	Deluxe overspray goggles	10	7600-96	Gray	Full face mask	25
5111	Clear	Overspray goggles	10			(Not for welding)	25
9818-20	Clear	Gen-Nex™ hood	10	1400-95	Clear	Full face mask (blue/gray)	25



Air Intake / Air Exhaust Filters

- High quality
- Designed to keep dust and airborne particles from damaging pump
- Replace filters every 90 -100 running hours

Item No.	Description	Qty.
9700-14	Intake 1/4 and 1/3-HP (A)	Pack of 6 pr.
9700-01	Intake 1/2 and 3/4-HP and 1 1/2-HP (B)	Pack of 6 ea.
9700-02	Exhaust filter (C)	Pack of 6 ea.
9806-02	Exhaust filter (For 9806-00 pump) (D)	Pack of 1 ea.

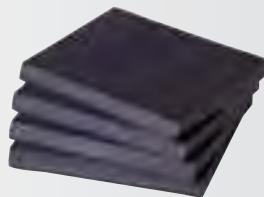


Pump Service Kits

Service kits include:

- 1 intake filter
- 1 exhaust filter
- 1 set carbon vanes (4)

Item No.	Description
9700-40	1/4 and 1/3-HP oil-less pump
9700-49	1/2 and 3/4-HP (models 0822/1022)
9700-50	1/2 and 3/4-HP (models 0823/1023)



Carbon Vanes

Item No.	Description	Qty
9700-52	1/2-HP and 3/4-HP (models 0822/1022)	Pack of 4 each
9700-53	1/4-HP and 1/3-HP (models 0522/0523)	Pack of 4 each
9700-54	1/2-HP and 3/4-HP (models 0823/1023)	Pack of 4 each

Pump Couplers and Plugs

Item No.	Description
9700-10	Coupler 1/4" NPT
9813-21	Plug, threaded 1/4" NPT
9806-10	Coupler 1/4" NPT - flow thru (not shown)



WHAT IS A RESPIRATOR?

A respirator is a device that protects you from inhaling dangerous substances, such as chemicals and infectious particles. Respirators are among the most important pieces of protective equipment for working in hazardous environments. Selecting the right respirator requires an assessment of all the workplace operations, processes or environments that may create a respiratory hazard. The identity of the hazard and its airborne concentrations need to be determined before choosing a respirator. This assessment should be done by experienced safety personnel or by an industrial hygienist. There are several different types of respirators, as described below.

THE DIFFERENT TYPES OF RESPIRATORS

Respirators work by either filtering particles from the air, chemically cleaning (purifying) the air and/or supplying clean air from an outside source.

Particulate Respirators: Particulate respirators are the simplest, least expensive, and least protective of the respirator types available. These respirators only protect against particles (e.g., dust). They do not protect against chemicals, gases, or vapors, and are intended only for low hazard levels. The commonly known “N-95” filtering facepiece respirator or “dust mask” is one type of particulate respirator, often used in hospitals to protect against infectious agents. Particulate respirators are “air purifying respirators” because they clean particles out of the air as you breathe.

Particulate respirators:

- Filter out dusts, fumes and mists.
- Usually disposable dust masks or respirators with disposable filters.
- Must be replaced when they become discolored, damaged, or clogged.
- Examples: filtering facepiece or elastomeric respirator.

Air-Purifying Respirator (APR): Gas masks are also known as “air-purifying respirators” because they filter or clean chemical gases out of the air as you breathe. This respirator includes a facepiece or mask and a cartridge or canister. Straps secure the facepiece to the head. The cartridge may also have a pre-filter to remove particulates.

Gas masks are effective only if used with the correct cartridge or filter for a particular biological or chemical substance. Selecting the proper filter can be a complicated process. There are cartridges available that protect against more than one hazard, but there is no “all-in-one” cartridge that protects against all substances. It is important to know what hazards you will face in order to be certain you are choosing the right filters/cartridges.

Chemical Cartridge/Gas Mask respirator:

- Uses replaceable chemical cartridges or canisters to remove the contaminant.
- Are color-coded to help you select the right one.
- May require more than one cartridge to protect against multiple hazards.

Powered Air-Purifying Respirator (PAPR): Powered air-purifying respirators use a fan to draw air through the filter to the user. They are easier to breathe through; however, they need a fully charged battery to work properly. They use the same type of filters/cartridges as other air-purifying respirators. It is important to know what the hazard is and concentrations, in order to select the proper filters/cartridges.

Supplied-Air Respirator (SAR) Systems: Utilizes air from an external air source that is independent of the hazardous environment. SAR's are great if you want to benefit from the extra comfort of higher, adjustable airflows or have an extreme temperature application where a personal air-cooler or heater vastly improves your wearer's comfort.

All of these respirators (except for the “dust masks” or filtering face pieces) are available in either half mask, full face, hood, or visor configuration.

ARE THERE CAUTIONS FOR RESPIRATORS?

Yes. Types of respirators come in several varieties, each with its own set of cautions, limitations and restrictions of use. Tight fitting respirators require fit testing to ensure an adequate fit to the face and cannot be used with facial hair. Certain escape respirators use a nose clip and mouthpiece that clenches between teeth, similar to a snorkel. Some respirators prevent the user from talking while others have speaking diaphragms or electronic devices. All contaminated respirators in contact with hazardous chemicals require cleaning, decontamination or proper disposing.

In order for proper use, all respirators require training. Practicing with personal respirators is often available. Some escape respirators come in packages that must remain sealed until use so training occurs on special “practice” respirators. Important training for respirators includes proper storage, maintenance, use and disposal. The supplier of the respirator (i.e., seller, distributor or manufacturer) provides this information. Improper use of a respirator may result in inadequate protection and may even harm the user.

For specific respiratory cautions and limitations, refer to your Respirator's User Manual.

Excerpts provided by OSHA's Bulletin “General Respiratory Protection Guidance for Employers and Workers”

The information in this bulletin will provide basic information to workers and employers who may find themselves using respiratory protection for the first time. The guidance provides information on what respirators are, how they work, and what is needed for a respirator to provide protection.



SAFETY DOESN'T HAPPEN BY ACCIDENT

Complete head-to-toe protection for
the Professional and DIY painter.

When Protection Counts™

Hi-Viz Protection



Be **INVUE™** and improve your visibility on the job, highways or recreational areas. The **INVUE™** product category features a vast collection of High-Visibility safety clothing of different ANSI Class levels and fluorescent styles. From safety vests, flame resistant wear, t-shirts and hoodies to jackets, parkas, hats and rain gear.



Front

Back

Class 2 Flame Retardant Vest

- Flame retardant treated fabric
- 100% polyester mesh
- 2" wide reflective tape
- Front molded plastic zipper closure matches vest color
- **Pockets:** 1 inner
- ANSI/ISEA 107 Class 2 compliant

Test Method: Standard test method for flame resistance of textiles (vertical test)

Yellow Item No.	Orange Item No.
690-1108	692-1108
690-1109	692-1109
690-1110	692-1110
690-1111	692-1111
690-1112	692-1112
690-1113	692-1113
690-1114	692-1114

Size
Medium
Large
X-Large
2X-Large
3X-Large
4X-Large
5X-Large



Front

Back

Class 2 Flame Retardant 2-Tone Vest

- Flame retardant treated fabric
- 100% polyester mesh
- 2" wide reflective tape with two-tone contrast trim
- Front molded plastic zipper closure matches vest color
- **Pockets:** 2 front chest, 2 hip and 2 inner
- ANSI/ISEA 107 Class 2 compliant

Test Method: Standard test method for flame resistance of textiles (vertical test)

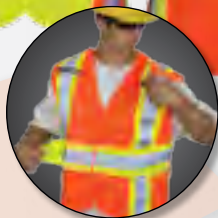
Yellow Item No.	Orange Item No.
690-2108	692-2108
690-2109	692-2109
690-2110	692-2110
690-2111	692-2111
690-2112	692-2112
690-2113	692-2113
690-2114	692-2114

Size
Medium
Large
X-Large
2X-Large
3X-Large
4X-Large
5X-Large



Front

Back



Class 2 Flame Retardant Breakaway Vest

- 5 Point breakaway vest
- Flame retardant treated fabric
- 100% polyester mesh
- 2" wide reflective tape with two-tone contrast trim
- Hook-and-loop closure
- **Pocket:** Inside left chest pocket
- 2 radio mic tabs
- ANSI/ISEA 107 Class 2 compliant

Test Method: Standard test method for flame resistance of textiles (vertical test)

Yellow Item No.	Orange Item No.
690-1708	692-1708
690-1709	692-1709
690-1710	692-1710

Size
S/M
L/XL
2XL/3XL



Class 2 Safety Vest

- 100% polyester mesh
- 2" wide reflective tape
- Hook-and-loop closure
- ANSI/ISEA 107 Class 2 compliant

Yellow Item No.	Orange Item No.	Size
690-1208	692-1208	Medium
690-1209	692-1209	Large
690-1210	692-1210	X-Large
690-1211	692-1211	2X-Large
690-1212	692-1212	3X-Large
N/A	692-1213	4X-Large



Class 2 Surveyor's Vest

- 100% polyester mesh
- 2" wide reflective tape
- Front zipper closure
- **Pockets:** 2 lower with press-studs, 1 outer right chest for pen compartments
- ANSI/ISEA 107 Class 2 compliant

Yellow Item No.	Orange Item No.	Size
690-2208	692-2208	Medium
690-2209	692-2209	Large
690-2210	692-2210	X-Large
690-2211	692-2211	2X-Large
690-2212	692-2212	3X-Large
N/A	692-2213	4X-Large



Class 3 Mesh Safety Vest

- 100% polyester, 110g mesh fabric
- 2" wide reflective tape with two-tone contrast trim
- Front molded plastic zipper closure matches vest color
- **Pocket:** 1 inside right pocket, 1 outside left chest pocket
- ANSI/ISEA Class 3 compliant

Yellow Item No.	Orange Item No.	Size
690-2218	692-2218	Medium
690-2219	692-2219	Large
690-2220	692-2220	X-Large
690-2221	692-2221	2X-Large
690-2222	692-2222	3X-Large
690-2223	692-2223	4X-Large
690-2224	692-2224	5X-Large



Class 3 Safety Jacket

- 100% polyester mesh
- 2" wide reflective tape
- Hook-and-loop closure
- ANSI/ISEA 107 Class 3 compliant

Item No.	Size
690-1308	Medium
690-1309	Large
690-1310	X-Large
690-1311	2X-Large
690-1312	3X-Large



Basic Safety Vest

- 100% polyester mesh
- 1" vertical reflective tape
- Elastic side straps
- Hook-and-loop closure
- Non-ANSI

Item No.	Size
6823	One-size-fits-most

ANSI (American National Standards Institute) and ISEA (International Safety Equipment Association) developed high-visibility clothing standards for safety apparel. These standards were designed to protect workers on job sites and recreational areas where high visibility is required. ANSI/ISEA 107-2010 specifies the types, classes and colors of high-visibility clothing required by those exposed to traffic hazards.

Which class do you need?

Class 2: Workers who work near roadways where traffic exceeds 25 mph and workers who need greater visibility in inclement weather; generally includes school crossing guards, parking and toll gate personnel, airport ground crews and law enforcement personnel directing traffic.

Class 3: Workers with high task loads in a wide range of weather conditions where traffic exceeds 50 mph. The standard recommends these garments for all roadway construction personnel, vehicle operators, utility workers, survey crews, emergency responders, railway workers and accident site investigators.

Class E: When high-visibility pants are worn without other high-visibility garments, they are considered Class E. When pants are added to Class 2 or 3 garments, the ensemble is considered Class 3.



Front

Back

Class 2 Black Bottom T-Shirt

- 100% polyester, 130g birdseye fabric
- Front two-tone shirt with black bottom
- 2" reflective tape
- Full fluorescent back
- Black-bottom front to maintain a clean look
- **Pocket:** Left chest pocket
- ANSI/ISEA Class 2 compliant

Yellow Item No.	Orange Item No.	Size
690-1658	692-1658	Medium
690-1659	692-1659	Large
690-1660	692-1660	X-Large
690-1661	692-1661	2X-Large
690-1662	692-1662	3X-Large
690-1663	692-1663	4X-Large
690-1664	692-1664	5X-Large



Front

Back

Class 2 Long Sleeve T-Shirt

- 100% polyester, 130g birdseye fabric
- 2" wide reflective tape with two-tone contrast trim
- **Pocket:** Left chest pocket
- ANSI/ISEA 107 Class 2 compliant

Yellow Item No.	Orange Item No.	Size
690-1608	692-1608	Medium
690-1609	692-1609	Large
690-1610	692-1610	X-Large
690-1611	692-1611	2X-Large



Front

Back

Class 2 Hooded Sweatshirt

- Fleece lined polyester
- 2" wide reflective tape with two-tone contrast trim
- Front molded plastic zipper closure matches vest color
- Detachable drawstring hood
- **Pocket:** Front pouch
- ANSI/ISEA 107 Class 2 compliant

Yellow Item No.	Orange Item No.	Size
690-1408	692-1408	Medium
690-1409	692-1409	Large
690-1410	692-1410	X-Large
690-1411	692-1411	2X-Large
690-1412	692-1412	3X-Large
690-1413	692-1413	4X-Large
690-1414	692-1414	5X-Large



Front

Back

Class 3 Hooded Bomber Jacket

- 100% polyester 300 Denier Oxford PU coated waterproof material
- 2" wide reflective tape
- Taffeta lining 190T
- Fleece lined collar
- Detachable tuck-away hood
- **Pockets:** right chest with zipper, left upper chest, 2 zipper slash on side, 2 pen pockets on sleeve
- ANSI/ISEA 107 Class 3 compliant

Yellow Item No.	Orange Item No.	Size
690-1508	692-1508	Medium
690-1509	692-1509	Large
690-1510	692-1510	X-Large
690-1511	692-1511	2X-Large
690-1512	692-1512	3X-Large
690-1513	692-1513	4X-Large
690-1514	692-1514	5X-Large



Front

Back

Class 2 Rain Jacket

- 100% polyester 300 Denier Oxford PU coated waterproof material
- 100% polyester mesh lining
- 2" wide reflective tape with two-tone contrast trim
- Black bottom, to maintain a clean look
- 2 way zipper with snap closure storm flap
- Detachable tuck-away hood
- **Pockets:** 2 bottom pockets with flaps
- ANSI/ISEA Class 2 compliant

Yellow Item No.	Size
690-1518	Medium
690-1519	Large
690-1520	X-Large
690-1521	2X-Large
690-1522	3X-Large
690-1523	4X-Large
690-1524	5X-Large



Front

Back

Class E Rain Pants

- 100% polyester 300 Denier Oxford PU coated waterproof material
- 2" wide reflective tape with two-tone contrast trim
- Black-bottom to maintain a clean look
- Elastic band around waist
- **Pockets:** 2 side slits for accessibility, 1 back pocket
- ANSI/ISEA Class E compliant

Yellow Item No.	Size
690-1908	Medium
690-1909	Large
690-1910	X-Large
690-1911	2X-Large
690-1912	3X-Large
690-1913	4X-Large
690-1914	5X-Large



Front

Back

Class 3 Parka Jacket

- 100% polyester 300 Denier Oxford PU coated waterproof material
- 2" wide reflective tape
- Taffeta lining 190T
- Detachable tuck-away hood
- Full length zipper with storm flap
- **Pockets:** 2 lower front, 1 interior pocket
- ANSI/ISEA 107 Class 3 compliant

Yellow Item No.	Size
690-2308	Medium
690-2309	Large
690-2310	X-Large
690-2311	2X-Large





 **INVUE™**

Class 2, 6-in-1 Bomber Jacket

Full Bomber Jacket

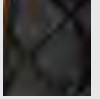


6 ways to wear:

Inner Jacket



Quilted lining



Inner Jacket as Vest



Outer Bomber Jacket



Outer Bomber Jacket
(with or without Inner Vest)



Outer Jacket:

- 100% polyester 300 Denier Oxford PU coated waterproof material
- 2" wide reflective tape with two-tone contrast trim
- Inside mesh lining
- Taped seams, studded storm flap, detachable tuck-away hood
- 2 radio mic tabs
- **Pockets:** 1 cell phone chest, 2 outside, 1 inside chest
- ANSI/ISEA 107 Class 2 compliant

Item No.

692-2408
692-2409
692-2410
692-2411
692-2412

Size

Medium
Large
X-Large
2X-Large
3X-Large

Inner Jacket:

- 100% polyester 300 Denier Oxford PU coated waterproof material
- 2" wide reflective tape with two-tone contrast trim
- 100% polyester 190T quilted lining
- Zipper detachable sleeves to make insulated vest
- **Pockets:** 2 outside, 1 inside chest
- ANSI/ISEA 107 Class 2 compliant

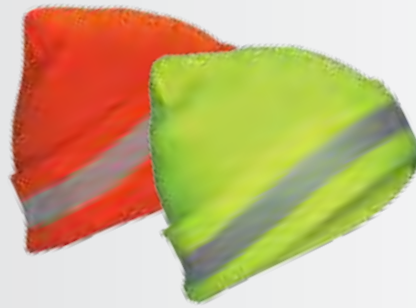




Ranger Hat

- 100% polyester, mesh and tricot fabric
- 1" wide reflective tape with two-tone contrast trim
- Mesh around crown for cooling and ventilation
- Drawstring for secure fit
- ANSI/ISEA 107 compliant

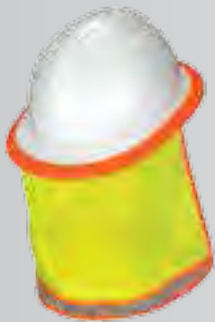
Yellow Item No.	Orange Item No.	Size
690-1714	692-1714	One-size-fits-most



Knit Beanie

- 100% Knit polyester
- Fold over style
- Reflective knit stripe
- ANSI/ISEA 107 compliant

Yellow Item No.	Orange Item No.	Size
690-1711	692-1711	One-size-fits-most



Neck Shade

- 100% polyester, 100g mesh fabric
- High visibility fabric with 1" reflective tape with contrasting fabric
- Protects your neck from sun exposure
- Elastic band fits over most hard hats

Yellow Item No.	Orange Item No.	Size
690-1715	692-1715	One-size-fits-most



Warning Flag

- Fluorescent orange for high visibility
- Made of reinforced nylon measuring 18" x 18"
- 24" wooden dowel for easy handling

Item No.
9960



Reflective Gloves

- High visibility stretch Spandex material back of hand
- Reflective strip for additional visibility
- Synthetic leather palm with silicone strips on fingertips
- Hook-and-loop wrist closure

Item No.	Size
6362	Medium
6363	Large
6364	X Large
6365	2X Large

Safety Cones

- 100% PVC injection molded cone
- Bright fluorescent red-orange with UV inhibitor
- Cleated base allows firm grip to the road
- Superior flexibility in any kind of adverse weather condition
- Reflective bars provide wide angle reflectivity

Item No.	Description
7500-12	12" sport cone
7500-18	18" cone
7501-18	18" cone with reflective bars
7500-28	28" cone
7501-28	28" cone with reflective bars





SAFETY BOOTS AND SHOES BUILT BULLDOG TOUGH

Available Now at **SAS Safety Corp.**



MACK
BOOTS

Eye Protection



VX9™



- High-impact polycarbonate lens
- 99.9% UV protection
- Anti-fog coating on lens
- Scratch resistant coating
- Sporty wrap-around frame design
- Non-slip nose piece and temples
- Meets ANSI Z87.1 – 2015

Poly Bag Item No.	Clamshell Item No.	Lens Color
5510-01	5510-11	Clear
5510-02	5510-12	Gray
5510-03	N/A	Yellow
5510-04	N/A	Mirror



Gray



Mirror



Yellow



Clear

DRY FOREST CAMO EYEWEAR



- High-impact polycarbonate lens
- 99.9% UV protection
- Anti-fog coating on lens
- Scratch resistant coating
- Full frame with wide temple arms
- EVA foam padding for nose pieces, brow guard, and around the lenses
- Meets ANSI Z87.1 – 2015

Poly Bag Item No.	Lens Color
5550-01	Clear
5550-02	Gray
5550-03	Yellow



Gray



Clear



Yellow

SPECTRO™



- High-impact polycarbonate lens
- 99.9% UV protection
- Anti-fog coating on lens
- Scratch resistant coating
- Sporty wrap-around frame design
- Non-slip adjustable rubber nose piece
- Meets ANSI Z87.1 – 2015

Poly Bag

Item No.	Lens Color
5511-01	Clear
5511-02	Gray
5511-03	Yellow
5511-04	Mirror



Clear



Gray



Mirror



Yellow

VULCAN



- High-impact polycarbonate lens
- 99.9% UV protection
- Anti-fog coating on lens
- Scratch resistant coating
- Foam padded brow guard
- Detachable / adjustable elastic fabric strap
- Non-slip rubber nose piece
- Meets ANSI Z87.1 – 2015

Poly Bag

Item No.	Lens Color
5512-01	Clear
5512-02	Gray
5512-03	Yellow
5512-04	Mirror



Gray



Mirror



Yellow



Clear

NSX Turbo™



Gray



- High-impact polycarbonate lens
- 99.9% UV protection
- Single lens design
- Scratch resistant coating
- Lightweight wrap-around lens
- Non-slip temples
- Meets ANSI Z87.1 – 2015

Poly Bag Item No.
 5330
 5331
 5332
 5333
 5334

Lens Color
 Clear
 Gray
 Yellow
 Light Blue
 Indoor/Outdoor Mirror

Poly Bag Item No.
 5330-01
 5331-01

Anti-Fog Lens Color
 Clear
 Gray

Clear



Yellow



Light Blue



In/Outdoor





Gold Mirror

Gray



In/Outdoor



Clear



Yellow



Orange



- High-impact polycarbonate lens
- 99.9% UV protection
- Anti-fog coating on lens
- Scratch resistant coating
- Single lens design
- Lightweight wrap-around lens
- Meets **ANSI Z87.1 – 2015**

**Poly Bag
Item No.**
5340
5341
5342
5343
5344
5345

**Clamshell
Item No.**
5340-50
5341-50
5342-50
5343-50
5344-50
5345-50

Lens Color
Clear
Yellow
Orange
Gray
Gold Mirror
Indoor/
Outdoor Mirror



Shade 5

- Torch brazing
- Light gas welding
- Soldering
- Light to medium cutting
- Meets **ANSI Z87.1 – 2015**

Lens Color
Shade 5

**Poly Bag
Item No.**
5346



NSX Clear

- High-impact lens
- No lens coatings
- Meets **ANSI Z87.1 – 2015**

Lens Color
Clear

**Bulk
Item No.**
5347-00



DB2



Iridium



- High-impact polycarbonate lens
- 99.9% UV protection
- Anti-fog coating on lens
- Scratch resistant coating
- Non-slip nose piece and temples
- Foam brow guard
- Meets ANSI Z87.1 – 2015

Red Frame

Poly Bag Item No.	Clamshell Item No.	Lens Color
540-0400	540-0410	Clear
540-0401	540-0411	Gray
540-0402	540-0412	Indoor/Outdoor
540-0403	540-0413	Mirror

Silver Frame

Poly Bag Item No.	Clamshell Item No.	Lens Color
540-0500	540-0510	Clear
540-0501	540-0511	Gray
540-0502	540-0512	Indoor/Outdoor
540-0503	540-0513	Mirror
540-0509	540-0519	Ice Blue*

Black Frame

Poly Bag Item No.	Clamshell Item No.
540-0600	540-0610
540-0601	540-0611
540-0602	540-0612
540-0603	540-0613
540-0605	540-0615

Blue Frame

Poly Bag Item No.	Clamshell Item No.	Lens Color
540-0700	540-0710	Clear
540-0701	540-0711	Gray
540-0702	540-0712	Indoor/Outdoor
540-0703	540-0713	Mirror

Charcoal Frame

Poly Bag Item No.	Clamshell Item No.	Lens Color
540-0809	540-0819	Purple Haze*

Gold Frame

Poly Bag Item No.	Clamshell Item No.	Lens Color
540-0909	540-0919	Iridium*



*Anti-fog unavailable on iridium, ice blue and purple haze lenses



DIAMONDBACKS™



Clear



- High-impact polycarbonate lens
- 99.9% UV protection
- Anti-fog coating on lens
- Scratch resistant coating
- Non-slip nose piece
- Wrap-around design hugs the face
- Non-slip temples
- Meets ANSI Z87.1 – 2015

Red Frame

Poly Bag Item No.	Clamshell Item No.	Lens Color
540-0000	540-0010	Clear
540-0001	540-0011	Gray
540-0003	540-0013	Smoke Mirror

Black Frame

Poly Bag Item No.	Clamshell Item No.	Lens Color
540-0200	540-0210	Clear
540-0201	540-0211	Gray
540-0202	N/A	Indoor/outdoor
540-0203	540-0213	Smoke Mirror
540-0205	540-0215	Yellow

Gray Frame

Poly Bag Item No.	Clamshell Item No.	Lens Color
540-0100	540-0110	Clear
540-0101	540-0111	Gray
540-0103	540-0113	Smoke Mirror

Blue Frame

Poly Bag Item No.	Clamshell Item No.	Lens Color
540-0300	540-0310	Clear
540-0301	540-0311	Gray
540-0303	540-0313	Smoke Mirror

Smoke Mirror



Gray



Yellow



In/Outdoor



SIDEWINDERS™



- High-impact polycarbonate lens
- 99.9% UV protection
- Anti-fog coating on lens
- Scratch resistant coating
- Ribbed non-slip nose cushion
- Ratchet inclination
- Adjustable temples for excellent fit
- Meets **ANSI Z87.1 – 2015**



Poly Bag Item No.	Clamshell Item No.	Lens Color	Poly Bag Item No.	Clamshell Item No.	Lens Color
541-0000	541-0010	Clear	541-0004	541-0014	Gold Mirror
541-0001	541-0011	Gray	541-0005	541-0015	Blue Mirror
541-0002	541-0012	Yellow	541-0006	541-0016	Indoor/Outdoor Mirror
541-0003	541-0013	Silver Mirror			

SIDEWINDER™ READERS



- Available in 5 magnification strengths
- High-impact polycarbonate lens
- 99.9% UV protection
- Anti-fog coating on lens
- Scratch resistant lens coating
- Non-slip nose piece and temples
- Ratchet inclination
- Meets **ANSI Z87.1 – 2015**



Poly Bag Item No.	Clamshell Item No.	Diopter Strength	Poly Bag Item No.	Clamshell Item No.	Diopter Strength
541-1000	N/A	1.0x	541-2500	541-2510	2.5x
541-1500	541-1510	1.5x	541-3000	N/A	3.0x
541-2000	N/A	2.0x			

Magnification Test

It's easy to find your sight strength. Use the chart to your right to determine which lens strength you require when purchasing our Lightcrafters and/or Sidewinder Readers.

1. Hold this chart 26" away from your eyes without wearing glasses.
2. Read the lines across starting from the top line. Continue to read the next line and so on until the line becomes difficult to read.
3. To the right of that line is the diopter strength you need.

If this is difficult to read at 26"

Diopter
+3.00

If this is difficult to read at 26"

+2.50

If this is difficult to read at 26"

+2.00

If this is difficult to read at 26"

+1.50



- High-impact polycarbonate lens
- 99.9% UV protection
- Anti-fog coating on lens
- Scratch resistant coating
- Wrap-around design hugs the face
- Non-slip rubber nose piece and temples
- Meets ANSI Z87.1 – 2015



Purple Haze



Gold Frame

Poly Bag Item No.	Clamshell Item No.	Lens Color
542-0100	542-0110	Clear
542-0101	542-0111	Gray
542-0109	542-0119	Iridium*

Silver Frame

Poly Bag Item No.	Clamshell Item No.	Lens Color
542-0200	542-0210	Clear
542-0201	542-0211	Gray
542-0209	542-0219	Ice Blue*

Charcoal Frame

Poly Bag Item No.	Clamshell Item No.	Lens Color
542-0300	542-0310	Clear
542-0301	542-0311	Gray
542-0309	542-0319	Purple Haze*

*Anti-fog unavailable on iridium, ice blue and purple haze lenses

DB CARBON



- High-impact polycarbonate lens
- 99.9% UV protection
- Anti-fog coating on lens
- Scratch resistant coating
- Non-slip nose piece and temples
- Meets ANSI Z87.1 – 2015



Clear



Gray

Polybag

Item No.	Lens Color
543-3010	Clear
543-3011	Gray

Hornets™



- Impact polycarbonate lens
- 99.9% UV protection
- Anti-fog coating on lens
- Scratch resistant coating
- Molded-in sideshields
- Adjustable temples for excellent fit
- Meets ANSI Z87.1 – 2015



Clear



Poly Bag

Item No.	Frame Color	Lens Color
5267	Blue	Clear
5270	Black	Clear
5272	Red	Clear
5276	Black	Gray
5277	Red/White/Blue	Clear



GLOGGLES™

Switch from **GLASSES** to **GOGGLES** with a simple push, pull and snap!



- High-impact polycarbonate lens
- 99.9% UV protection
- Anti-fog coating on lens
- Scratch resistant coating
- Foam padding forms a snug fit
- Includes goggle strap and eyeglass temples for easy interchangeability
- Meets **ANSI** Z87.1 – 2015

**Poly Bag
Item No.**
5103
5103-01
5103-02

Lens Color
Clear
Gray
Yellow

Clear



Gray



Yellow



LED *Inspectors*™



- Ultra-bright built-in LED lights
- High-impact polycarbonate lens
- 99.9% UV protection
- Anti-fog and scratch resistant coating on lens
- Lights can be independently turned on or off
- Batteries included
- Meets ANSI Z87.1 – 2015



Clamshell
Item No. **Lens Color**
 5420-50 Clear

LED *CAMO*



- Adjustable ultra-bright built-in LED lights
- High-impact polycarbonate lens
- 99.9% UV protection
- Anti-fog and scratch resistant coating on lens
- Lights can be independently turned on or off
- Batteries included
- Non-slip temple arms
- Meets ANSI Z87.1 – 2015



Poly Bag
Item No. **Frame Color** **Lens Color**
 5421 Green Clear
 5422 Tan Clear



LIGHTCRAFTERS™

READERS



- 4 magnification strengths
- Adjustable ultra-bright built-in LED lights
- High-impact polycarbonate lens
- 99.9% UV Protection
- Anti-fog and scratch resistant coating on lens
- Lights can be independently turned on or off
- Batteries included
- Non-slip nose piece
- Meets ANSI Z87.1 – 2015



Poly Bag	Diopter	Poly Bag	Diopter
Item No.	Strength	Item No.	Strength
5420-15	1.5x	5420-25	2.5x
5420-20	2.0x	5420-30	3.0x

Magnification Test

It's easy to find your sight strength. Use the chart to your right to determine which lens strength you require when purchasing our Lightcrafters and/or Sidewinder Readers.

1. Hold this chart 26" away from your eyes without wearing glasses.
2. Read the lines across starting from the top line. Continue to read the next line and so on until the line becomes difficult to read.
3. To the right of that line is the diopter strength you need.

If this is difficult to read at 26" +3.00

If this is difficult to read at 26" +2.50

If this is difficult to read at 26" +2.00

If this is difficult to read at 26" +1.50

Classic Style



- Impact resistant polycarbonate lenses
- 99.9% UV protection
- Lightweight comfort
- Meets ANSI Z87.1 – 2015

Poly Bag
Item No. 5125 **Lens Color** Clear

Worker Bees



- Impact polycarbonate lens
- 99.9% UV protection
- Scratch resistant coating
- Ideal visitor specs
- Fits over most prescription glasses
- Meets ANSI Z87.1 – 2015

Poly Bag
Item No. 5120 **Lens Color** Clear

Visitor Specs



- Impact polycarbonate lens
- 99.9% UV protection
- Economical safety glasses for visitors
- Fits over most prescription glasses
- Meets ANSI Z87.1 – 2015

Poly Bag
Item No. 5210 **Lens Color** Clear

SAFETY GLASSES LENS COLOR GUIDE

What color of lens is the right one for you? Use this guide to help you choose. A rule of thumb is to use contrasting colors to decide what lens color meets your needs. For example; blue and yellow are contrasting colors, therefore a yellow light will absorb blue and ultraviolet lights and vice versa.

Clear Safety Glasses

Specifically designed for indoor protection where impact protection is required.

Gray Safety Glasses

Ideal for outdoor protection where light and glare can cause eye strain and fatigue. Gray lenses do not affect color recognition.

Indoor/Outdoor Safety Glasses

A clear lens with a slight mirror coating serves the same purpose as a gray lens, yet allows more visible light to pass through the lens making this lens ideal for indoor and outdoor use. This lens also reduces glare from artificial light.

Gold, Blue and Silver Mirror Safety Glasses

The “mirror” coating reflects and reduces the amount of light that passes through making these lenses ideal for outdoor where sunlight and glare cause eye strain and fatigue.

Yellow/Amber Safety Glasses

Ideal for creating maximum contrast, even in low light they block the blue portion of the visible light spectrum.

Filter Shades Safety Glasses

Ideal for protection against ultraviolet and infrared radiation; designed specifically for working with molten metal and welding operations.

Shade	Purpose
Shades 1.5 - 3	Torch Soldering
Shades 3 - 4	Torch Blazing
Shades 3 - 6	Cutting
Shades 4 - 8	Gas Welding
Shades 10 - 14	Electric Arc Welding



Clear Lens



Yellow Lens



Gray Lens



Indoor/Outdoor Lens

ZION X™



- High-impact polycarbonate lens
- 99.9% UV protection
- Anti-fog coating on lens
- Scratch resistant coating
- Indirect ventilated rubber seal
- Adjustable elastic fabric 1" head strap
- Meets ANSI Z87.1 – 2015

Poly Bag Item No.
 5104-01
 5104-02
 5104-03
 5104-04

Lens Color
 Clear
 Gray
 Yellow
 Mirror



Clear



Gray



Yellow



Mirror



Peel-Off Lens Covers Available



Deluxe Goggles



- Impact resistant polycarbonate lens
- 99.9% UV protection
- Anti-fog coating on lens
- Anti-splash: special vents prevent liquid from getting into eyes
- Sport-style design with 1.5" wide elastic headstrap
- Flexible PVC construction
- Meets ANSI Z87.1 – 2015

Clamshell

Item No.	Description
5106	Safety goggle
5106-10	Peel-off lens covers pack of 10

Overspray Goggles



- Impact resistant polycarbonate lens
- 99.9% UV protection
- Anti-fog coating on lens
- Anti-splash: special vents prevent liquid from getting into eyes
- Flexible PVC construction
- Meets ANSI Z87.1 – 2015

Clamshell

Item No.	Description
5110	Safety goggle
5111	Peel-off lens covers pack of 10



Chemical-Splash Goggles



- Impact resistant polycarbonate lens
- 99.9% UV protection
- Anti-splash: special vents prevent liquid from getting into eyes
- Flexible PVC construction
- Meets ANSI Z87.1 – 2015

Poly Bag

Item No.	Description
5109	Safety goggle



Standard Goggles



- Impact resistant polycarbonate lens
- 99.9% UV protection
- Flexible PVC construction
- Economical eye protection
- Meets ANSI Z87.1 – 2015

Poly Bag

Item No.	Description
5101	Safety goggle

Portable Emergency Eyewash Station

One of the top OSHA citations is lacking an emergency eyewash station. As required by law, protect employees and guard against personal injury claims.

- Compliance - ANSI Z358.1
- One-hand operation
- Gravity fed, no plumbing required
- Holds 15 gallons of water
- Provides a minimum 15-minutes flushing period
- Portable unit measures 11-1/2" x 19-1/2" x 25"
- Locking cap
- Mounting bracket, inspection tag and preservative included
- Change water every 90 days

Item No.	Description
SAS 5135	Eyewash station
SAS 5137	Eyewash inspection tag



Locking cap
(Lock is not included)



Preservative for Eyewash Station

- For use with eyewash station #5135
- Potable water preservative
- Add one bottle for each 15 gallons of water
- 8 oz. bottle

Item No.	Description
5136	Preservative for eyewash



SAS 5136

Personal Emergency Eyewash Station

- Dual-bottle eyewash station for temporary first-aid until injured individual can reach a larger unit
- Durable plastic station includes two 16 oz. bottles
- Bottles have twist-off tops with protective seal
- Directions printed on station for fast reference

Item No.	Description
5132	Eyewash station, dual-bottle
5130	Eyewash replacement bottle



SAS 5130



SAS 5132

Hearing Protection



Individual packaged for re-sale

Foam Ear Plugs



- Pre-shaped foam ear plugs
- Super-soft foam ear plugs conform to the inner ear canal
- Blister pack: 3 pair uncorded

Item No.	Description
6100	Dispenser box of plugs (200 pair)
6104	Blister pack (3 pair)



Foam Ear Plugs



- Pre-shaped foam ear plugs
- Super-soft foam ear plugs conform to the inner ear canal

Item No.	Description
6100-80	Clamshell (80 pair)



Individual packaged for re-sale

Corded Foam Ear Plugs



- Pre-shaped foam ear plugs
- Super-soft foam ear plugs conform to the inner ear canal
- Blister Pack: 1 pair corded and 1 pair uncorded with individual storage case

Item No.	Description
6101-B	Dispenser box of plugs (100 pair)
6101	Blister pack (2 pair)



Individual packaged for re-sale

Silicone Ear Plugs

- Pre-shaped silicone ear plugs
- Triple flange design helps create a secure fit to help block out sound



Item No.	Description
6109	Dispenser box of plugs (200 pair)



Individual packaged for re-sale

Corded Silicone Ear Plugs

- Pre-shaped corded silicone ear plugs
- Triple flange design helps create a secure fit to help block out sound
- Blister pack: 1 pair corded with storage case



Item No.	Description
6109-B	Dispenser box of plugs (100 pair)
6112	Blister pack (1 pair)



6103

Banded Ear Caps

- Lightweight
- Comfortable reusable banded caps
- Easy to put on and remove



Item No.	Description
6102	Banded ear caps
6103	Replacement caps (1 pair)

EP6 Ear Plugs



The EP6 ear plug features The Hocks noise Braker® filter. This filter uses the law of physics, incorporating the Accelerated Resonant Decay Principle that states energy is neither created nor destroyed but rather converted. The Hocks noise Braker® filter accomplishes this relationship through compression acceleration. Specifically for hearing protection, the filter reduces dangerous sound levels while maintaining hearing abilities for communication (tactical awareness). The ergonomic design and multi-flanged stem conforms to ear shape for maximum comfort and retention. Made from soft, hypoallergenic and medical-grade polymer.

- Ergonomic design and multi-flanged stem conforms to ear shape for maximum comfort and retention.
- Made from soft, hypoallergenic, medical-grade polymer
- Low profile design allows you to keep them in place while wearing a helmet, hat or on phone.
- EP6 ear-pieces are sold in a single left/right set.
- Each set is packaged in a convenient carrying case or polybag.



Clamshell		Poly bag	
Item No.	Description	Item No.	Description
6127	Medium	EP6M-01	Medium
6128	Large	EP6L-01	Large



Digital AM/FM Radio Earmuff

- Adjustable headband
- High quality audio
- Digital AM/FM radio with MP3/iPod compatible line-in jack
- Comfortable
- Flexible antenna

Item No.
6108



Foldable Earmuff

- Low-profile
- Lightweight muff-style
- Universal adjustment
- Foldable compact design allows easy storage

Item No.
6110



Professional Earmuff

- Superior protection
- Universal adjustment
- Comfortable muff-style
- Foldable compact design allows easy storage

Item No.
6111



Standard Earmuff

- Lightweight muff-style hearing protector
- Under-the-chin, over-the-head or behind-head wear

Item No.
6105

HEARING CONSERVATION

What is occupational noise exposure?

Noise, or unwanted sound, is one of the most pervasive occupational health problems. It is a by-product of many industrial processes. Sound consists of pressure changes in a medium (usually air), caused by vibration or turbulence. These pressure changes produce waves emanating away from the turbulent or vibrating source. Exposure to high levels of noise causes hearing loss and may cause other harmful health effects as well. The extent of damage depends primarily on the intensity of the noise and the duration of the exposure. Noise-induced hearing loss can be temporary or permanent. Temporary hearing loss results from short-term exposures to noise, with normal hearing returning after period of rest. Generally, prolonged exposure to high noise levels over a period of time gradually causes permanent damage.

OSHA's hearing conservation program is designed to protect workers with significant occupational noise exposures from hearing impairment even if they are subject to such noise exposures over their entire working lifetimes.

NOISE REDUCTION RATING INFO

NIOSH recommends using subject fit data based on ANSI S12.6-1997 [or most current edition] to estimate hearing protector noise attenuation. If subject fit data are not available, NIOSH recommends derating hearing protectors by a factor that corresponds to the available real-world data. Specifically, NIOSH recommends that the labeled NRRs be derated as follows:

Earmuffs - Subtract 25% from the manufacturer's labeled NRR

Formable ear plugs - Subtract 50% from the manufacturer's labeled NRR

All other ear plugs - Subtract 70% from the manufacturers labeled NRR

1. When the noise exposure level in dBC is known, the effective A-weighted noise level (ENL) is:

$$\text{ENL [dB(A)]} = \text{Workplace noise level in dBC} - \text{derated NRR}$$

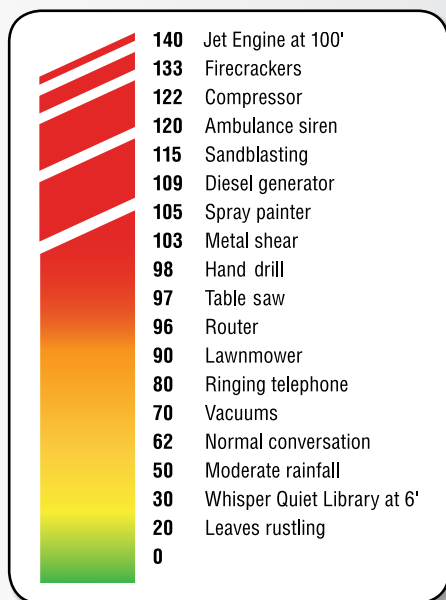
2. When the noise exposure level in dB(A) is known, the effective A-weighted noise level is:

$$\text{ENL} = \text{Workplace noise level in dB(A)} - (\text{derated NRR} - 7)$$

There are other single number ratings available. For details refer to the Canadian Standard CSA Z94.2. Another single number rating is based on (Subject Fit) Real Ear Attenuation measurements, known as Single Number Rating (Subject Fit 84th percentile) and abbreviated as SNR (SF 84) (for details see ANSI Standard S12.6). "SF 84" indicates that 84% of the users in a well run hearing conservation program are expected to receive at least that much protection.

SAS HEARING CHART

Use the guide below to determine what noise levels are both safe and dangerous to be around at your workplace:



160dB Immediate physical damage

130dB Immediate pain threshold

115dB Risk of hearing damage in 15 min

105dB Risk of hearing damage in 1 hour

95dB Risk of hearing damage in 4 hours

85dB Point at which hearing protection must be provided

50dB Comfortable sound

Protective Wear



Disposable Polypropylene Coveralls

- Lightweight polypropylene
- Full zipper front
- Elastic wrist and ankle closures

Crew Item No.	Hooded Bulk Item No.	Size
N/A	6862-01	Medium
6843	6863-01	Large
6844	6864-01	X-Large
6845	6865-01	3X-Large

Moonsuit Nylon / Cotton Coveralls

- Lightweight, durable rip-stop nylon front
- Breathable, cool cotton back
- Full pullover hood
- Hook-and-loop wrist and ankle closures
- Zipper front and elastic waist

Item No.	Size
6937	Medium
6938	Large
6939	X Large
6940	3X Large

GEN-NEX™

PROFESSIONAL GRADE Crew & Hooded Coveralls

Gen-Nex™ is a cost effective alternative that provides comfort, durability and protection.

For applications: automotive refinishing, general maintenance/operations, painting, janitorial and dirty areas.

Passes **ASTM F903** penetration testing for Isocyanate Based Paint.*

Cloth-Like Fiber

Full Zipper Front

Elastic Wrist Cuffs



Crew Coveralls

- Cloth-like fiber
- Full zipper front
- Elastic wrist & ankle cuffs

Item No.	Size
6851	Small
6852	Medium
6853	Large
6854	X-Large
6855	2X-Large
6856	3X-Large
6857	4X-Large
6858	5X-Large



Hooded Coveralls

- Cloth-like fiber
- Full pullover hood
- Full zipper front
- Elastic wrist & ankle cuffs

Item No.	Size
6892	Medium
6893	Large
6894	X-Large
6895	2X-Large
6896	3X-Large
6897	4X-Large
6898	5X-Large

Elastic Ankle Cuffs

* Test performed using U.S. Chemicals & Plastics 22 Fast Activator Glamour Clear



Individual packaged for re-sale

Painter's Spray Sock

- Comfortable cotton blend
- Snug fit around head and neck
- One-size-fits-most

Item No.	Qty
6810	Display Box (12 each)
6810-B	1 pack of 12



Individual packaged for re-sale

Deluxe Painter's Spray Sock

- No linting
- Super stretchy
- Lightweight and breathable Lycra™
- Snug fit around head and neck
- One-size-fits-most

Item No.	Qty
6910	Display Box (12 each)



Individual packaged for re-sale

Gen-Nex™ Chemical Hood

- Elastic face opening
- Covers shoulders
- Better protection against isocyanates
- Lint-free and static-free
- One-size-fits-most

Item No.	Qty
6806	Display Box (12 each)



PVC

PVC Shoe Covers

- Easy to slip over shoes
- Slip-resistant soles
- Machine washable
- Keeps shoes clean

Item No.	Description
6808	Medium
6809	Large



Polypropylene Shoe Covers

- Non-woven
- Elastic ankles for snug fit
- Keeps shoes clean

Item No.	Color	Description
6883-L	White	Large (300 ea. per box)
6883-10	Blue	Large (10 per pack)



15" PVC Boots

- High-quality PVC
- Lined for easy pull-on and removal
- Non-slip soles
- Non-steel toe
- Half sizes not available

Item No.	Size
7130-07	7
7130-08	8
7130-09	9
7130-10	10
7130-11	11
7130-12	12
7130-13	13



Lightweight PVC Rain Suit

- 3 Piece 0.08mm PVC construction
- Snap front jacket with zipper
- Jacket with detachable drawstring hood and corduroy collar for comfort
- Ventilated cape back
- Adjustable cuff and ankle snaps for better fit

Item No.	Size
6812	Medium
6813	Large
6814	X-Large

PVC Apron

- Excellent splash protection against most mild chemicals
- Adjustable neckstrap
- 100% waterproof
- Longer length extends coverage (35" W x 47" L)

Item No.	Size
6821	One-size-fits-most

Heavy-Duty PVC/Polyester Rain Suit

- 3 Piece 0.35mm PVC/polyester construction
- Ventilated cape back
- Storm front snap with zipper
- Jacket with detachable drawstring hood and corduroy collar for comfort
- Two flapped pockets
- Bib overall with adjustable suspenders
- Adjustable cuff and ankle snaps for better fit
- High-visibility safety color

Item No.	Size	Item No.	Size
6812-01	Medium	6815-01	2X-Large
6813-01	Large	6816-01	3X-Large
6814-01	X-Large	6817-01	4X-Large

Head and Face



Hard Hats

- Lightweight
- Superior fit and comfort
- Swivelling pivot head strap
- Adjustable pinlock or ratchet-style head strap
- 4 or 6-point nylon suspension

Complies with **ANSI Z89.1, Type 1 Class G, E and C**

CE EN 397:2009 certified

Available Colors



4-point pinlock

Item No.	Color
7160-01	White
7160-02	Yellow
7160-03	Red
7160-04	Blue
7160-05	Orange

6-point ratchet

Item No.	Color
7160-45	White
7160-46	Yellow
7160-47	Red
7160-48	Blue
7160-49	Orange
7160-52	Green



Full Brim Hard Hats

- Lightweight
- Reduces impact of falling objects
- Adjustable ratchet head strap
- 4-point nylon suspension

Complies with **ANSI Z89.1, Type 1 Class E**

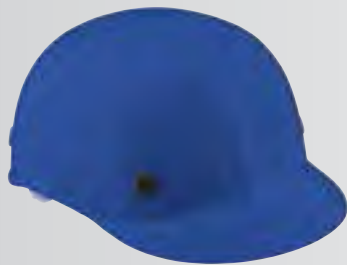
CE EN 397:2009 certified

Available Colors



Item No.

7160-10	White
7160-11	Yellow
7160-12	Blue
7160-13	Red
7160-14	Orange



Bump Caps

- Lightweight
- Ideal for use in areas with low head clearance
- Sewn-in sweatband
- 4-point adjustable pinlock suspension system

Available Colors



Item No.

Item No.	Color
7160-06	White
7160-07	Yellow
7160-08	Red
7160-09	Blue

Caution: Bump caps do not meet ANSI Z89.1

Ratchet Style



Pinlock Style



Hard Hat Styles

Swivelling pivot head strap



6-point ratchet suspension



4-point suspension



Deluxe Face Shield

- Impact-resistant polycarbonate shield for long lasting protection
- Aspherical lens design provides larger area to protect your face
- Push and turn ratchet-sizing adjustment
- Tension dials increase and decrease tension of shield placement
- Large spark deflection
- Closer curved fit for comfort and greater range of motion

Meets **ANSI Z87.1-2015**

Item No.	Description	Color
5145	Face shield	Clear
5147	Face shield	Green*
5155	Replacement shield	Clear
5157	Replacement shield	Green*

* Not for welding



Standard Face Shield

- Impact-resistant polycarbonate shield for long lasting protection
- Curved design protects a larger area of your face without distortion
- Push and turn ratchet-sizing adjustment
- Easy dial adjustment for individual visor positioning
- Suitable for general grinding applications
- Large spark deflection

Meets **ANSI Z87.1-2015**

Item No.	Description	Color
5140	Face shield	Clear
5142	Face shield	Green*
5150	Replacement shield	Clear
5152	Replacement shield	Green*

* Not for welding



Item No. **5145-20**

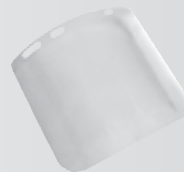
Hard Hat Accessories



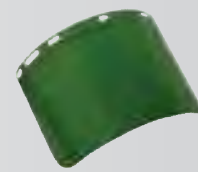
7160-73



Aluminum Bracket



Clear face shield



Green face shield*



Steel mesh face shield

Earmuff/face shield combo

- Attachable earmuffs
- 3 attachable face shields: clear lens, green lens and steel mesh
- Replaceable interchangeable suspensions

Combination Item No.	Description
7160-73	Earmuff/steel wire mesh face shield combo with attachment hardware

Earmuff Item No.	Description
7160-70	Earmuffs (NRR 22) with attachment hardware

Face Shields Item No.	Description
5150	Clear lens shield
5152	Green lens shield*
7160-83	Steel wire mesh face shield with attachment hardware

Aluminum Bracket Item No.	Description
7160-91	Universal hard hat bracket for face shields

*Meets **ANSI Z87.1-2015**

Hard hat accessories available for:

SAS 7160-01 thru 05
SAS 7160-45 thru 52



Back Support

- Made of lightweight, cool, washable polyester
- Four plastic stays for flexible, contoured support
- Tapered design allows a full range of body motion while maintaining proper support
- Two sets of dual elastic stretch-bands for maximum, adjustable support

Item No.	Size
7161	Small (28" to 32")
7162	Medium (32" to 38")
7163	Large (38" to 47")
7164	X-Large (46" to 56")
7165	2X-Large (54" to 58")



Deluxe Hi-Vis Back Support

- Bright orange and yellow design allows for extra visibility
- Made of lightweight, cool, washable polyester
- Four plastic stays for flexible, contoured support
- Tapered design promotes better movement for proper back support
- Two sets of dual elastic stretch-bands for maximum, adjustable support

Item No.	Size
7261	Small (28" to 32")
7262	Medium (32" to 38")
7263	Large (38" to 47")
7264	X-Large (46" to 56")
7265	2X-Large (54" to 58")



Deluxe Gel Knee Pads

- Super-thick 1/2" high density closed-cell foam
- Large, low-profile cap designed to prevent "roll over"
- Anti-compression air injected gel
- Easy-to-use hook and loop closures

Item No.
7105



Deluxe Knee Pads

- Plastic cap over tough nylon fabric with soft foam rubber core
- Water and abrasion resistant
- Hook-and-loop closures
- Easy-to-use

Item No.
7102



Kneeling Pad

- Durable lightweight EVA foam
- Comfortable, easy-to-use
- Excellent for periodic kneeling
- Built-in handle for easy carrying
- 16" x 6.25" x .75"

Item No.
7100



E-Z Kneez Knee Pads

- Closed-cell foam padding for all-day cushion and comfort
- Wide straps with hook-and-loop closures for secure fit
- Non-marring surface material

Item No.
7104

WHY WORKPLACE SAFETY IS IMPORTANT

Money Saved With Solid Workplace Safety

A small investment in safety equipment and changes along with development of an internal safety policy, increases profitably and productivity while keeping your employees safe.

A 2012 study by California's Division of Occupational Safety and Health (Cal/OSHA) indicated a 9.4% reduction in injury claims and a 26% average savings on workers' compensation costs in the four years following a Cal/OSHA inspection compared to a similar group of uninspected workplaces. On average, inspected firms saved an estimated \$355,000 in injury claims and compensation paid for work lost over those four years.

We can save the DIY'er a trip to the emergency room

One in five do-it-yourselfers will require medical attention this year. According to Consumer Reports, lawn mower-related injuries alone treated in hospital emergency rooms totaled 86,000 in 2009. Falling off ladders, working with paints and chemicals, gardening and power tools were the four top safety culprits among DIY'ers. According to the Monash University Accident Research Centre, power tools such as grinders, polishers and buffers account for one-fifth of all injuries.

Preventable accidents occur because most novice DIY'ers and hobbyists tend to solely focus on the task at hand, underestimate the amount of safety equipment needed for a particular project and fail to recognize potential hazards altogether. A small amount of education on safety while performing household chores and weekend projects can save you medical costs, hours spent in the emergency room and time out of work.

HEAD PROTECTION TERMS YOU SHOULD KNOW

Bump caps - Offer light protection but DO NOT protect against impact or blows to the top or side of the head. They do not meet ANSI specifications.

Cap style hard hats - Type of hard hat characterized by a bill in the front. Most hard hats use this design. The design looks very similar to a baseball cap.

Full brim hard hats - Type of hard hat with a brim that wraps completely around the hat. This helps to cover the neck and ears from the sun and other elements.

Pin-lock suspension - A type of suspension that attaches to the users head with a pin locking mechanism, rather like a belt. This is the most economical of the suspensions. At this time, all hard hats come with either this suspension or the ratchet suspension below.

Ratchet suspension - A type of suspension with a quick ratchet adjusting knob. This loosens or tightens the hard hat "on the go" with a simple turn of the knob. The pin lock suspension must be removed to be adjusted.

Four point/six point suspension - This is the actual number of clips that mounts the cradle suspension to the shell of the hard hat.

Polyethylene plastic - Most hard hats are designed with this hard plastic shell. Hard hats are also available in a fiberglass shell.

Type I hard hats - Intended to reduce the force of impact resulting from a blow to the top of the head.

Type II hard hats - Designed to provide protection against both side impact and blows to the top of the head. Locations in your workplace requiring Type II protection will be determined by your Safety Management.

First Aid

According to OSHA, “it is a requirement that employees be given a safe and healthy workplace that is reasonably free of occupational hazards. Employers are required to provide medical and first aid personnel and supplies commensurate with the hazards of the workplace.” In addition to having a first aid kit onsite, OSHA recommends “a first aid program that is part of a comprehensive safety and health management system that includes essential elements; management leadership and employee involvement, worksite analysis, hazard prevention and control and safety and health training.”



Single Person First Aid Kit

- Lightweight and compact
- Contains essential supplies for light injuries
- Fits easily into a toolbox, athletic bag or glove compartment

Item No.	Description
6001	Plastic Case 3.9" x 1.1" x 5.31"



10-Person First Aid Kit

- Multi-functional kit designed for a workplace with up to 10 employees
- Contains essential supplies to treat light injuries
- Wall mount hardware included
- Meets ANSI Z308.1 - 2009

Item No.	Description
6010	Plastic Case 7" x 2.7" x 7"
6010-01	Metal Case 4.3" x 2.55" x 7.4"



25-Person First Aid Kit

- Multi-functional kit designed for a workplace with up to 25 employees
- Contains essential supplies to treat medium to light injuries
- Wall mount hardware included
- Meets ANSI Z308.1 - 2009

Item No.	Description
6025W	Plastic Case (White) 6.69" x 2.75" x 9.44"



25-Person First Aid Kit

- Multi-functional kit designed for a workplace with up to 25 employees
- Contains essential supplies to treat medium to light injuries
- Wall mount hardware included
- Meets ANSI Z308.1 - 2009

Item No.	Description
6025	Plastic Case 9" x 3.3" x 10.03"
6025-01	Metal Case 7.08" x 2.55" x 10.43"



35-Person First Aid Kit

- Deluxe kit designed for a workplace with up to 35 employees
- Contains essential supplies to treat medium to light injuries
- Wall mount hardware included
- Meets ANSI Z308.1 - 2009

Item No.	Description
6035	Plastic Case 9.05" x 3.34" x 9.84"



50-Person First Aid Kit

- Comprehensive kit designed for a workplace with up to 50 employees
- Contains essential supplies to treat medium to small injuries
- Wall mount hardware included
- Meets ANSI Z308.1 - 2009

Item No.	Description
6050	Plastic Case 10.8" x 2.55" x 10.8"
6050-01	Metal Case 10.43" x 3.7" x 11.22"



100-Person First Aid Kit

- Comprehensive kit designed for a workplace with up to 100 employees
- Contains an assortment of supplies to treat small to large injuries
- Includes dressings, antiseptics, burn treatment products and personal protective devices
- Wall mount hardware included
- Meets ANSI Z308.1 - 2009

Item No.	Description
6099-01	Metal Case 10.43" x 4.7" x 14.7"

First Aid Kit Contents

Description	6001	6010	6010-01	6025W	6025	6025-01	6035	6050	6050-01	6099-01
	1 person	10 person	10 person	25 person	25 person	25 person	35 person	50 person	50 person	100 person
Case	Plastic	Plastic	Metal	Plastic	Plastic	Metal	Plastic	Plastic	Metal	Metal
Adhesive Strip 3/4" x 3"	10	16	20	30	20	30	30	30	30	100
Adhesive Strip 1" x 3"			20	30	20	30	30	50	50	100
Adhesive Strip 1 1/2" x 1 1/2"	10			20		20	30	20	20	
Adhesive Tape 1/2" x 5 yds.		1	1	1	1	1	1	2	2	
Adhesive Tape 1" x 5 yds.										2
Antiseptic Spray Can 3 oz.										1
Antiseptic Wipes		10	10	10	20	10	20	20	20	10
Alcohol Wipes	3	5	10	10	10	10	10	30	30	100
Burn Cream 1/8 oz.	2	6	6	6	6	6	6	10	10	10
Burn Spray Can 3 oz.										1
Butterfly Closure	1	2	2	2	2	2	3	3	3	
Cotton Tip Applicators	10	10	10	20	10	20	20	20	20	100
CPR Face Shield				1	1	1	1	1	1	1
Disposable Respirator				1		1	1	1	1	
Elastic Bandage 2"							1	1		
Elastic Bandage 4"										1
Emergency Blanket								1	1	
Eye Pad				1		1	1	1	1	
Eyewash 1/2 oz.				2		2			2	
Eyewash 4 oz.										1
Fabric Knuckle				3		3	3	3	3	10
Fabric Fingertip		2	2	3	2	3	3	3	3	10
First Aid Guide		1	1	1	1	1	1	1	1	1
Ice Pack				1		1	1	1	1	2
Gauze 2" x 2"	2	4	4	4	4	4	4	4	4	
Gauze 3" x 3"		4	4	4	4	4	4	4	4	10
Gauze 4" x 4"		2	2	4	2	4	4	4	4	
Gauze Bandage 2"										1
Gauze Bandage 4"										1
Gauze Roll 3"		1	1	1	1	1	2	2	2	1
Nitrile Gloves (1 pair)		2	2	2	2	2	2	2	2	2
Pad 5" x 9"		1	1	1	1	1	1	1	1	2
Pain Reliever										100
Plastic Eyecup										1
Scissors										1
Splint/Tongue Depressor			4	4	4	4	4	4	4	
Splinter Probe		5	5		5		5			
Sting Relief					10		6	10	10	
Triangular Bandage		1	1	1	1	1	1	1	1	2
Triple Antibiotic		6	6	12	6	12	6	6	6	10
Tweezers		1	1	1	1	1	1	1	1	1
Total Pieces (including case)	39	81	114	177	135	177	203	238	238	583



SORB-A-SPILL® Absorbent

- Perfect absorbent for paint, solvent and oil spills
- Non-toxic, non-corrosive, non-hazardous absorbent is perfect for driveways, shop floors or home use
- This lightweight absorbent provides 5 times greater absorbency than similar clay products
- Weighs 80% less – so transportation and disposal costs are significantly reduced

Item No.	Description
7702	10 lb bag (4.5kg)



Emergency Response Spill Kit

A spill kit is required under federal law CFR 1910.00-1919.180, Subtitle HM-126.F. It is perfect for use in the field and is a necessity for all utility vehicles. Packaged in an easy-carry box.

- Absorbs oil, paint or chemical spills on land
- Absorbs over 4 gallons of waste
- Fits behind truck seats

Item No.	Description
7750	Emergency response spill kit

Kit Contents:

(15 each)	Absorbent pads, P/N 7710
(3 each)	Absorbent boom socks, P/N 7740
(1 pair)	Chemical-splash goggles, P/N 5109
(1 pair)	Nitrile chemical gloves, P/N 6533
(2 each)	All-purpose waste disposal bags, P/N 7760



Spill Control Boom Socks

- Universal sorbent boom socks absorb oil and chemical spills
- Place anywhere you need to stop spills
- Flexible to mold around corners

Item No.	Qty
7740	Pack of 12



Drum Top Pad

- Pad helps eliminate messy drips and overflow when mixing or pumping liquids in drums
- Drum top cover is easy to install
- Pre-cut holes to help fit evenly over the top of a 55-gallon drum
- Highly absorbent polypropylene cover will absorb oil and chemicals

Item No.	Qty
7730	Pack of 25



Absorbent Oil Pads

- Absorbs up to 25 times its own weight in petroleum product
- Easily installed and removed with no shoveling or sweeping
- Unaffected by temperature changes
- Will not rot or mildew
- Use for cleanup and removal of oil around mechanical equipment
- Use for minor spills or for final cleanup of large spills
- Absorbs oil, coolant, hydraulic fluid, diesel fuels, gasoline, isopropanol, kerosene, nitric acid and MEK
- Great for walkways and open areas to catch leaks, drips and overspray

Item No.	Description
7710	Non-aqueous pads, 16" x 20" box of 100
7712	Universal pads 16" x 20" box of 100



7710

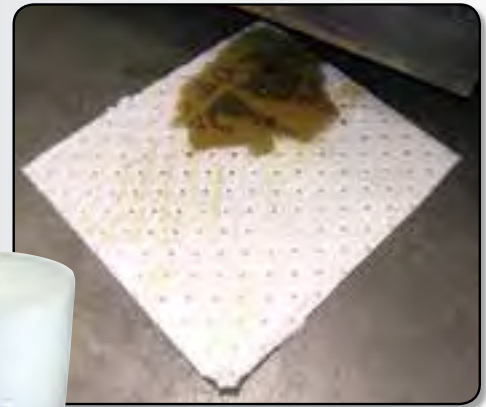


7712

Absorbent Roll

- Cost-effective
- Perforated for easy tear off (perforated length 20")
- Absorbs non-aqueous liquids, solvent-based paints and vegetable oils
- Absorbs up to 25 times its own weight in petroleum products
- Easily installed and removed with no shoveling or sweeping
- Unaffected by temperature changes
- Will not rot or mildew
- Use for cleanup and removal of oil around mechanical equipment
- Use for minor spills or for final cleanup of large spills
- Absorbs oil, coolant, hydraulic fluid, diesel fuels, gasoline, isopropanol, kerosene, nitric acid and MEK
- Great for walkways and open areas to catch leaks, drips and overspray

Item No.	Description
7720	1 roll, size 16" x 168"



Absorption Chart

Item No.	Description	Total Oil Absorption	Total Water Absorption	Oil Absorption per piece	Water Absorption per piece
7702	Sorb-A-Spill absorbent	110 - 220 gal	3.83 - 11.5 gal	6.87 - 13.75 gal/lb	0.24 - 0.72 gal/lb
7710	Absorbent oil pads	15.85 gal	N/A	0.16 gal	N/A
7712	Universal absorbent pads	25.36 gal	25.36 gal	0.25 gal	0.25 gal
7720	Absorbent roll	15.85 gal	N/A	15.85 gal/roll	N/A
7730	Drum top absorbent pads	6.6 gal	N/A	0.26 gal	N/A
7740	Spill control boom socks	16.64 gal	N/A	1.39 gal	N/A



Item No. 9900-01



Brackets for gondola

Sign Display Kit

- Sign display wire rack
- Includes assortment of 11 signs (10 packs of each)
- Durable cream finish wire rack
- 7 pockets
- Includes bracket for gondola
- Measures 14.5" x 3' 7.5" x 3"

Item No. 9900-01



Signs

- 14" x 10" plastic
- Large bold print
- Pre-punched holes with rounded corners

Item No.	Description
9940	For Sale
9941	For Rent
9944	Vehicle for Sale
9946	Yard Sale
9948	No Smoking
9949	No Trespassing
9950	Beware of Dog
9951	Customer Parking
9952	No Parking
9953	Keep Out
9954	Exit





Hazard Communication Program Kit

- Kit includes the necessary forms and procedures to meet OSHA requirements
- Simple-to-understand, fill-in-the-blank type program makes compliance easy
- Meets HCS 2015 Standard

Item No.
6000-25

SDS Compliance Center

- High-visibility
- Provides convenient storage
- Instant point of reference when working with potentially dangerous substances
- Mount on walls in warehouses, factories, storage rooms or anywhere hazardous chemicals are used or stored
- Meets HCS 2015 Standard

Item No.	Description
6000-75	SDS compliance center
6000-70	Binder

Hazard Communication continues to be one of the top ten OSHA violations in workplaces. With over 5,000 citations in 2015, lack of Hazard Communication is increasing annually, which puts employees at risk. Complying with Hazard Communication means addressing the chemical hazards, both produced in the workplace and those brought into the workplace.

The SDS Compliance Center meets the updated Hazard Communication Standard (HCS) 2015. It provides a convenient storage for quick reference of safety data sheets and other safety documents where hazardous materials are present. Place on walls in warehouses, factories, storage rooms or where chemicals are used and or stored.

Retail Displays Available!

We offer merchandising solutions for eyewear, footwear and PPE safety centers. To inquire more information, please contact our Sales Department at 1 (800) 262-0200.



Index

031-1115 to 031-3115	31	541-0000 to 541-0006	66	66511 to 66512	3	692-2218 to 692-2223	50
031-1215 to 031-3215	31	541-0010 to 541-0016	66	66511-CS to 66512-CS	3	692-2408 to 692-2412	55
1400-96 to 1400-97	44	541-1000 to 541-3000	66	66516 to 66520	3	6937 to 6940	78
1400-95	45	542-0100 to 542-0109	67	6652 to 6655	21	7100	84
2001-00 to 2001-01	42	542-0110 to 542-0119	67	66541 to 66545	10	7102	84
2001-04 to 2001-07	42	542-015 to 5420-30	70	66561 to 66564	10	7104	84
2001-20	42	542-0200 to 542-0209	67	66572 to 66575	6	7105	84
2001-50	42	542-0210 to 542-0219	67	6662 to 6665	21	7130-07 to 7130-13	80
2001-95	42	542-0300 to 542-0309	67	6672 to 6675	21	7160-01 to 7160-05	82
2985 to 2986	35	542-0310 to 542-0319	67	6701	23	7160-06 to 7160-09	82
300-1001	34	5420-50	70	670-6519	22	7160-10 to 7160-14	82
300-1050	34	543-3010 to 543-0311	67	670-6526 to 670-6528	22	7160-45 to 7160-52	82
300-1060	34	5510-01 to 5510-04	59	670-6529	22	7160-70	83
300-1061	34	5510-11 to 5510-12	59	670-6563	23	7160-73	83
300-1070	34	5511-01 to 5511-04	60	670-6637 to 670-6639	14	7160-83	83
300-1071	34	5512-01 to 5512-04	60	6712 to 6715	19	7160-91	83
300-1080	34	5550-01 to 5550-03	59	6720-02 to 6720-05	17	7161 to 7165	84
300-1081	34	6000-25	92	6720-22 to 6720-25	17	7261 to 7265	84
300-1085	34	6000-70 to 6000-75	92	6721-02 to 6721-05	18	7500-12 to 7500-28	56
300-1090	34	6001	86	6721-22 to 6721-25	18	7501-18 to 7501-28	56
300-1091	34	6010 to 6101-01	86	6722-02 to 6722-05	18	7600-95 to 7600-96	45
300-1717	44	6025 to 6025-01	87	6722-22 to 6722-25	18	7702	89
300-3525	44	6025W	86	6724-02 to 6724-05	18	7710 to 7712	90
311-1017 to 311-3017	28, 29	6035	87	6724-22 to 6724-25	18	7720	90
311-1115 to 311-3115	28	6050 to 6050-01	87	6762 to 6765	20	7730	89
311-1215 to 311-3215	28	6099-01	87	6771-02 to 6771-05	12	7740	89
311-1300 to 311-3300	29	6100	74	6772-02 to 6772-05	13	7750	89
312-1017 to 312-3017	30	6100-80	74	6772-12 to 6772-15	13	8610 to 8610-50	35
312-1215 to 312-3215	30	6101 to 6101-B	74	6773-02 to 6773-05	13	8611 to 8611-50	35
321-1017 to 321-3017	27	6102 to 6103	75	6773-12 to 6773-15	13	8620 to 8621	37
321-1215 to 321-3215	27	6104	74	6775-02 to 6775-05	13	8641	37
3800-30	41	6105	76	6776-02 to 6776-05	13	8661-22	34
3800-32	41	6108	76	6806	80	8661-92 to 8661-93	33
5101	72	6109 to 6109-B	75	6808 to 6809	80	8671-28	34
5103 to 5103-02	69	6110	76	6810 to 6810-B	80	8671-92 to 8671-93	33
5104-01 to 5104-04	72	6111	76	6812 to 6814	81	8710 to 8712-50	36
5106	72	6112	75	6812-01 to 6817-01	81	9401-01 to 9401-05	44
5106-10	45	6127 to 6128	75	6821	81	9401-18	44
5109	72	6312 to 6315	20	6823	51	9650-00	38
5110	72	6342 to 6345	19	6843 to 6845	78	9650-25	45
5111	45	6352 to 6354	21	6851 to 6858	79	9700-01	45
5120	71	6362 to 6365	56	6862-01 to 6865-01	78	9700-02	45
5125	71	640-1008 to 640-1011	14	6883-10	80	9700-10	45
5130 to 5132	73	640-1012 to 640-1015	14	6883-L	80	9700-14	45
5135 to 5137	73	640-1022 to 640-1025	14	6892 to 6898	79	9700-25 to 9700-30	43
5140 to 5142	83	640-1907 to 640-1911	14	690-1108 to 690-1114	49	9700-40	45
5145 to 5147	83	641-1010	14	690-1208 to 690-1213	50	9700-49	45
5150 to 5152	83	6417 to 6420	24	690-1308 to 690-1312	51	9700-50	45
5155 to 5157	83	6465	24	690-1408 to 690-1414	52	9700-52 to 9700-54	45
5210	71	6467 to 6470	24	690-1508 to 690-1514	52	9800-18	40
5241 to 5422	70	6477 to 6480	24	690-1518 to 690-1524	53	9800-19	39
5267 to 5277	67	650-1001 to 650-1005	5	690-1608 to 690-1611	52	9800-22	41
5330 to 5334	61	650-3003 to 650-3004	5	690-1658 to 690-1664	52	9800-25	40
5330-01 to 5331-01	61	650-3003CS to 650-3004CS	5	690-1708 to 690-1710	49	9800-32	40
5340 to 5346	62	6501-20 to 6504-20	9	690-1711	56	9800-35	39
5340-50 to 5345-50	62	6501-40 to 6505-40	9	690-1714	56	9805-00 to 9806-00	43
5347-00	62	6506-20 to 6509-20	11	690-1715	56	9806-02	45
540-0000 to 540-0003	65	6519	22	690-1908 to 690-1914	53	9806-10	45
540-0010 to 540-0013	65	6526 to 6528	22	690-2108 to 690-2114	49	9810-00	43
540-0100 to 540-0103	65	6529	22	690-2208 to 690-2212	50	9810-02	39
540-0110 to 540-0113	65	6532 to 6534	15	690-2218 to 690-2263	50	9813-20	39
540-0200 to 540-0205	65	6552 to 6554	15	690-2308 to 690-2311	53	9813-21	45
540-0210 to 540-0215	65	6557 to 6559	15	6910	80	9813-70 to 9813-71	39
540-0300 to 540-0303	65	6563	23	692-1108 to 692-1114	49	9814-04 to 9814-06	38
540-0310 to 540-0313	65	6565	23	692-1208 to 692-1213	50	9816-00	38
540-0400 to 540-0403	63	6566	23	692-1408 to 692-1414	52	9818-20	45
540-0410 to 540-0413	63	6588	15	692-1508 to 692-1514	52	9820-00	43
540-0500 to 540-0509	63	6591 to 6594-20	9	692-1608 to 692-1611	52	9840-25 to 9840-30	43
540-0510 to 540-0519	63	6602 to 6605-20	4	692-1658 to 692-1664	52	9852-32	43
540-0600 to 540-0605	63	6603-22 to 6604-22	4	692-1708 to 692-1710	49	9852-40 to 9852-44	43
540-0610 to 540-0615	63	6606 to 6610	8	692-1711	56	9900-01	91
540-0700 to 540-0703	63	6606-20 to 6609-20	8	692-1714	56	9940 to 9954	91
540-0710 to 540-0713	63	6606-40 to 6610-40	8	692-1715	56	9960	56
540-0809 to 540-0909	63	6632 to 6635	21	692-2108 to 692-2114	49	EP6M-01 to EP6L-01	75
540-0819 to 540-0919	63	6637 to 6639	14	692-2208 to 692-2213	50		



3031 Gardenia Avenue
Long Beach, CA 90807
Tel (800) 262-0200
Fax (800) 244-1938

ISO 9001 Certified www.sassafety.com

Copyright © 2015 SAS Safety Corp. All rights reserved.

CAT2016 \$3.00 USD